



Interoffice Memorandum

APPROVED BY ORANGE
COUNTY BOARD OF COUNTY
COMMISSIONERS

March 11, 2015

BCC Mtg. Date: Apr. 5, 2016

TO: Mayor Teresa Jacobs
and Board of County Commissioners

FROM: Mark V. Massaro, P. E., Director, Public Works Department

CONTACT PERSON: Ruby Dempsey Rozier, Manager
Traffic Engineering Division

PHONE NUMBER: (407) 836-7890

SUBJ: **Installation of a "No Trucks" sign on eastbound Pine Street west of Orange Avenue, installation of a "Right-Turn Only" sign on eastbound Pine Street west of Orange Avenue, and installation of a "No Thru Traffic" sign on westbound Pine Street east of Orange Avenue**

The Federal Railroad Administration has determined that the future Sun Rail crossing on Pine Street in Taft could present a safety problem for trucks traveling eastbound on Pine Street. Trucks that are longer than the space between the Orange Avenue and the railroad tracks may leave their bumpers hanging over the tracks.

To improve safety at this railroad crossing, the Federal Railroad Administration and Traffic Engineering staff recommend the installation of a "No Trucks" sign on eastbound Pine Street west of Orange Avenue approaching the railroad crossing, installation of a "Right-Turn Only" sign on eastbound Pine Street west of Orange Avenue, and installation of a "No Thru Traffic" sign on westbound Pine Street east of Orange Avenue.

Staff recommends that the Board approve the recommendation of the Federal Railroad Administration.

Action Requested: Approval to install a "No Trucks" sign on eastbound Pine Street west of Orange Avenue approaching the railroad crossing, installation of a "Right-Turn Only" sign on eastbound Pine Street west of Orange Avenue, and installation of a "No Thru Traffic" sign on westbound Pine Street east of Orange Avenue. District 4.

MVM/RDR/AHW/ns

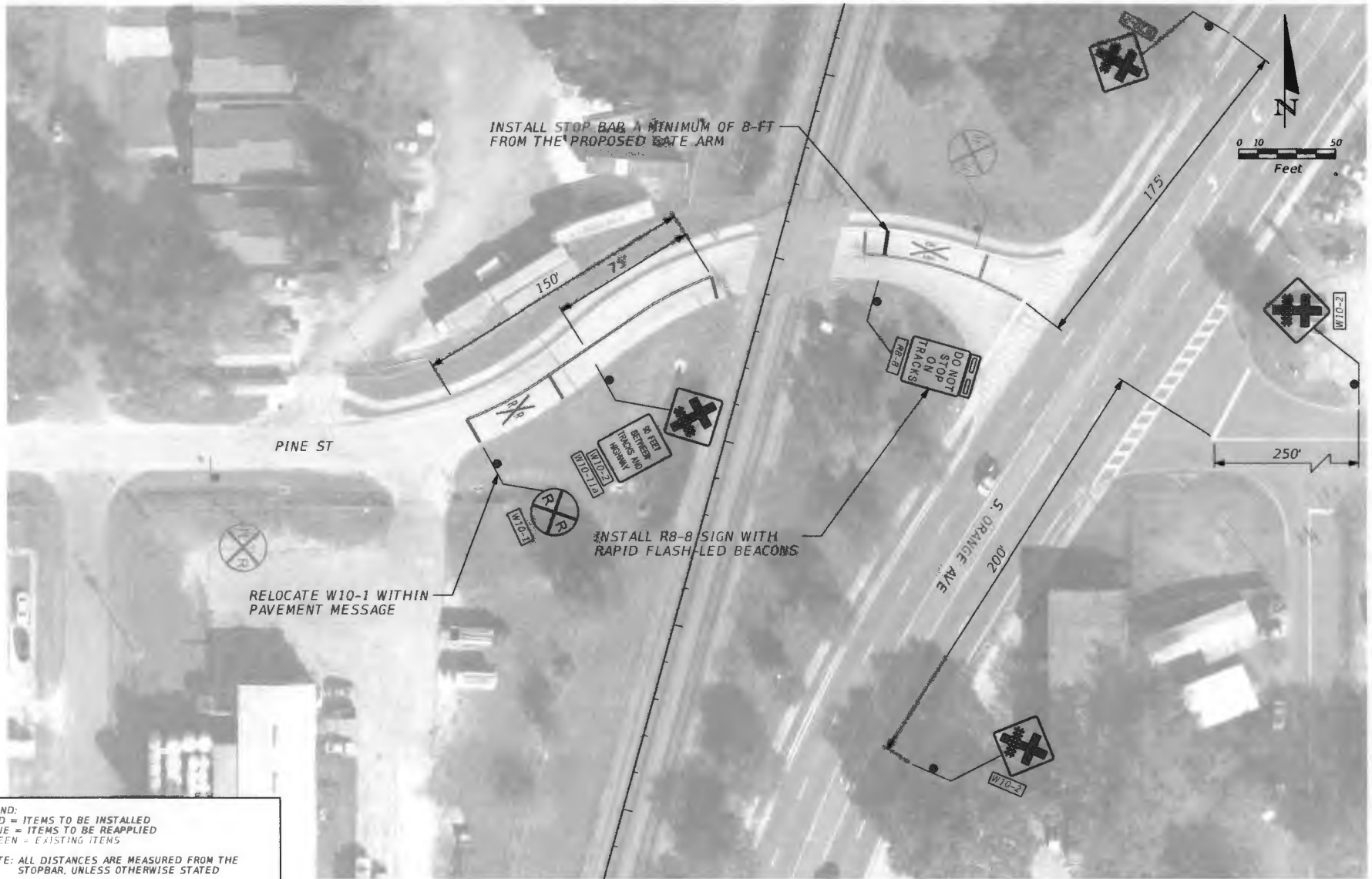
Attachments



Pine Street Sun Rail Crossing In Taft



MODEL: 04/06/02
 SHEET SIZE: 24" X 36"
 DATE: 05/20/2015



LEGEND:
 RED = ITEMS TO BE INSTALLED
 BLUE = ITEMS TO BE REAPPLIED
 GREEN = EXISTING ITEMS

NOTE: ALL DISTANCES ARE MEASURED FROM THE STOPBAR, UNLESS OTHERWISE STATED

CROSSING NAME		STATE OF FLORIDA DEPARTMENT OF TRANSPORTATION		SUNRAIL PHASE II SAPM	SHEET NO. 2
PINE STREET MP 797.94 622337W		ROAD NO.	FINANCIAL PROJECT ID		
		COUNTY			

PRINT DRIVER: 04/20/15
 PLOT FILE: 04/20/15