




Interoffice Memorandum


APPROVED BY ORANGE
COUNTY BOARD OF COUNTY
COMMISSIONERS

March 11, 2016

BCC Mtg. Date: Apr. 5, 2016

TO: Mayor Teresa Jacobs
and Board of County Commissioners

FROM: Mark V. Massaro, P.E., Director, Public Works Department 

CONTACT PERSON: Ruby Dempsey Rozier, Manager
Traffic Engineering 

PHONE NUMBER: (407) 836-7890

SUBJ: **Installation of Traffic Control Devices and "No Parking" signs in Ashlin Park Phase 1**

Our staff recommends that the following traffic control devices be installed in Ashlin Park Phase 1:

Install "STOP" signs on:

Calm Cove Court at Ashlin Park Boulevard
Ashlin Park Boulevard at Winter Garden Vineland Road
Serenity Bend at Ashlin Park Boulevard
Sprawling Oak Drive at Ashlin Park Boulevard
Rambling Water Way at Sprawling Oak Drive
Rambling Water Way at Ashlin Park Boulevard

The Fire Marshal recommends that the following "No Parking" signs be installed in Ashlin Park Phase 1:

Install "NO PARKING" signs on:

Calm Cove Court
Ashlin Park Boulevard
Serenity Bend
Rambling Water Way
Sprawling Oak Drive

Action Requested: Approval of Traffic Control Devices and "No Parking" sign installations in Ashlin Park Phase 1. District 1.

MVM/RDR/AHW
Attachments

ASHLIN PARK PHASE 1
 LYING IN SECTION 25, TOWNSHIP 23 SOUTH, RANGE 27 EAST,
 ORANGE COUNTY, FLORIDA
 DISTRICT # 1

STOP/STREET

<u>(1)</u>	(Ft N)	on Calm Cove Court at Ashlin Park Boulevard	7100 11500
<u>(2)</u>	(Ft W)	on Ashlin Park Boulevard (9 inch) at Winter Garden Vineland Road (9 inch)	11400 7500
<u>(3)</u>	(Ft S)	on Serenity Bend at Ashlin Park Boulevard	7200 11600
<u>(4)</u>	(Ft N)	on Sprawling Oak Drive at Ashlin Park Boulevard	11600 11500
<u>(5)</u>	(Ft S)	on Rambling Water Way at Sprawling Oak Drive	7200 11700
<u>(6)</u>	(Ft N)	on Rambling Water Way at Ashlin Park Boulevard	7300 11600

SPEED LIMIT 25 MPH

<u>(7)</u>	(Ft W)	on Ashlin Park Boulevard at Winter Garden Vineland Road
-------------------	---------------	--

KEEP RIGHT

<u>(8)</u>	(FtW)	on Ashlin Park Boulevard (WB) at Winter Garden Vineland Road
<u>(9)</u>	(FtW)	on Ashlin Park Boulevard (EB) at Winter Garden Vineland Road

END OF ROAD TREATMENT

<u>(10)</u>	(FtS)	on Serenity Bend at Ashlin Park Boulevard
<u>(11)</u>	(FtW)	on Ashlin Park Boulevard at Rambling Water Way

(12) (FtW) on Sprawling Oak Drive
at Rambling Water Way

NO PARKING with arrows

(13) on Calm Cove Court from Ashlin Park Boulevard extending
north to the cul-de-sac on the east side

(14) on Ashlin Park Boulevard from Winter Garden Vineland Road
extending 1860ft west on the north side

(15) on Serenity Bend from Ashlin Park Boulevard extending 120ft
south on the east side

(16) on Rambling Water Way from Ashlin Park Boulevard extending
north to Sprawling Oak Drive on the west side

(17) on Sprawling Oak Drive from Ashlin Park Boulevard extending
950ft west on the north side

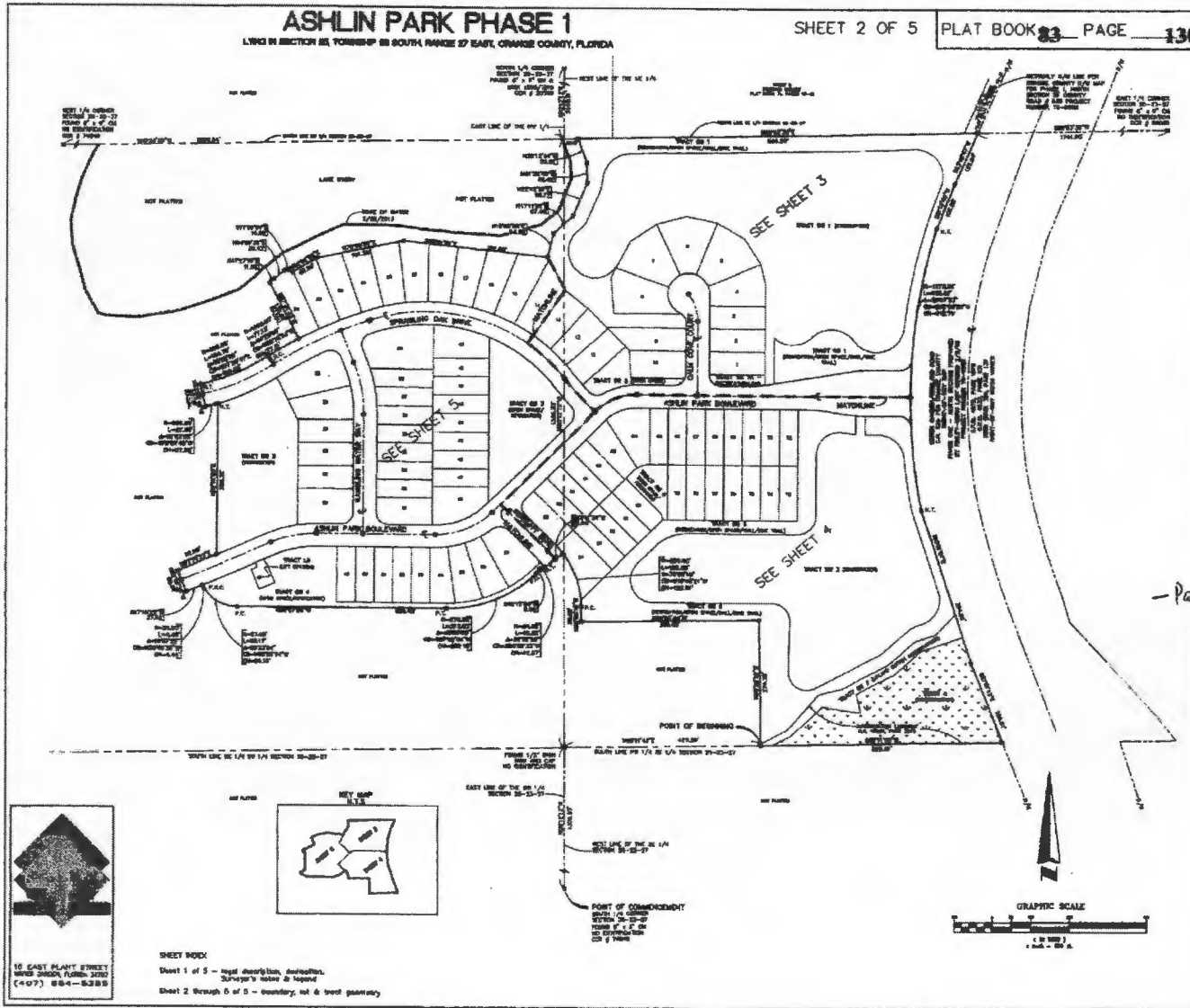
ahw/

2/15/2016

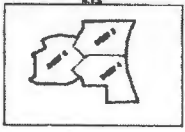
ASHLIN PARK PHASE 1

LING IN SECTION 28, TOWNSHIP 28 SOUTH, RANGE 27 EAST, ORANGE COUNTY, FLORIDA

SHEET 2 OF 5 PLAT BOOK 83 PAGE 130



10 EAST PLANT STREET
 WINTER HAVEN, FLORIDA 33894
 (407) 884-5288



SHEET INDEX:
 Sheet 1 of 5 - legal description, description, surveyor's notes & legend
 Sheet 2 through 5 of 5 - boundary, lot & block geometry

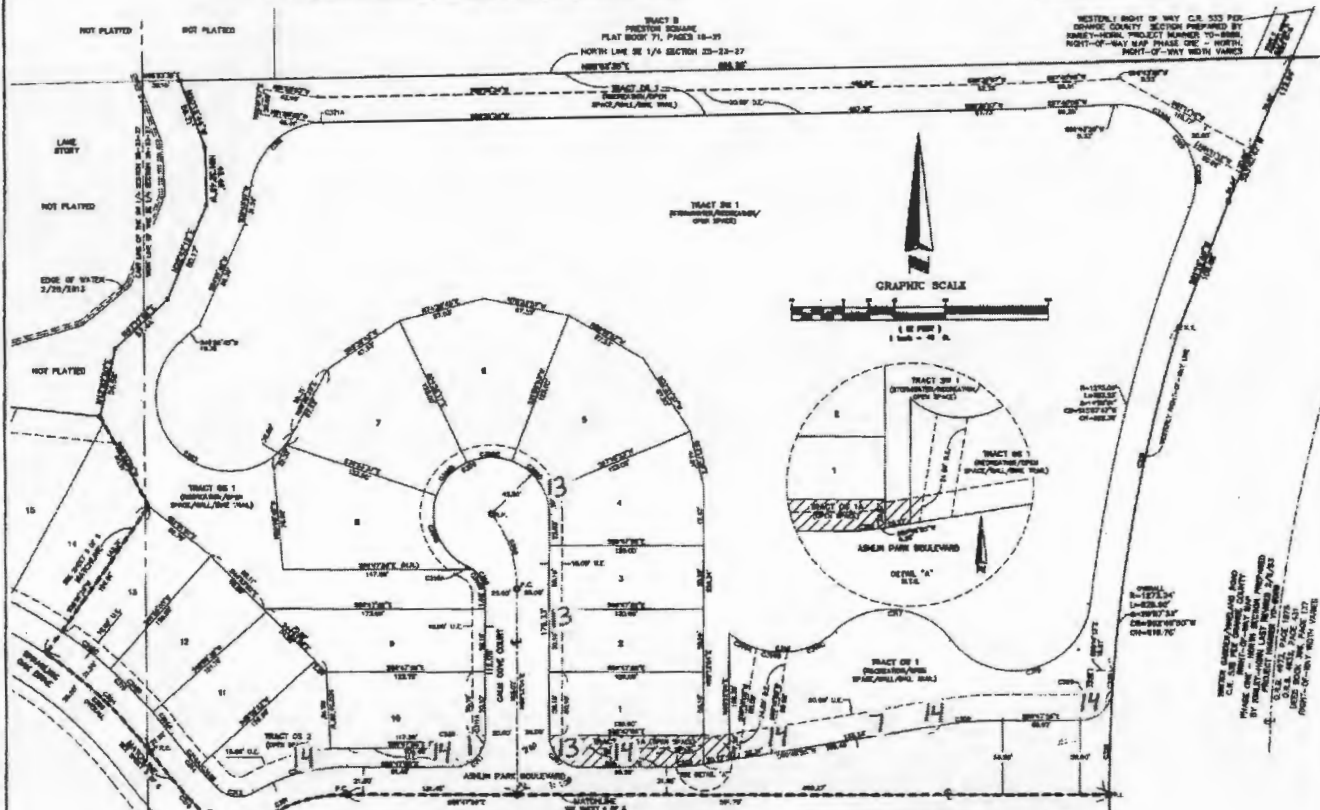
- Parking zones

ASHLIN PARK PHASE 1

LIVING IN SECTION 33, TOWNSHIP 33 SOUTH, RANGE 27 EAST, ORANGE COUNTY, FLORIDA

SHEET 3 OF 5

PLAT BOOK 83 PAGE 131



ORANGE COUNTY
 PLAT BOOK 83 PAGE 131
 ASHLIN PARK PHASE 1
 PREPARED BY
 JAMES H. WATSON, JR.
 SURVEYOR
 1001 S. W. 10th St.
 Ocala, Fla. 32177
 352-233-1111
 352-233-1112
 352-233-1113



15 EAST PLANT STREET
 WINTER GARDEN, FLORIDA 32911
 (407) 838-0306



SHEET INDEX
 Sheet 1 of 5 - legal description, dedication, Surveyor's notes & legend
 Sheet 2 through 5 of 5 - boundary, lot, & tract lot geometry

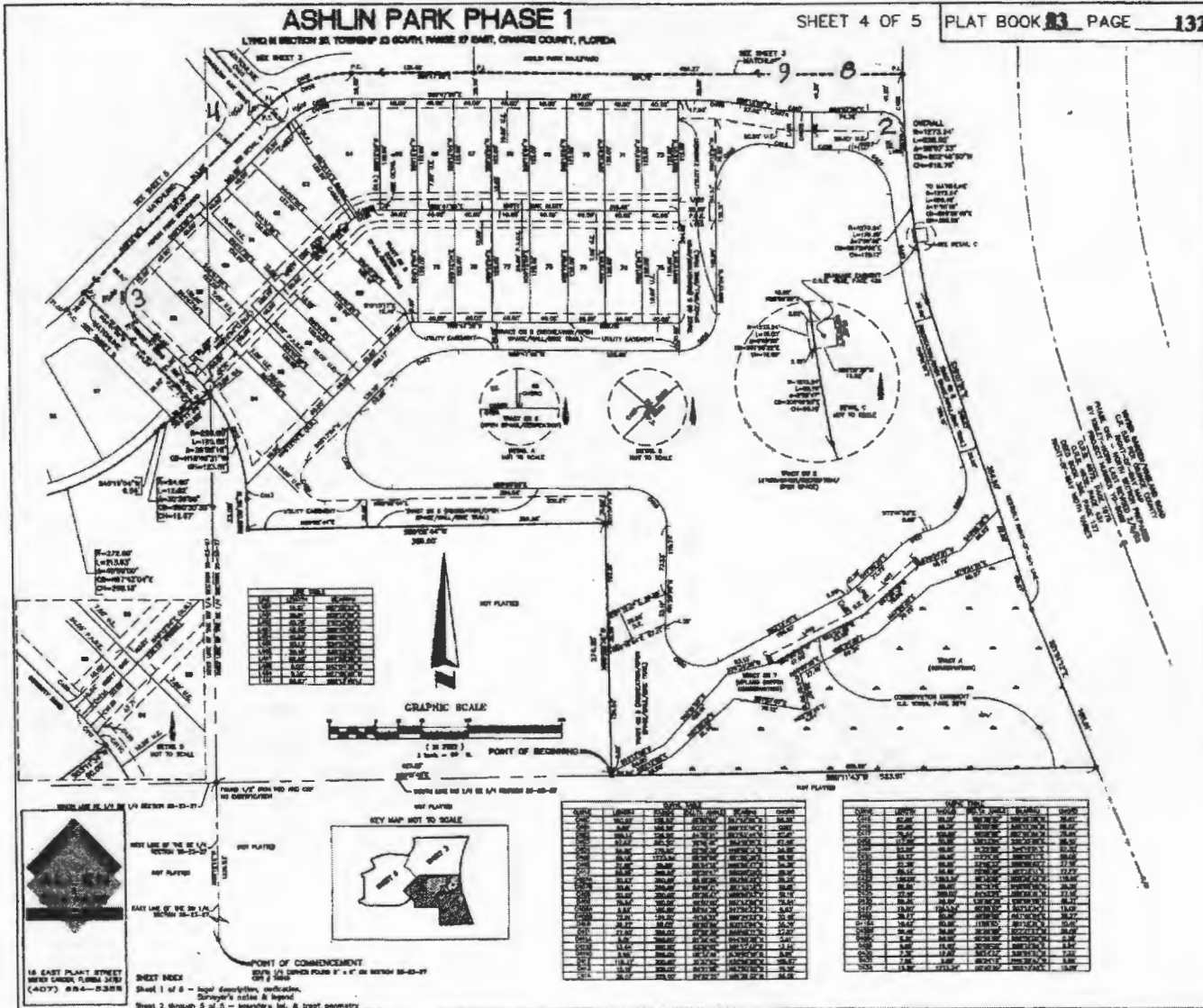
TRACT	LOT	AREA	PERCENT	ACRES
1	1	1.23	100	0.28
1	2	1.23	100	0.28
1	3	1.23	100	0.28
1	4	1.23	100	0.28
1	5	1.23	100	0.28
1	6	1.23	100	0.28
1	7	1.23	100	0.28
1	8	1.23	100	0.28
1	9	1.23	100	0.28
1	10	1.23	100	0.28
1	11	1.23	100	0.28
1	12	1.23	100	0.28
1	13	1.23	100	0.28
1	14	1.23	100	0.28
1	15	1.23	100	0.28

TRACT	LOT	AREA	PERCENT	ACRES
2	1	1.23	100	0.28
2	2	1.23	100	0.28
2	3	1.23	100	0.28
2	4	1.23	100	0.28
2	5	1.23	100	0.28
2	6	1.23	100	0.28
2	7	1.23	100	0.28
2	8	1.23	100	0.28
2	9	1.23	100	0.28
2	10	1.23	100	0.28
2	11	1.23	100	0.28
2	12	1.23	100	0.28
2	13	1.23	100	0.28
2	14	1.23	100	0.28
2	15	1.23	100	0.28



ASHLIN PARK PHASE 1

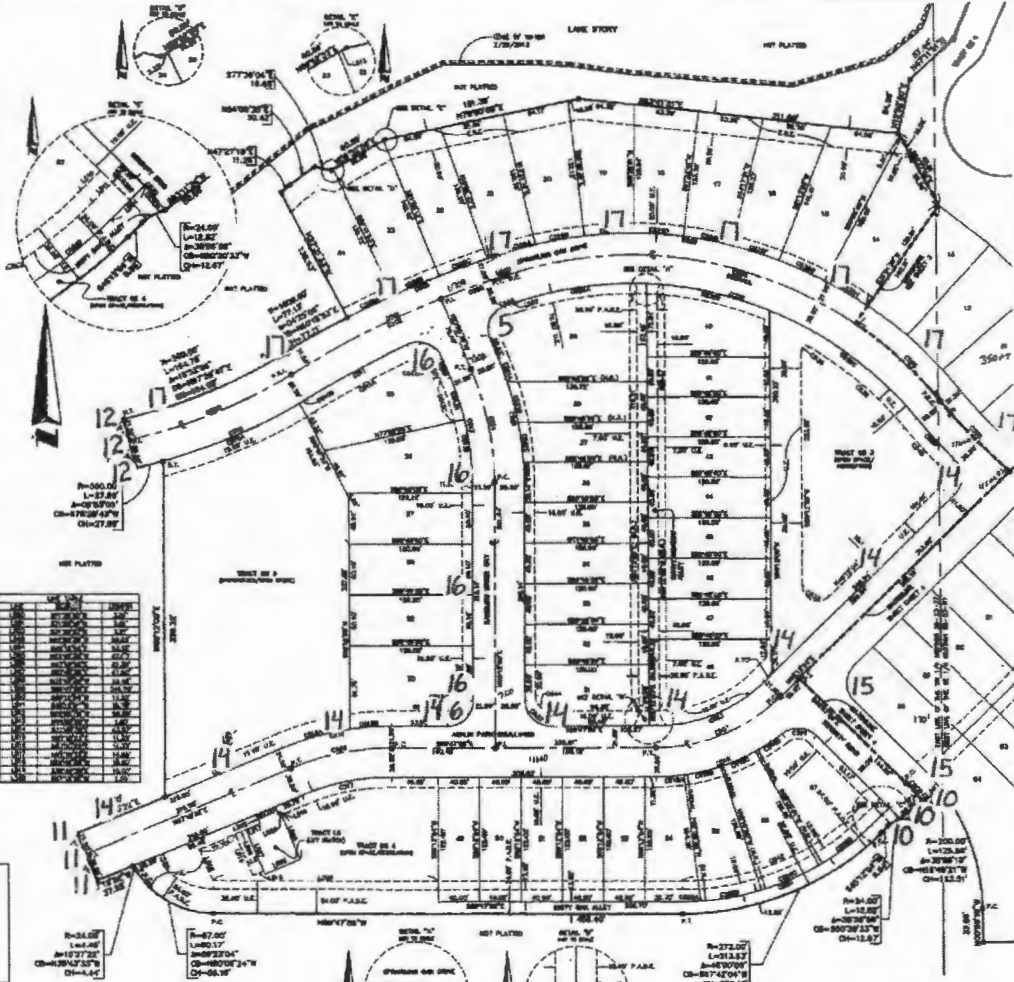
LYNDI II SECTION 24 TOWNSHIP 23 SOUTH RANGE 27 EAST, CHARLIE COUNTY, FLORIDA



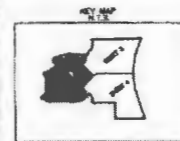
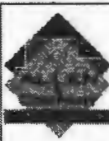
ASHLIN PARK PHASE 1

TRIM H SECTION 28, TOWNSHIP 33 SOUTH, RANGE 27 EAST, ORANGE COUNTY, FLORIDA

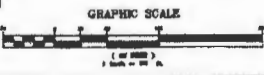
Lot No.	Area (sq. ft.)	Area (sq. m.)	Area (ac.)	Area (sq. ft.)	Area (sq. m.)	Area (ac.)
1	11,500	1,059	0.024	11,500	1,059	0.024
2	11,500	1,059	0.024	11,500	1,059	0.024
3	11,500	1,059	0.024	11,500	1,059	0.024
4	11,500	1,059	0.024	11,500	1,059	0.024
5	11,500	1,059	0.024	11,500	1,059	0.024
6	11,500	1,059	0.024	11,500	1,059	0.024
7	11,500	1,059	0.024	11,500	1,059	0.024
8	11,500	1,059	0.024	11,500	1,059	0.024
9	11,500	1,059	0.024	11,500	1,059	0.024
10	11,500	1,059	0.024	11,500	1,059	0.024
11	11,500	1,059	0.024	11,500	1,059	0.024
12	11,500	1,059	0.024	11,500	1,059	0.024
13	11,500	1,059	0.024	11,500	1,059	0.024
14	11,500	1,059	0.024	11,500	1,059	0.024
15	11,500	1,059	0.024	11,500	1,059	0.024
16	11,500	1,059	0.024	11,500	1,059	0.024
17	11,500	1,059	0.024	11,500	1,059	0.024
18	11,500	1,059	0.024	11,500	1,059	0.024
19	11,500	1,059	0.024	11,500	1,059	0.024
20	11,500	1,059	0.024	11,500	1,059	0.024
21	11,500	1,059	0.024	11,500	1,059	0.024
22	11,500	1,059	0.024	11,500	1,059	0.024
23	11,500	1,059	0.024	11,500	1,059	0.024
24	11,500	1,059	0.024	11,500	1,059	0.024
25	11,500	1,059	0.024	11,500	1,059	0.024
26	11,500	1,059	0.024	11,500	1,059	0.024
27	11,500	1,059	0.024	11,500	1,059	0.024
28	11,500	1,059	0.024	11,500	1,059	0.024
29	11,500	1,059	0.024	11,500	1,059	0.024
30	11,500	1,059	0.024	11,500	1,059	0.024
31	11,500	1,059	0.024	11,500	1,059	0.024
32	11,500	1,059	0.024	11,500	1,059	0.024
33	11,500	1,059	0.024	11,500	1,059	0.024
34	11,500	1,059	0.024	11,500	1,059	0.024
35	11,500	1,059	0.024	11,500	1,059	0.024
36	11,500	1,059	0.024	11,500	1,059	0.024
37	11,500	1,059	0.024	11,500	1,059	0.024
38	11,500	1,059	0.024	11,500	1,059	0.024
39	11,500	1,059	0.024	11,500	1,059	0.024
40	11,500	1,059	0.024	11,500	1,059	0.024
41	11,500	1,059	0.024	11,500	1,059	0.024
42	11,500	1,059	0.024	11,500	1,059	0.024
43	11,500	1,059	0.024	11,500	1,059	0.024
44	11,500	1,059	0.024	11,500	1,059	0.024
45	11,500	1,059	0.024	11,500	1,059	0.024
46	11,500	1,059	0.024	11,500	1,059	0.024
47	11,500	1,059	0.024	11,500	1,059	0.024
48	11,500	1,059	0.024	11,500	1,059	0.024
49	11,500	1,059	0.024	11,500	1,059	0.024
50	11,500	1,059	0.024	11,500	1,059	0.024

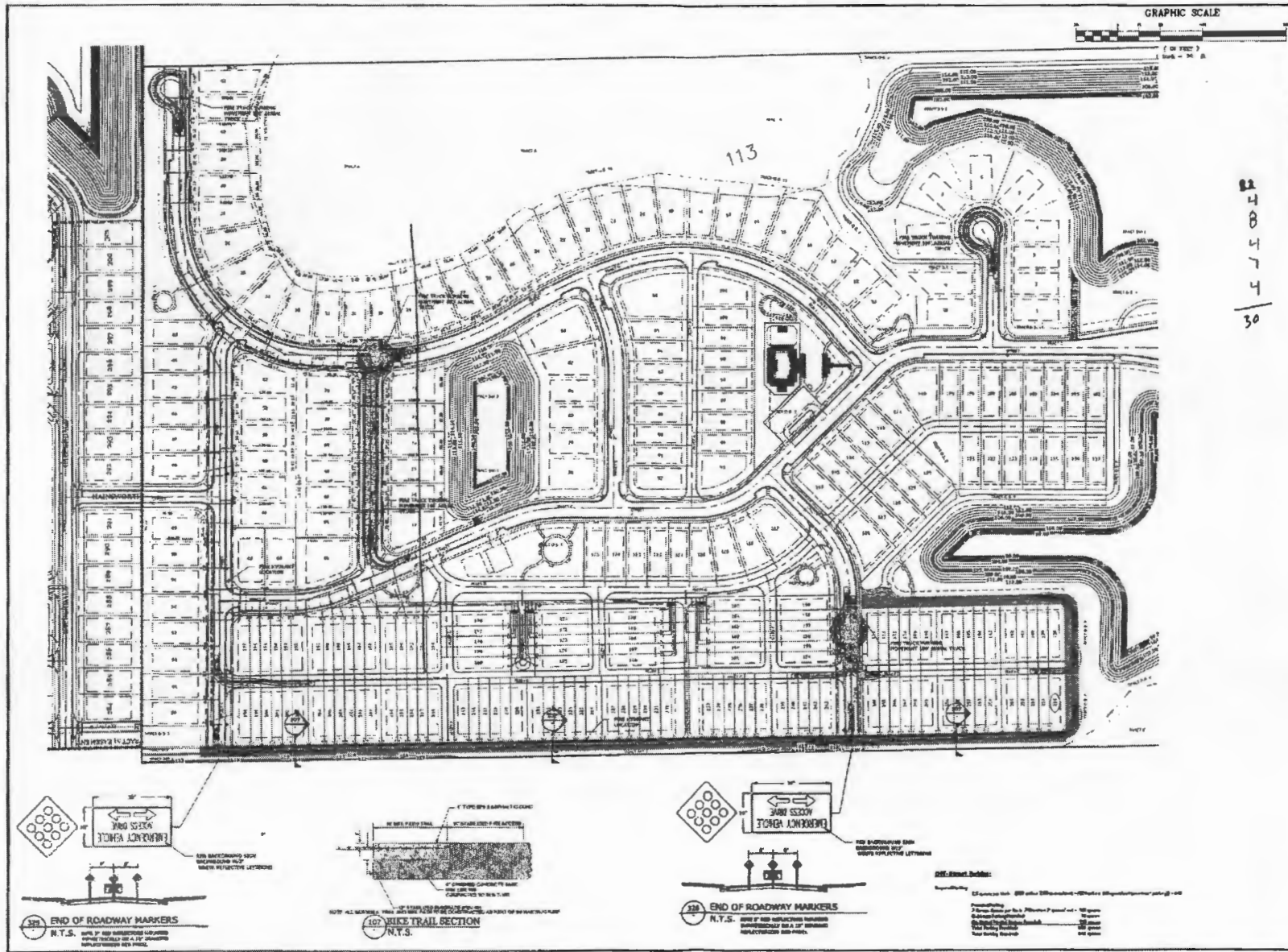


Lot No.	Area (sq. ft.)	Area (sq. m.)	Area (ac.)
1	11,500	1,059	0.024
2	11,500	1,059	0.024
3	11,500	1,059	0.024
4	11,500	1,059	0.024
5	11,500	1,059	0.024
6	11,500	1,059	0.024
7	11,500	1,059	0.024
8	11,500	1,059	0.024
9	11,500	1,059	0.024
10	11,500	1,059	0.024
11	11,500	1,059	0.024
12	11,500	1,059	0.024
13	11,500	1,059	0.024
14	11,500	1,059	0.024
15	11,500	1,059	0.024
16	11,500	1,059	0.024
17	11,500	1,059	0.024
18	11,500	1,059	0.024
19	11,500	1,059	0.024
20	11,500	1,059	0.024
21	11,500	1,059	0.024
22	11,500	1,059	0.024
23	11,500	1,059	0.024
24	11,500	1,059	0.024
25	11,500	1,059	0.024
26	11,500	1,059	0.024
27	11,500	1,059	0.024
28	11,500	1,059	0.024
29	11,500	1,059	0.024
30	11,500	1,059	0.024
31	11,500	1,059	0.024
32	11,500	1,059	0.024
33	11,500	1,059	0.024
34	11,500	1,059	0.024
35	11,500	1,059	0.024
36	11,500	1,059	0.024
37	11,500	1,059	0.024
38	11,500	1,059	0.024
39	11,500	1,059	0.024
40	11,500	1,059	0.024
41	11,500	1,059	0.024
42	11,500	1,059	0.024
43	11,500	1,059	0.024
44	11,500	1,059	0.024
45	11,500	1,059	0.024
46	11,500	1,059	0.024
47	11,500	1,059	0.024
48	11,500	1,059	0.024
49	11,500	1,059	0.024
50	11,500	1,059	0.024



SHEET INDEX
 Sheet 1 of 5 - legal description, dedication, Surveyor's notes & legend
 Sheet 2 through 5 of 5 - boundaries, lot & tract geometry





G. L. SUMMITT
ENGINEERING INC.
Office: Lake Mary
3647 Simonton Place
Lake Mary, Florida 32746
Phone: 407-322-0708
Fax: 407-992-8630
www.gls.com



11
10
9
8
7
6
5
4
3
2
1

Ashton Woods Homes
2450 Maitland Center Parkway
Suite 301
Maitland, FL 32751
(407) 647-3700
(407) 647-9700

Ashlin Park PUD
Subdivision
Orange County, Florida
Final Construction
Plans Phase 1

Fire Truck
Tuning

Please see all other sheets.
Check and double check.

CHARLES W. L. SUMMITT, P.E.
Dates: October 28, 2013
Professional Engineer
State of Florida

Revisions	
1	
2	
3	
4	
5	
6	
7	
8	
9	
10	
11	
12	
13	
14	
15	
16	
17	
18	
19	
20	

SHEET NUMBER
51 OF 65