



Interoffice Memorandum

APPROVED BY ORANGE COUNTY BOARD OF COUNTY COMMISSIONERS

January 22, 2016

BCC Mtg. Date: Mar. 1, 2016

TO: Mayor Teresa Jacobs and Board of County Commissioners

FROM: Mark V. Massaro, P.E., Director, Public Works Department

CONTACT PERSON: Ruby Dempsey Rozier, Manager Traffic Engineering

PHONE NUMBER: (407) 836-7890

SUBJ: Installation of Traffic Control Devices and "No Parking" Signs in West Lake Hancock Estates Phase 5

Our staff recommends that the following traffic control devices be installed in West Lake Hancock Estates Phase 5.

- Install "STOP" signs on: Black Quill Drive at Porter Road, Bishop Square Drive at Black Quill Drive, Bishop Square Drive at Lake Hancock Boulevard, Woodstar Lane at Black Quill Drive, John Hancock Drive (SB) at Black Quill Drive, John Hancock Drive (NB) at Black Quill Drive, Loon Avenue (SB) at Black Quill Drive, Loon Avenue (NB) at Black Quill Drive, Loon Avenue at Lake Hancock Boulevard

The Fire Marshal recommends that the following "No Parking" signs be installed in West Lake Hancock Estates Phase 5.

- Install "NO PARKING" signs on: Bishop Square Drive, Black Quill Drive, John Hancock Drive, Loon Avenue

Action Requested: Approval of Traffic Control Devices and "No Parking" signs in West Lake Hancock Estates Phase 5. District 1.

MVM/RDR/AHW/ns

Attachments

**West Lake Hancock Estates Phase 5**  
LOCATED IN SECTION 28, TOWNSHIP 23 SOUTH, RANGE 27 EAST  
ORANGE COUNTY, FLORIDA  
DISTRICT # 1

**STOP/STREET**

<b>(1)</b>	<b>(Ft E)</b>	<b>on Black Quill Drive (9 inch) at Porter Road (9 inch)</b>	<b>14700 16100</b>
<b>(2)</b>	<b>(Ft N)</b>	<b>on Bishop Square Drive at Black Quill Drive</b>	<b>7600 14600</b>
<b>(3)</b>	<b>(Ft S)</b>	<b>on Bishop Square Drive at Lake Hancock Boulevard</b>	<b>7500 7200</b>
<b>(4)</b>	<b>(Ft S)</b>	<b>on Woodstar Lane at Black Quill Drive</b>	<b>8000 14600</b>
<b>(5)</b>	<b>(Ft N)</b>	<b>on John Hancock Drive (SB) at Black Quill Drive</b>	<b>8000 14500</b>
<b>(6)</b>	<b>(Ft S)</b>	<b>on John Hancock Drive (NB) at Black Quill Drive</b>	<b>8000 14500</b>
<b>(7)</b>	<b>(Ft N)</b>	<b>on Loon Avenue (SB) at Black Quill Drive</b>	<b>7600 14500</b>
<b>(8)</b>	<b>(Ft S)</b>	<b>on Loon Avenue at Black Quill Drive (NB)</b>	<b>7600 14500</b>
<b>(9)</b>	<b>(Ft S)</b>	<b>on Loon Avenue at Lake Hancock Boulevard</b>	<b>7500 7500</b>

**SPEED LIMIT 25 MPH**

<b>(10)</b>	<b>(Ft E)</b>	<b>on Black Quill Drive at Porter Road</b>
-------------	---------------	--

**NO PARKING with arrows**

<b>(11)</b>	<b>on Bishop Square Drive extending south from Lake Hancock Boulevard to Black Quill Drive on the west side</b>
<b>(12)</b>	<b>on Black Quill Drive extending east from Porter Road to Lake Hancock Boulevard on the south side</b>

**(13)**

**on John Hancock Drive extending south from Lake Hancock Boulevard to Black Quill Drive on the east side**

**(14)**

**on Loon Avenue extending south from Lake Hancock Boulevard to Black Quill Drive the on the east side**

**ahw/**

**1/22/2016**

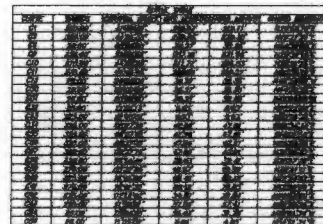
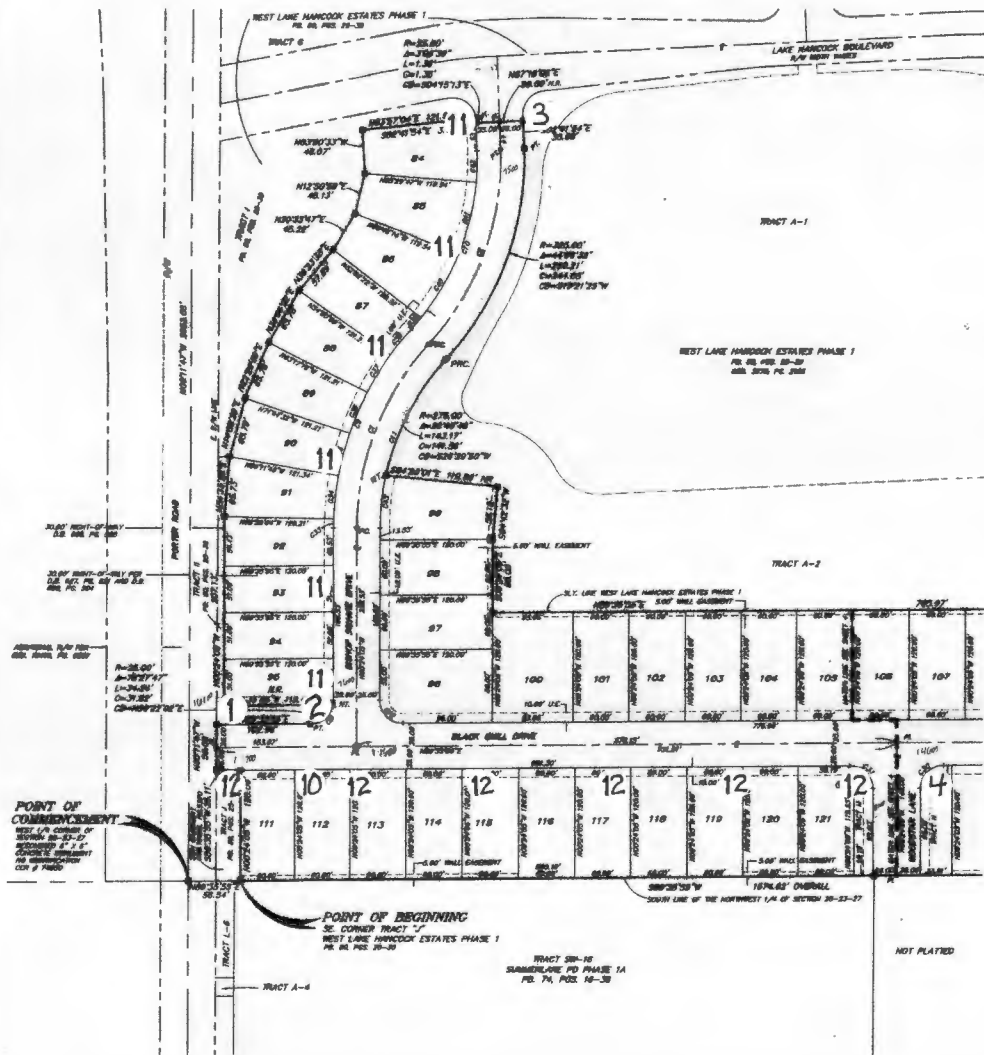




# WEST LAKE HANCOCK ESTATES PHASE 5

LOCATED IN SECTION 28, TOWNSHIP 23 SOUTH, RANGE 27 EAST  
ORANGE COUNTY, FLORIDA

PLAT BOOK **85** PAGE **33**  
SHEET 3 OF 4



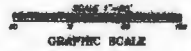
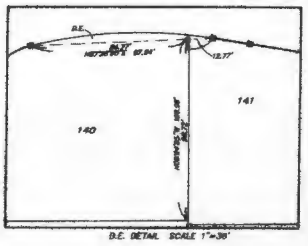
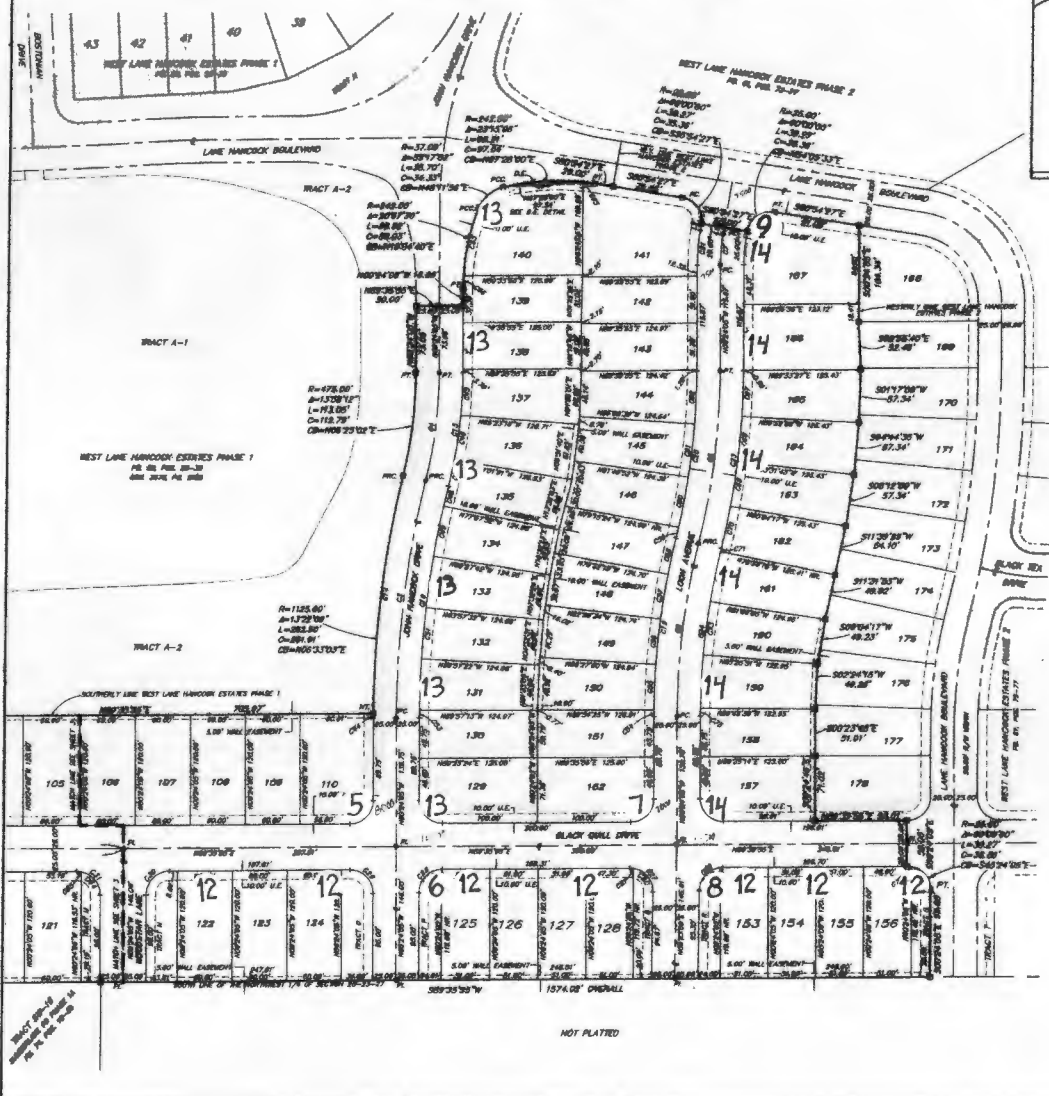
WEST LAKE HANCOCK ESTATES PHASE 5  
SHEET 3 OF 4 - LAKESIDE DRIVE, 100' WIDE  
SHEET 4 OF 4 - GARAGE, SOUTH 2' LST BOUNDARY  
SHEET 5 OF 4 - GARAGE, SOUTH 2' LST BOUNDARY



10 EAST PLANT STREET  
ORANGE COUNTY, FLORIDA 32067  
(407) 874-0388  
L.S. #1723

# WEST LAKE HANCOCK ESTATES PHASE 5

LOCATED IN SECTION 28, TOWNSHIP 23 SOUTH, RANGE 27 EAST  
ORANGE COUNTY, FLORIDA



Lot No.	Area (sq. ft.)	Area (sq. m.)
121	1,300	120
122	1,300	120
123	1,300	120
124	1,300	120
125	1,300	120
126	1,300	120
127	1,300	120
128	1,300	120
129	1,300	120
130	1,300	120
131	1,300	120
132	1,300	120
133	1,300	120
134	1,300	120
135	1,300	120
136	1,300	120
137	1,300	120
138	1,300	120
139	1,300	120
140	1,300	120
141	1,300	120
142	1,300	120
143	1,300	120
144	1,300	120
145	1,300	120
146	1,300	120
147	1,300	120
148	1,300	120
149	1,300	120
150	1,300	120
151	1,300	120
152	1,300	120
153	1,300	120
154	1,300	120
155	1,300	120
156	1,300	120
157	1,300	120
158	1,300	120
159	1,300	120
160	1,300	120
161	1,300	120
162	1,300	120
163	1,300	120
164	1,300	120
165	1,300	120
166	1,300	120
167	1,300	120
168	1,300	120
169	1,300	120
170	1,300	120
171	1,300	120
172	1,300	120
173	1,300	120
174	1,300	120
175	1,300	120
176	1,300	120
177	1,300	120
178	1,300	120
179	1,300	120
180	1,300	120
181	1,300	120
182	1,300	120
183	1,300	120
184	1,300	120

Lot No.	Area (sq. ft.)	Area (sq. m.)
121	1,300	120
122	1,300	120
123	1,300	120
124	1,300	120
125	1,300	120
126	1,300	120
127	1,300	120
128	1,300	120
129	1,300	120
130	1,300	120
131	1,300	120
132	1,300	120
133	1,300	120
134	1,300	120
135	1,300	120
136	1,300	120
137	1,300	120
138	1,300	120
139	1,300	120
140	1,300	120
141	1,300	120
142	1,300	120
143	1,300	120
144	1,300	120
145	1,300	120
146	1,300	120
147	1,300	120
148	1,300	120
149	1,300	120
150	1,300	120
151	1,300	120
152	1,300	120
153	1,300	120
154	1,300	120
155	1,300	120
156	1,300	120
157	1,300	120
158	1,300	120
159	1,300	120
160	1,300	120
161	1,300	120
162	1,300	120
163	1,300	120
164	1,300	120
165	1,300	120
166	1,300	120
167	1,300	120
168	1,300	120
169	1,300	120
170	1,300	120
171	1,300	120
172	1,300	120
173	1,300	120
174	1,300	120
175	1,300	120
176	1,300	120
177	1,300	120
178	1,300	120
179	1,300	120
180	1,300	120
181	1,300	120
182	1,300	120
183	1,300	120
184	1,300	120



NOT PLATED

18 EAST PLANT STREET  
TALLahassee, FLORIDA 32310  
(407) 834-9385  
18 8203

PHASE 1  
TRACT "JJ"

PHASE 2

PHASE 1  
TRACT "G"

LAKE HANCOCK BLVD

PHASE 1  
TRACT "H"

PHASE 2  
TRACT "W"

West 1k Hancock Ests PD PH 5  
Overlook @ Handm P 5

POND 20  
PHASE 1  
TRACT "A-1"

PHASE 1

PHASE 1  
TRACT "A-2"

PHASE 5

