



Interoffice Memorandum

August 24, 2015

APPROVED
BY ORANGE COUNTY BOARD
OF COUNTY COMMISSIONERS
OCT 20 2015 *SK/BS*

TO: Mayor Teresa Jacobs
and Board of County Commissioners

FROM: Mark V. Massaro, P.E., Director, Public Works Department *Joseph C. Hill*

CONTACT PERSON: Ruby Dempsey Rozier, Manager *RDR*
Traffic Engineering

PHONE NUMBER: (407) 836-7890

SUBJ: Installation of Traffic Control Devices and "No Parking" Signs in
Watermark Phase 2A

Our staff recommends that the following traffic control devices be installed in Watermark Phase 2A.

- Install "STOP" signs on:
 - Crested Plume Drive at Holliston Creek Place
 - Crested Plume Drive at Summerlake Groves Street
 - Holliston Creek Place at Summerlake Groves Street

The Fire Marshal recommends that the following "No Parking" signs be installed in Watermark Phase 2A.

- Install "NO PARKING" signs on:
 - Holliston Creek Place

Action Requested: Approval of Traffic Control Devices and "No Parking" sign installations in Watermark Phase 2A. District 1.

MVM/RDR/AHW/ns

Attachments

WATERMARK PHASE 2A
LOCATED IN SECTION 4, TOWNSHIP 24 SOUTH, RANGE 27 EAST
ORANGE COUNTY, FLORIDA
DISTRICT # 1

STOP/STREET

<u>(1)</u>	(Ft W)	on Crested Plume Drive at Holliston Creek Place	14500 9400
<u>(2)</u>	(Ft E)	on Crested Plume Drive at Summerlake Groves Street	14600 00
<u>(3)</u>	(Ft N)	on Summerlake Groves Street at Holliston Creek Place	9600 00

END OF ROAD TREATMENT

<u>(4)</u>	(FtN)	on Summerlake Groves at Crested Plume Drive
<u>(5)</u>	(FtS)	on Summerlake Groves at Holliston Creek Place

NO PARKING with arrows

<u>(6)</u>	on Holliston Creek Place from Seton Creek Boulevard extending west 775ft on the north side
-------------------	---

ahw/

8/24/2015

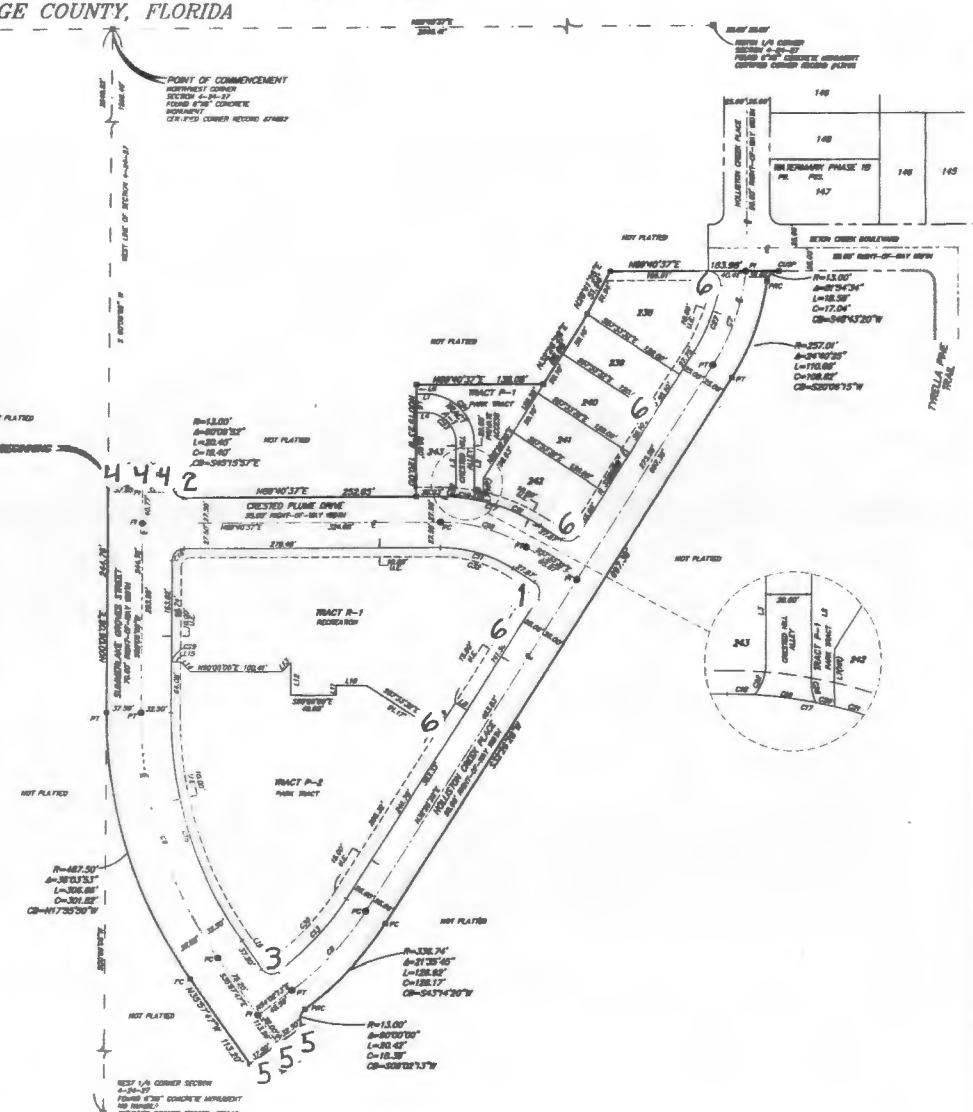
WATERMARK PHASE 2A

LOCATED IN SECTION 4, TOWNSHIP 24 SOUTH, RANGE 27 EAST
ORANGE COUNTY, FLORIDA



LINE	BEARING	LENGTH
L1	N 89°50'42" E	33.80'
L2	S 89°50'42" E	33.80'
L3	N 89°50'42" W	33.80'
L4	S 89°50'42" W	33.80'
L5	N 89°50'42" E	33.80'
L6	S 89°50'42" E	33.80'
L7	N 89°50'42" W	33.80'
L8	S 89°50'42" W	33.80'
L9	N 89°50'42" E	33.80'
L10	S 89°50'42" E	33.80'
L11	N 89°50'42" W	33.80'
L12	S 89°50'42" W	33.80'
L13	N 89°50'42" E	33.80'
L14	S 89°50'42" E	33.80'
L15	N 89°50'42" W	33.80'
L16	S 89°50'42" W	33.80'

CHAIN	BEARING	SOUTHERLY	NORTHERLY	CURVED	CURVED BEARING
C1	S 89°50'42" E	10.00'	10.00'	S 89°50'42" E	
C2	S 89°50'42" E	10.00'	10.00'	S 89°50'42" E	
C3	S 89°50'42" E	10.00'	10.00'	S 89°50'42" E	
C4	S 89°50'42" E	10.00'	10.00'	S 89°50'42" E	
C5	S 89°50'42" E	10.00'	10.00'	S 89°50'42" E	
C6	S 89°50'42" E	10.00'	10.00'	S 89°50'42" E	
C7	S 89°50'42" E	10.00'	10.00'	S 89°50'42" E	
C8	S 89°50'42" E	10.00'	10.00'	S 89°50'42" E	
C9	S 89°50'42" E	10.00'	10.00'	S 89°50'42" E	
C10	S 89°50'42" E	10.00'	10.00'	S 89°50'42" E	
C11	S 89°50'42" E	10.00'	10.00'	S 89°50'42" E	
C12	S 89°50'42" E	10.00'	10.00'	S 89°50'42" E	
C13	S 89°50'42" E	10.00'	10.00'	S 89°50'42" E	
C14	S 89°50'42" E	10.00'	10.00'	S 89°50'42" E	
C15	S 89°50'42" E	10.00'	10.00'	S 89°50'42" E	
C16	S 89°50'42" E	10.00'	10.00'	S 89°50'42" E	
C17	S 89°50'42" E	10.00'	10.00'	S 89°50'42" E	
C18	S 89°50'42" E	10.00'	10.00'	S 89°50'42" E	
C19	S 89°50'42" E	10.00'	10.00'	S 89°50'42" E	
C20	S 89°50'42" E	10.00'	10.00'	S 89°50'42" E	
C21	S 89°50'42" E	10.00'	10.00'	S 89°50'42" E	
C22	S 89°50'42" E	10.00'	10.00'	S 89°50'42" E	
C23	S 89°50'42" E	10.00'	10.00'	S 89°50'42" E	
C24	S 89°50'42" E	10.00'	10.00'	S 89°50'42" E	
C25	S 89°50'42" E	10.00'	10.00'	S 89°50'42" E	
C26	S 89°50'42" E	10.00'	10.00'	S 89°50'42" E	
C27	S 89°50'42" E	10.00'	10.00'	S 89°50'42" E	
C28	S 89°50'42" E	10.00'	10.00'	S 89°50'42" E	
C29	S 89°50'42" E	10.00'	10.00'	S 89°50'42" E	
C30	S 89°50'42" E	10.00'	10.00'	S 89°50'42" E	



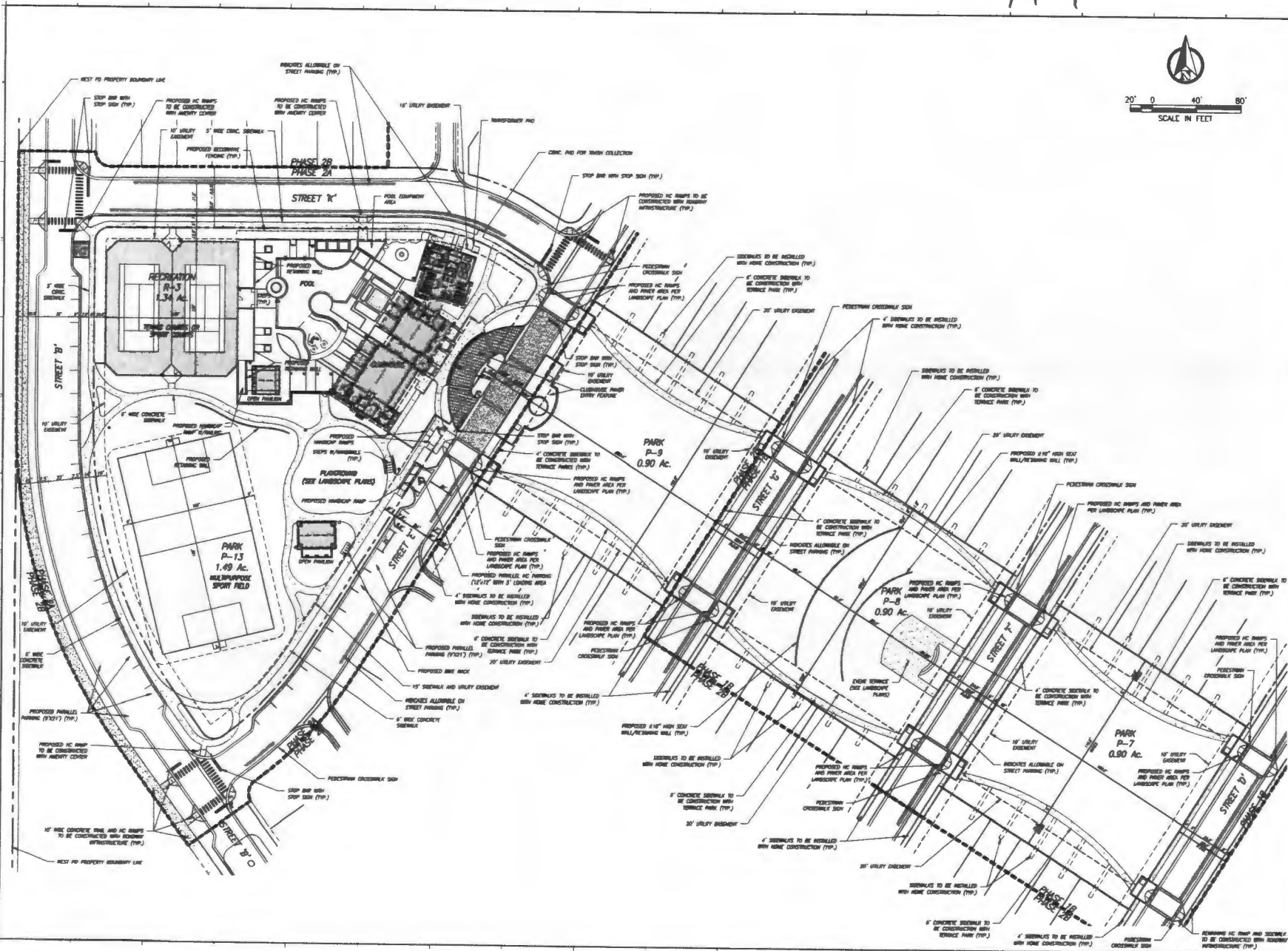
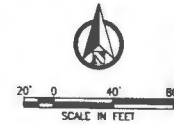
Box 475
B15901921

14-S-025

Key Map



Coordinate



1.	24" x 36" REVISION FOR THE ORDINANCE
2.	24" x 36" REVISION FOR THE ORDINANCE
1.	1/4" x 36" REVISION FOR THE ORDINANCE
NO DATE	DESCRIPTION
DATE:	STANDARD CIVIL ENGINEERING
DATE:	January 23, 2014
DATE:	12/07
DESIGNED BY:	EDW/PLM
CHECKED BY:	JFC
DESIGNED BY:	EDW/PLM
APPROVED BY:	EDW/PLM
SCALE:	1" = 60'

HORIZON WEST VILLAGE F PARCEL S-3 (R-3, P-9 & P-15) S-5 (P-7 & P-8)

Submitted To: ORANGE COUNTY, FL
 Sheet Title: CLUBHOUSE & TERRACE PARKS SITE PLAN (Parcels S-3 & S-5)

Sheet No: C3.00

DATE: May 22, 2014



Paulsen & Bennett, L.L.C.
 4035 Phillips Lane, Suite 10, Orlando, FL 32814
 Tel: 407-877-2004 www.paulsenandbennett.com
 Ring the life 308™

2. PARTIAL 14-S-025 REVISION - CORRECTED REVISIONS TO MATCH THE CLUBHOUSE LAYOUTS - C3.00-SP