



Interoffice Memorandum

August 19, 2015

APPROVED
BY ORANGE COUNTY BOARD
OF COUNTY COMMISSIONERS

OCT 20 2015 *JK/BS*

TO: Mayor Teresa Jacobs
and Board of County Commissioners

FROM: Mark V. Massaro, P.E., Director, Public Works Department *Joseph C. Kelly*

CONTACT PERSON: Ruby Dempsey Rozier, Manager *2/1/15*
Traffic Engineering

PHONE NUMBER: (407) 836-7890

SUBJ: **Installation of Traffic Control Devices and "No Parking" Signs in Watermark Phase 1B**

Our staff recommends that the following traffic control devices be installed in Watermark Phase 1B.

Install "STOP" signs on:

- Woodcrane Drive at Winter Stay Drive
- Glade Hill Park Way at Woodcrane Drive
- Holliston Creek Place at Glade Hill Park Way
- Glade Hill Park Way at Holliston Creek Place
- Scott Key Drive at Holliston Creek Place
- Scott Key Drive at Holliston Creek Place
- Scott Key Drive at Woodcrane Drive
- Woodcrane Drive (SB) at Seton Creek Boulevard
- Woodcrane Drive (NB) at Seton Creek Boulevard
- Meadow Hunt Way at Seton Creek Boulevard
- Tyrella Pine Trail at Seton Creek Boulevard
- Seton Creek Boulevard (WB) at Holliston Creek Place
- Seton Creek Boulevard (EB) at Holliston Creek Place
- Winter Stay Drive at Busaco Park Way
- Busaco Park Way at Seton Creek Boulevard
- Seton Creek Boulevard at Seidel Road

The Fire Marshal recommends that the following "No Parking" signs be installed in Watermark Phase 1B.

Install "NO PARKING" signs on:

- Winter Stay Drive
- Glade Hill Park Way
- Scott Key Drive
- Seton Creek Boulevard
- Holliston Creek Place
- Tyrella Pine Trail
- Meadow Hunt Way
- Woodcrane Drive
- Busaco Park Way

Action Requested: Approval of Traffic Control Devices and "No Parking" sign installations in Watermark Phase 1B. District 1.

MVM/RDR/AHW/ns

Attachments

WATERMARK PHASE 1B
LOCATED IN SECTION 4, TOWNSHIP 24 SOUTH, RANGE 27 EAST
ORANGE COUNTY, FLORIDA
DISTRICT # 1

STOP/STREET

(1)	(Ft S)	on Woodcrane Drive at Winter Stay Drive	9200 14500
(2)	(Ft W)	on Glade Hill Park Way at Woodcrane Drive	14600 9200
(3)	(Ft S)	on Glade Hill Park Way at Holliston Creek Place	14700 9700
(4)	(Ft N)	on Glade Hill Park Way at Holliston Creek Place	14700 9200
(5)	(Ft S)	on Scott Key Drive (WB) at Holliston Creek Place	14700 9200
(6)	(Ft W)	on Scott Key Drive (EB) at Holliston Creek Place	14700 9200
(7)	(Ft S)	on Scott Key Drive at Woodcrane Drive	14600 9200
(8)	(Ft N)	on Woodcrane Drive (SB) at Seton Creek Boulevard	9300 14600
(9)	(Ft S)	on Woodcrane Drive (NB) at Seton Creek Boulevard	9300 14600
(10)	(Ft W)	on Meadow Hunt Way at Seton Creek Boulevard	9300 14600
(11)	(Ft S)	on Tyrella Pine Trail at Seton Creek Boulevard	9300 14600
(12)	(Ft N)	on Seton Creek Boulevard (WB) at Holliston Creek Place	14700 9300
(13)	(Ft S)	on Seton Creek Boulevard (EB) at Holliston Creek Place	14700 9300
(14)	(Ft W)	on Winter Stay Drive at Busaco Park Way	14500 9200

<u>(15)</u>	(Ft S)	on Busaco Park Way at Seton Creek Boulevard	9300 14500
<u>(16)</u>	(Ft N)	on Seton Creek Boulevard (9 inch) at Seidel Road (9 inch)	14400 9400

SPEED LIMIT 25 MPH

<u>(17)</u>	(Ft S)	on Seton Creek Boulevard at Seidel Road
--------------------	---------------	--

END OF ROAD TREATMENT

<u>(18)</u>	(FtW)	on Winter Stay Drive at Woodcrane Drive
<u>(19)</u>	(FtW)	on Glade Hill Park Way at Holliston Creek Place
<u>(20)</u>	(FtW)	on Scott Key Drive at Holliston Creek Place
<u>(21)</u>	(FtW)	on Seton Creek Boulevard at Holliston Creek Place
<u>(22)</u>	(FtN)	on Winter Stay Drive at Woodcrane Drive
<u>(23)</u>	(FtS)	on Glade Hill Park Way at Holliston Creek Place
<u>(24)</u>	(FtS)	on Scott Key Drive at Holliston Creek Place
<u>(25)</u>	(FtS)	on Seton Creek Boulevard at Holliston Creek Place

NO PARKING with arrows

<u>(26)</u>	on Winter Stay Drive from Busaco Park Way extending west 775ft on the south side
<u>(27)</u>	on Glade Hill Park Way from Woodcrane Drive to Holliston Creek Place on the north side
<u>(28)</u>	on Scott Key Drive from Woodcrane Drive to Holliston Creek Place on the north side

- (29)** on Seton Creek Boulevard from Seidel Road to Holliston Creek Place on the south side
- (30)** on Holliston Creek Place from Seton Creek Boulevard to Glade Hill Park Way on the west side
- (31)** on Tyrella Pine Trail from Seton Creek Boulevard extending south 775ft on the west side
- (32)** on Meadow Hunt Way from Seton Creek Boulevard extending south 955ft on the west side
- (33)** on Woodcrane Drive from Winter Stay Drive extending south 2025ft south on the west side
- (34)** on Busaco Park Way starting 155ft north of Winter Stay extending south to Seton Creek Boulevard on the west side

ahw/

8/19/2015

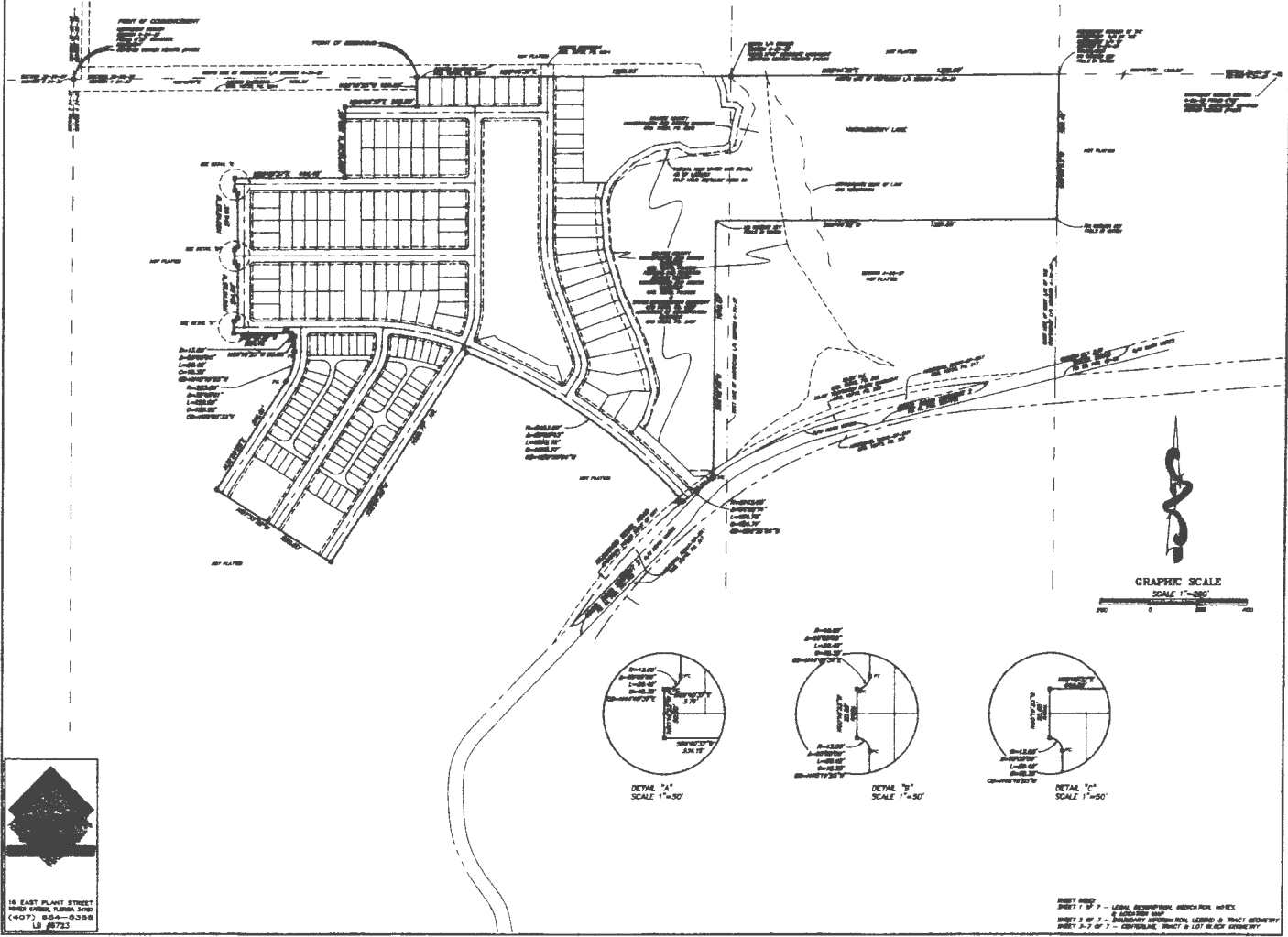
WATERMARK PHASE 1B

LOCATED IN SECTION 4, TOWNSHIP 24 SOUTH, RANGE 27 EAST
ORANGE COUNTY, FLORIDA

PLAT BOOK **84** PAGE **33**

SHEET 2 OF 6

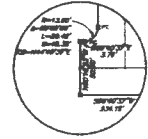
BOUNDARY INFORMATION SHEET



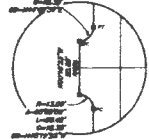
- Parking Zones



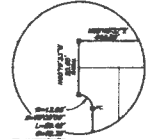
16 EAST PLANT STREET
 WINDY HAVEN, FLORIDA 32080
 (407) 834-0308
 LB 8723



DETAIL "A"
SCALE 1"=30'



DETAIL "B"
SCALE 1"=30'



DETAIL "C"
SCALE 1"=30'

SHEET 1 OF 7 - LEGAL SURVEYING RECORD MAPS
 SHEET 2 OF 7 - ACCESS MAP
 SHEET 3 OF 7 - PRELIMINARY APPROVAL LAYOUT & TRACT BOUNDARY
 SHEET 4 OF 7 - CONFORMANCE TRACT & LOT BLOCK BOUNDARY

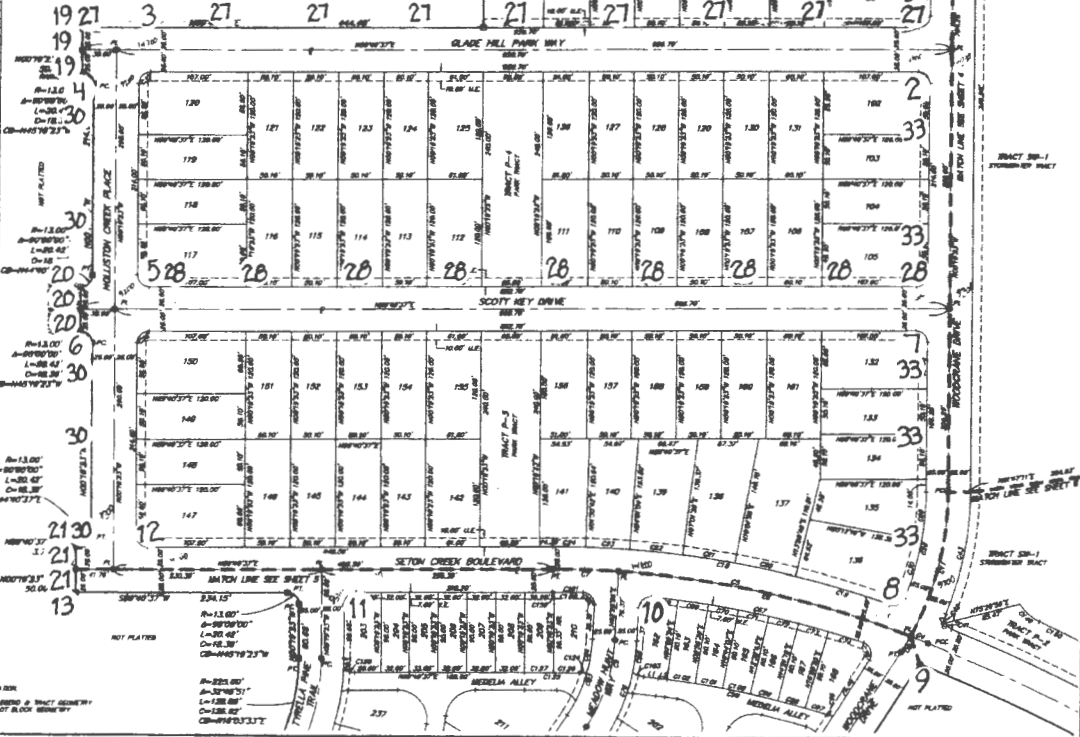
WATERMARK PHASE 1B

LOCATED IN SECTION 4, TOWNSHIP 24 SOUTH, RANGE 27 EAST
ORANGE COUNTY, FLORIDA

POINT OF COMMENCEMENT
SURVEYOR'S CORNER
SECTION 4, TOWNSHIP 24 SOUTH, RANGE 27 EAST
ORANGE COUNTY, FLORIDA

LINE	BEARING	DISTANCE	AREA
1	S 89° 59' 54" W	120.00	120.00
2	S 89° 59' 54" W	120.00	120.00
3	S 89° 59' 54" W	120.00	120.00
4	S 89° 59' 54" W	120.00	120.00
5	S 89° 59' 54" W	120.00	120.00
6	S 89° 59' 54" W	120.00	120.00
7	S 89° 59' 54" W	120.00	120.00
8	S 89° 59' 54" W	120.00	120.00
9	S 89° 59' 54" W	120.00	120.00
10	S 89° 59' 54" W	120.00	120.00
11	S 89° 59' 54" W	120.00	120.00
12	S 89° 59' 54" W	120.00	120.00
13	S 89° 59' 54" W	120.00	120.00
14	S 89° 59' 54" W	120.00	120.00
15	S 89° 59' 54" W	120.00	120.00
16	S 89° 59' 54" W	120.00	120.00
17	S 89° 59' 54" W	120.00	120.00
18	S 89° 59' 54" W	120.00	120.00
19	S 89° 59' 54" W	120.00	120.00
20	S 89° 59' 54" W	120.00	120.00
21	S 89° 59' 54" W	120.00	120.00
22	S 89° 59' 54" W	120.00	120.00
23	S 89° 59' 54" W	120.00	120.00
24	S 89° 59' 54" W	120.00	120.00
25	S 89° 59' 54" W	120.00	120.00
26	S 89° 59' 54" W	120.00	120.00
27	S 89° 59' 54" W	120.00	120.00
28	S 89° 59' 54" W	120.00	120.00
29	S 89° 59' 54" W	120.00	120.00
30	S 89° 59' 54" W	120.00	120.00
31	S 89° 59' 54" W	120.00	120.00
32	S 89° 59' 54" W	120.00	120.00
33	S 89° 59' 54" W	120.00	120.00
34	S 89° 59' 54" W	120.00	120.00
35	S 89° 59' 54" W	120.00	120.00
36	S 89° 59' 54" W	120.00	120.00
37	S 89° 59' 54" W	120.00	120.00
38	S 89° 59' 54" W	120.00	120.00
39	S 89° 59' 54" W	120.00	120.00
40	S 89° 59' 54" W	120.00	120.00
41	S 89° 59' 54" W	120.00	120.00
42	S 89° 59' 54" W	120.00	120.00
43	S 89° 59' 54" W	120.00	120.00
44	S 89° 59' 54" W	120.00	120.00
45	S 89° 59' 54" W	120.00	120.00
46	S 89° 59' 54" W	120.00	120.00
47	S 89° 59' 54" W	120.00	120.00
48	S 89° 59' 54" W	120.00	120.00
49	S 89° 59' 54" W	120.00	120.00
50	S 89° 59' 54" W	120.00	120.00
51	S 89° 59' 54" W	120.00	120.00
52	S 89° 59' 54" W	120.00	120.00
53	S 89° 59' 54" W	120.00	120.00
54	S 89° 59' 54" W	120.00	120.00
55	S 89° 59' 54" W	120.00	120.00
56	S 89° 59' 54" W	120.00	120.00
57	S 89° 59' 54" W	120.00	120.00
58	S 89° 59' 54" W	120.00	120.00
59	S 89° 59' 54" W	120.00	120.00
60	S 89° 59' 54" W	120.00	120.00
61	S 89° 59' 54" W	120.00	120.00
62	S 89° 59' 54" W	120.00	120.00
63	S 89° 59' 54" W	120.00	120.00
64	S 89° 59' 54" W	120.00	120.00
65	S 89° 59' 54" W	120.00	120.00
66	S 89° 59' 54" W	120.00	120.00
67	S 89° 59' 54" W	120.00	120.00
68	S 89° 59' 54" W	120.00	120.00
69	S 89° 59' 54" W	120.00	120.00
70	S 89° 59' 54" W	120.00	120.00
71	S 89° 59' 54" W	120.00	120.00
72	S 89° 59' 54" W	120.00	120.00
73	S 89° 59' 54" W	120.00	120.00
74	S 89° 59' 54" W	120.00	120.00
75	S 89° 59' 54" W	120.00	120.00
76	S 89° 59' 54" W	120.00	120.00
77	S 89° 59' 54" W	120.00	120.00
78	S 89° 59' 54" W	120.00	120.00
79	S 89° 59' 54" W	120.00	120.00
80	S 89° 59' 54" W	120.00	120.00
81	S 89° 59' 54" W	120.00	120.00
82	S 89° 59' 54" W	120.00	120.00
83	S 89° 59' 54" W	120.00	120.00
84	S 89° 59' 54" W	120.00	120.00
85	S 89° 59' 54" W	120.00	120.00
86	S 89° 59' 54" W	120.00	120.00
87	S 89° 59' 54" W	120.00	120.00
88	S 89° 59' 54" W	120.00	120.00
89	S 89° 59' 54" W	120.00	120.00
90	S 89° 59' 54" W	120.00	120.00
91	S 89° 59' 54" W	120.00	120.00
92	S 89° 59' 54" W	120.00	120.00
93	S 89° 59' 54" W	120.00	120.00
94	S 89° 59' 54" W	120.00	120.00
95	S 89° 59' 54" W	120.00	120.00
96	S 89° 59' 54" W	120.00	120.00
97	S 89° 59' 54" W	120.00	120.00
98	S 89° 59' 54" W	120.00	120.00
99	S 89° 59' 54" W	120.00	120.00
100	S 89° 59' 54" W	120.00	120.00

GRAPHIC SCALE
SCALE 1"=50'



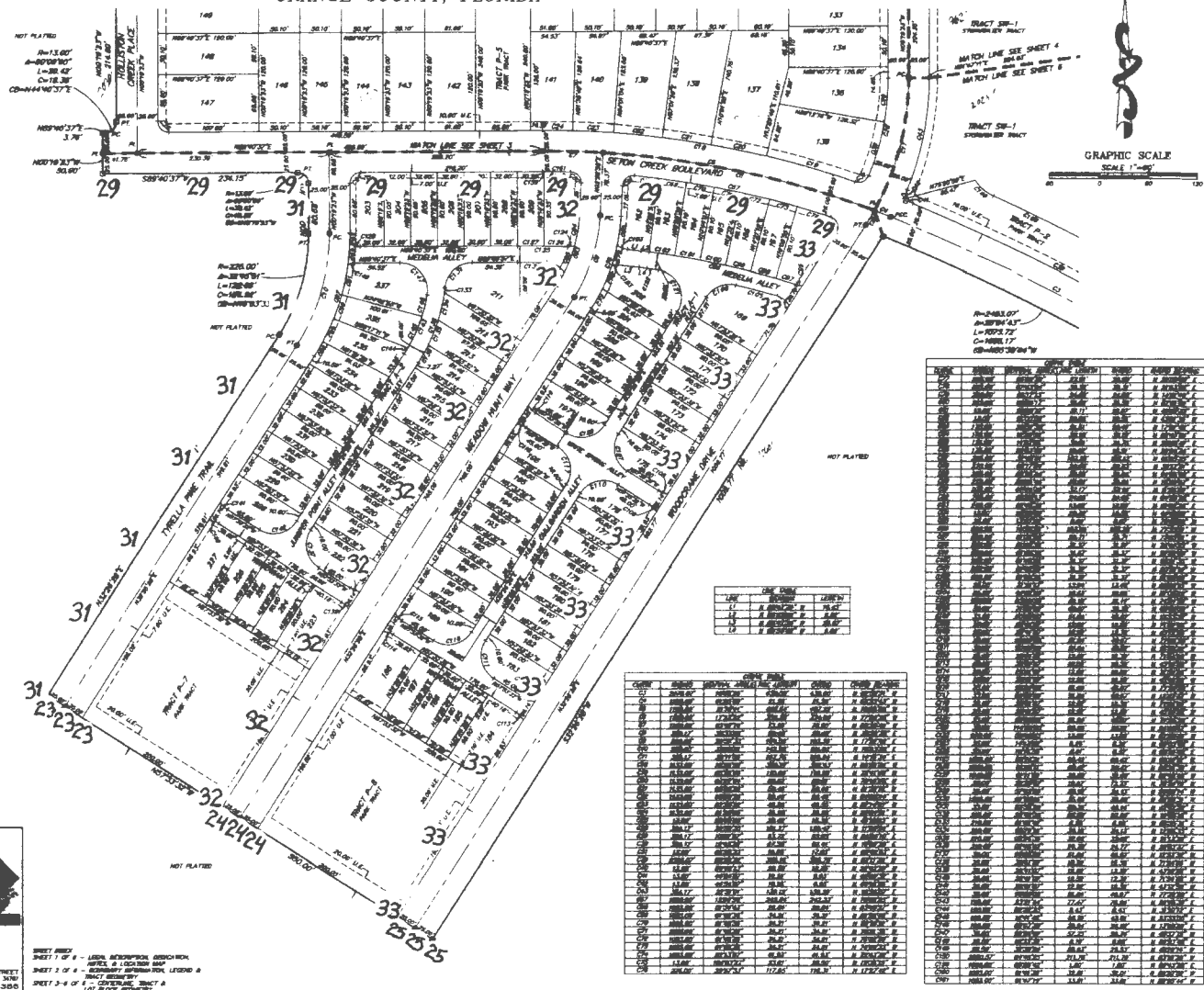
LINE	BEARING	DISTANCE	AREA
1	S 89° 59' 54" W	120.00	120.00
2	S 89° 59' 54" W	120.00	120.00
3	S 89° 59' 54" W	120.00	120.00
4	S 89° 59' 54" W	120.00	120.00
5	S 89° 59' 54" W	120.00	120.00
6	S 89° 59' 54" W	120.00	120.00
7	S 89° 59' 54" W	120.00	120.00
8	S 89° 59' 54" W	120.00	120.00
9	S 89° 59' 54" W	120.00	120.00
10	S 89° 59' 54" W	120.00	120.00
11	S 89° 59' 54" W	120.00	120.00
12	S 89° 59' 54" W	120.00	120.00

SHEET 1 OF 4 - LEGAL DESCRIPTION, BENCH MARK
SHEET 2 OF 4 - BENCHMARK INFORMATION, LEGEND & TRACT SUMMARY
SHEET 3 OF 4 - GENERAL TRACT & LOT BLOCK SUMMARY

18 EAST PLANT STREET
SUITE 200, ORANGE, FLORIDA 32838
(407) 884-8388
LB 88733

WATERMARK PHASE 1B

LOCATED IN SECTION 4, TOWNSHIP 24 SOUTH, RANGE 27 EAST
ORANGE COUNTY, FLORIDA



LOT	OWNER	ADDRESS	DATE	STATUS	REMARKS
29-1
29-2
29-3
29-4
29-5
29-6
29-7
29-8
29-9
29-10
29-11
29-12
29-13
29-14
29-15
29-16
29-17
29-18
29-19
29-20
29-21
29-22
29-23
29-24
29-25
29-26
29-27
29-28
29-29
29-30
29-31
29-32
29-33
29-34
29-35
29-36
29-37
29-38
29-39
29-40
29-41
29-42
29-43
29-44
29-45
29-46
29-47
29-48
29-49
29-50
29-51
29-52
29-53
29-54
29-55
29-56
29-57
29-58
29-59
29-60
29-61
29-62
29-63
29-64
29-65
29-66
29-67
29-68
29-69
29-70
29-71
29-72
29-73
29-74
29-75
29-76
29-77
29-78
29-79
29-80
29-81
29-82
29-83
29-84
29-85
29-86
29-87
29-88
29-89
29-90
29-91
29-92
29-93
29-94
29-95
29-96
29-97
29-98
29-99
29-100



SHEET 2 OF 6 - LEGAL DESCRIPTION, ADDRESS, AREA, & LOT AREA MAP
SHEET 3 OF 6 - SUBDIVISION FOR LEGAL & TRACT RECORDS
SHEET 4 OF 6 - LOT BLOC EASEMENT

LOT	AREA	PERCENT
1	1.00	1.00
2	1.00	1.00
3	1.00	1.00

LOT	OWNER	ADDRESS	DATE	STATUS	REMARKS
29-1
29-2
29-3
29-4
29-5
29-6
29-7
29-8
29-9
29-10
29-11
29-12
29-13
29-14
29-15
29-16
29-17
29-18
29-19
29-20
29-21
29-22
29-23
29-24
29-25
29-26
29-27
29-28
29-29
29-30
29-31
29-32
29-33
29-34
29-35
29-36
29-37
29-38
29-39
29-40
29-41
29-42
29-43
29-44
29-45
29-46
29-47
29-48
29-49
29-50
29-51
29-52
29-53
29-54
29-55
29-56
29-57
29-58
29-59
29-60
29-61
29-62
29-63
29-64
29-65
29-66
29-67
29-68
29-69
29-70
29-71
29-72
29-73
29-74
29-75
29-76
29-77
29-78
29-79
29-80
29-81
29-82
29-83
29-84
29-85
29-86
29-87
29-88
29-89
29-90
29-91
29-92
29-93
29-94
29-95
29-96
29-97
29-98
29-99
29-100

