



Interoffice Memorandum

APPROVED
BY ORANGE COUNTY BOARD
OF COUNTY COMMISSIONERS
JAN 27 2015 NP/RH

December 10, 2014

TO: Mayor Teresa Jacobs
and Board of County Commissioners

FROM: Mark V. Massaro, P.E., Director, Public Works Department

CONTACT PERSON: Ruby Dempsey Rozier, Manager *DRM*
Traffic Engineering

PHONE NUMBER: (407) 836-7890

SUBJ: Installation of Traffic Control Devices and "No Parking" Signs in Reserve at
Sawgrass Phase 3 (aka Yates PD Parcel 2 Phase 3-3)

Our staff recommends that the following traffic control devices be installed in Reserve at Sawgrass Phase 3 (aka Yates PD Parcel 2 Phase 3-3).

Install "STOP" signs on:

- Dune Stock Drive at Sawgrass Reserve Boulevard
- Dune Stock Drive at Stone Bark Trail
- Prairie Reserve Boulevard (N) at Stone Bark Trail
- Stone Bark Trail at Prairie Reserve Boulevard (S)
- Sawgrass Reserve Boulevard at Prairie Reserve Boulevard

The Fire Marshal recommends that the following "No Parking" signs be installed in Reserve at Sawgrass Phase 3 (aka Yates PD Parcel 2 Phase 3-3).

Install "NO PARKING" signs on:

- Dune Stock Drive
- Prairie Reserve Boulevard
- Sawgrass Reserve Boulevard

All signs will be installed upon receipt of a signed certificate of completion and conformation of street names and block numbers.

Action Requested: Approval of Traffic Control Devices and "No Parking" sign installations in Reserve at Sawgrass Phase 3 (aka Yates PD Parcel 2 Phase 3-3). District 4.

MVM/RDR/AHW/ns

Attachments

RESERVE AT SAWGRASS – PHASE 3
Situated in sections 19 and 20, Township 24 South, Range 30 East
ORANGE COUNTY, FLORIDA
DISTRICT # 4

STOP/STREET

(1)	(Ft E)	on Dune Stock Drive at Sawgrass Reserve Boulevard	100 12100
(2)	(Ft N)	on Dune Stock Drive at Stone Bark Trail	12100 12200
(3)	(Ft E)	on Prairie Reserve Boulevard (N) at Stone Bark Trail	4100 12100
(4)	(Ft S)	on Stone Bark Trail at Prairie Reserve Boulevard (S)	12300 3800
(5)	(Ft W)	on Sawgrass Reserve Boulevard at Prairie Reserve Boulevard	12300 4000

END OF ROAD TREATMENT

(6)	(FtN)	on Dune Stock Drive at Unsigned Street
(6)	(FtN)	on Dune Stock Drive at Unsigned Street
(6)	(FtN)	on Dune Stock Drive at Unsigned Street
(7)	(FtN)	on Stone Bark Trail at Prairie Reserve Boulevard
(7)	(FtN)	on Stone Bark Trail at Prairie Reserve Boulevard
(7)	(FtN)	on Stone Bark Trail at Prairie Reserve Boulevard

NO PARKING with arrows

(8)	on Dune Stock Drive from Stone Bark Trail extending north to end of road on the west side
(9)	on Prairie Reserve Boulevard (north leg) from Stone Bark Trail extending east to the curve on the south side and from the curve extending south to the curve on the west side and from curve extending west on the north side to Stone Bark Trail

(10)

on Sawgrass Reserve Boulevard from Stone Bark Trail extending east on the south side to Prairie Reserve Boulevard

**ahw/
12/10/2014**



PUBLIC WORKS DEPARTMENT
JOSEPH C. KUNKEL, P. E., *Deputy Director*
4200 South John Young Parkway ■ Orlando, Florida 32839-9205
407-836-7972 ■ Fax 407-836-7766
e-mail: Joe.Kunkel@ocfl.net

November 17, 2014

ORANGE COUNTY
NOV 20 2014
TRAFFIC ENGINEERING

Mr. Jeremy Camp
Beazer Homes
2600 Maitland Center Parkway, Suite 262
Maitland, Florida 32751

Subject: **Issuance of Certificate of Completion**
Yates PD Parcel 2 Phase 3-3

Dear Mr. Camp:

This letter verifies that on October 22, 2014 the County Engineer issued a Certificate of Completion for the construction of Yates PD Parcel 2 Phase 3-3, Plat Book 83, Pages 44-48, Orange County Records.

Please be advised that this certificate does not relieve the developer of responsibility for the materials, workmanship, structural integrity, functioning, and maintenance of the required public improvements during the one (1) year period following issuance of the Certificate of Completion, or at the time the County Engineer issues the Approval for Maintenance.

Sincerely,


Joseph C. Kunkel, P.E.

JCK/sa

Enclosure

cc: Robert Dudas, Utilities Distribution Section Manager
Jorge Reyes, Utilities Supervisor, Field Services Division
Brian Matejcek, Project Manager, Field Services Division
Brad Bell, Chief Utilities Inspector, Utilities Engineering Division
County Surveyor, Survey Section, Public Works Engineering Division
✓ Arthur Woods, Traffic Engineering Division
Maricela Torres, Roads and Drainage Division
David Gionet, Roads and Drainage Division (As-Built)
Mirian Haughee, Stormwater Management Division
Engineer of Record
SJR/SF Water Management District

CERTIFICATE OF COMPLETION

THIS IS TO CERTIFY THAT THE FACILITIES CONSTRUCTED BY:

DEVELOPER: Beazer Homes Corporation - Orlando

ADDRESS: c/o Jeremy Camp, 2600 Maitland Center Parkway, Suite 262, Maitland, FL 32751

IN THE DEVELOPMENT OF: Yates PD Parcel 2 Phase 3-3

PROJECT NUMBER: 13-S-015

S-T-R 20-24-30

AS RECORDED IN PLAT BOOK 83, PAGES 44-48, ORANGE COUNTY RECORDS HAVE BEEN COMPLETED IN FORM AND MANNER ACCEPTABLE FOR FUTURE MAINTENANCE BY ORANGE COUNTY, FLORIDA.

CONTRACTOR: Swell Construction Group

FACILITIES AND IMPROVEMENTS COMPLETE

REQUIRED DOCUMENTS

<u>YES</u>	<u>NOT REQUIRED</u>		<u>YES</u>	<u>NOT REQUIRED</u>	
X		STREETS	X		ENGINEER CERTIFICATION
X		DRAINAGE FACILITIES	X		SURVEYOR CERTIFICATION
X	OUC	WATER SYSTEM	X		LETTER OF CREDIT (Oct 30, 2015)
X		SANITARY SYSTEM		X	CASH GUARANTEE
X		RECLAIMED WATER SYSTEM	X		"AS-BUILT" DRAWINGS
	X	EXTERNAL SIDEWALKS		X	APPROVAL OF AUDIO-OVERRIDE DEVICE
	X	SCREENING	X		RETENTION POND MAINTENANCE GUARANTEE
X		ELECTRICAL SERVICE	X		UNDERDRAIN CERTIFICATION AND PERFORMANCE GUARANTEE
X		UNDERDRAINS	X		CERTIFIED UTILITY COST AND "BILL OF SALE"
X		ENVIRONMENTAL SWALES	X		PAYMENT FOR STREET AND TRAFFIC SIGNS
			X		VALUE OF TRANSFERRED PROPERTY FORM

ROADWAY CATEGORY

New Construction

Lane Miles

Roadway Type

- Arterial
- Collector
- Subdivision (local)
- Alternative Surface

- Single lane miles
- Single lane miles
- 1.81 Single lane miles
- Single lane miles

- Private
- Private
- Private
- Private

- Public
- Public
- Public
- Public

1.81 TOTAL LANE MILES

Frank A. Gallagher
 SENIOR INSPECTOR

[Signature]
 CHIEF ENGINEER

Jana M. Almodovar
 MANAGER, DEVELOPMENT ENGINEERING

[Signature]
 COUNTY ENGINEER, PUBLIC WORKS

RESERVE AT SAWGRASS - PHASE 3

Situated in Sections 19 and 20, Township 24 South, Range 30 East Orange County, Florida

Legal Description

PARCEL 1

A portion of Sections 19 and 20, Township 24 South, Range 30 East, Orange County, Florida, being more particularly described as follows:

BEGIN at the northeast corner of Lot 90, RESERVE AT SAWGRASS - PHASE 1, according to the plat thereof, as recorded in Plat Book 80, Pages 128 through 130, Public Records of Orange County, Florida; thence run N 89°08'58" E, a distance of 98.24 feet to a point of curvature of a curve, concave southeasterly, having a radius of 25.00 feet and a central angle of 90°00'00"; thence run southeasterly along the arc of said curve, a distance of 39.27 feet; thence run N 80°36'58" E, a distance of 50.56 feet; thence run S 00°51'02" E, a distance of 55.85 feet to a point of curvature of a curve, concave westerly, having a radius of 250.00 feet and a central angle of 127°17'15"; thence run southerly along the arc of said curve, a distance of 53.61 feet to the point of tangency thereof; thence run S 11°26'13" W, a distance of 56.34 feet to a point of curvature of a curve, concave easterly, having a radius of 150.00 feet and a central angle of 44°23'00"; thence run southerly along the arc of said curve, a distance of 116.20 feet to the point of tangency thereof; thence run S 32°56'51" E, a distance of 158.32 feet to a point of curvature of a curve, concave northerly, having a radius of 25.00 feet and a central angle of 113°56'35"; thence run easterly along the arc of said curve, a distance of 49.72 feet to a point of compound curvature of a curve, having a radius of 515.00 feet and a central angle of 28°55'58"; thence run northerly along the arc of said curve, a distance of 260.08 feet to a point; thence run S 85°49'23" E, a distance of 50.00 feet to a point on a non-tangent curve, concave northeasterly, having a radius of 25.00 feet; thence, on a chord bearing of S 35°35'56" E and a chord distance of 33.85 feet, run southeasterly along the arc of said curve, a distance of 37.32 feet, through a central angle of 85°31'25" to a point of compound curvature of a curve, having a radius of 175.00 feet and a central angle of 09°30'14"; thence run easterly along the arc of said curve, a distance of 38.03 feet to the point of tangency thereof; thence run N 80°08'58" E, a distance of 72.50 feet; thence run N 00°51'02" W, a distance of 122.50 feet; thence run N 80°16'58" E, a distance of 540.22 feet to a point on the east line of the West 1/2 of the Northwest 1/4 of said Section 20; thence run S 00°51'40" E, along the east line of the West 1/2 of the Northwest 1/4 of said Section 20, a distance of 1,452.16 feet to a point on the south line of the Northwest 1/4 of said Section 20; thence run S 89°52'11" W, along the south line of the Northwest 1/4 of said Section 20, a distance of 1,355.67 feet to the southeast corner of the Northwest 1/4 of said Section 19; thence departing said south line, run S 89°52'04" W, a distance of 125.02 feet to a point on the westerly line of the aforesaid plat RESERVE AT SAWGRASS - PHASE 1; thence run northerly, along said easterly line, the following courses and distances: run N 01°10'10" W, a distance of 59.30 feet to a point of curvature of a curve, concave southeasterly, having a radius of 25.00 feet and a central angle of 85°10'31"; thence run northerly, along the arc of said curve, a distance of 37.82 feet; thence run N 02°57'50" E, a distance of 50.50 feet to a point on a non-tangent curve, concave southerly, having a radius of 1,025.00 feet; thence, on a chord bearing of N 86°52'33" E and a chord distance of 93.42 feet, run easterly along the arc of said curve, a distance of 93.45 feet, through a central angle of 05°13'26"; thence run N 00°30'44" W, a distance of 128.65 feet; thence run N 04°01'48" E, a distance of 81.84 feet; thence run N 20°13'01" E, a distance of 132.46 feet; thence run N 38°31'23" E, a distance of 113.68 feet; thence run N 54°26'19" E, a distance of 116.53 feet; thence run N 57°33'08" E, a distance of 130.03 feet to a point on a non-tangent curve, concave northeasterly, having a radius of 200.00 feet; thence, on a chord bearing of N 33°28'02" W and a chord distance of 3.83 feet, run northerly along the arc of said curve, a distance of 3.62 feet, through a central angle of 01°02'23"; thence run N 32°56'51" W, a distance of 91.37 feet; thence run N 55°54'24" E, a distance of 50.01 feet to a point on a non-tangent curve, concave easterly, having a radius of 25.00 feet; thence, on a chord bearing of N 12°03'09" E and a chord distance of 35.36 feet, run northerly along the arc of said curve, a distance of 39.27 feet, through a central angle of 90°00'00"; thence run N 24°19'30" W, a distance of 50.58 feet; thence run N 57°03'09" E, a distance of 95.00 feet; thence run N 32°56'51" W, a distance of 232.00 feet; thence run N 28°13'17" W, a distance of 52.31 feet; thence run N 28°42'12" W, a distance of 52.25 feet; thence run N 12°48'08" W, a distance of 52.25 feet; thence run N 04°56'05" W, a distance of 52.25 feet; thence run N 12°31'59" E, a distance of 170.02 feet; thence run N 00°51'02" W, a distance of 85.00 feet to the POINT OF BEGINNING.

Containing 37.73 acres, more or less.

PARCEL 2

A portion of Section 20, Township 24 South, Range 30 East, Orange County, Florida, being more particularly described as follows:

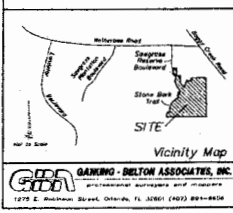
Commence at the northeast corner of Lot 90, RESERVE AT SAWGRASS - PHASE 1, according to the plat thereof, as recorded in Plat Book 80, Pages 128 through 130, Public Records of Orange County, Florida; thence run northeasterly, along the easterly line of said RESERVE AT SAWGRASS - PHASE 1, the following four (4) courses and distances: run S 89°08'58" W, a distance of 80.56 feet; then run N 01°22'31" E, a distance of 50.04 feet to the POINT OF BEGINNING; said point being a point on a non-tangent curve, concave northeasterly, having a radius of 25.00 feet; thence, on a chord bearing of N 40°58'14" W and a chord distance of 38.23 feet, run northeasterly along the arc of said curve, a distance of 43.53 feet, through a central angle of 89°45'37" to a point of reverse curvature of a curve, having a radius of 390.00 feet and a central angle of 26°31'00"; thence run northerly along the arc of said curve, a distance of 180.49 feet to a point of reverse curvature of a curve, having a radius of 25.00 feet and a central angle of 108°45'22"; thence departing the easterly line of said plat RESERVE AT SAWGRASS - PHASE 1, run northeasterly along the arc of said curve, a distance of 46.58 feet to the point of tangency thereof; thence run N 89°08'58" E, a distance of 102.30 feet to a point of curvature of a curve, concave northerly, having a radius of 325.00 feet and a central angle of 01°58'41"; thence run easterly, along the arc of said curve, a distance of 17.82 feet; thence run S 00°51'02" E, a distance of 240.30 feet; thence run S 89°08'58" W, a distance of 108.51 feet to the POINT OF BEGINNING.

Containing 0.73 acres, more or less.

*The properties delineated on this plat are subject to aircraft noise that may be objectionable.

THE PROPERTY SHOWN HEREON REPRESENTS A PORTION OF THE LOTS INCLUDED IN THE 1915 PLANNED DEVELOPMENT, PHASE 3, PRELIMINARY SUBDIVISION PLAN AS APPROVED BY THE ORANGE COUNTY BOARD OF COUNTY COMMISSIONERS ON JUNE 21, 2014 AND THE 1915 PLANNED DEVELOPMENT/PARTS PARCEL 2 PRELIMINARY SUBDIVISION PLAN NON-SUBSTANTIAL CHANGE AS APPROVED BY THE ORANGE COUNTY DEVELOPMENT REVIEW COMMITTEE ON MAY 8, 2012.

NOTICE:
THIS PLAT, AS RECORDED IN ITS GRAPHIC FORM IS THE OFFICIAL RECORD OF THE SURVEY LINED BOUNDARIES HEREON. NO OTHER INSTRUMENTS MAY BE SUPPLEMENTED BY ANY OTHER GRAPHIC OR DIGITAL FORM OF THE PLAT. THERE MAY BE ADDITIONAL INSTRUMENTS THAT ARE NOT RECORDED ON THIS PLAT THAT MAY BE FOUND IN THE PUBLIC RECORDS OF THIS COUNTY.



RESERVE AT SAWGRASS - PHASE 3
DEDICATION
KNOW ALL MEN BY THESE PRESENTS, that the undersigned being the owner in fee simple of the lands described in the foregoing caption to this plat, does hereby dedicate said lands and plat for the uses and purposes therein expressed and dedicates the streets, alleys, easements and public drainage easements shown thereon to the perpetual use of the public for the uses and purposes described in this plat.
Tracts "A", "B", and "C" (Drainage / Retention Tracts) are dedicated in fee simple to Orange County without any restriction whatsoever where Orange County ownership of Tracts "A", "B", and "C" and any improvements thereon vests upon approval of this plat by the Board of County Commissioners of Orange County, Florida. The recording of this plat in the Public Records of Orange County, Florida shall not constitute to the County, no further instrument shall be necessary in vest fee simple title in the County as aforementioned.
IN WITNESS WHEREOF, the owner has caused these presents to be signed and affixed to or otherwise by the Authorized Signatory named below this _____ day of _____, 2014.

BEAZER HOMES CORP.
a Tennessee corporation
By: *[Signature]*
Name: *Nick Gagner VP Land*
Title: *VP Land*

Signed and sealed in the presence of:
[Signatures]
Dallas Austin
Nora J. Schuster

STATE of Florida COUNTY of Orange
The foregoing instrument was acknowledged before me this 2 day of October, 2014, by Nick Gagner, VP Land of BEAZER HOMES CORP., a Tennessee corporation, on behalf of the corporation.
He is personally known to me (has produced an identification).
Notary Public: *[Signature]*
Print Name: *Nora J. Schuster*
My Commission Expires: *9/14/17*

CERTIFICATE OF REVIEW BY COUNTY SURVEYOR
This plat has been reviewed for conformity to Chapter 177 Florida Statutes.
[Signature] 10/1/14
County Surveyor's Signature Date

CERTIFICATE OF APPROVAL BY ZONING DIRECTOR
Examined and Approved: *[Signature]* 10-2-14
Zoning Director Date

CERTIFICATE OF APPROVAL BY COUNTY ENGINEER
Examined and Approved: *[Signature]* 10-2-14
County Engineer Date

CERTIFICATE OF APPROVAL BY THE BOARD OF COUNTY COMMISSIONERS
THIS IS TO CERTIFY that on *October 2, 2014* the foregoing plat was approved by the Board of County Commissioners of Orange County, Florida.
[Signature]
Clark of the Board of County Commissioners
By: *[Signature]* D.C.

CERTIFICATE OF SURVEYOR
This plat was prepared under my direction and supervision. This plat meets all of the survey requirements of Chapter 177, Florida Statutes.
[Signature] 10-1-14
Surveyor's Name: *M. CLAYTON GANNING*
GANNING - BELTON ASSOCIATES, INC.
Legal Entity's Name: *275 E. ROBINSON ST., ORLANDO, FLA. 32801*
Legal Entity's Address

CERTIFICATE OF COUNTY COMPTROLLER
I HEREBY CERTIFY that the foregoing plat was recorded in the Orange County Official Records on *10/19/14* as File No. *20140514552*
County Comptroller in and for Orange County, Florida
By: *[Signature]*

RESERVE AT SAWGRASS - PHASE 3

Situated in Sections 19 and 20, Township 24 South, Range 30 East
Orange County, Florida

* The properties delineated on this plat are subject to aircraft noise that may be objectionable.

Surveyor's Notes:

1. Bearings are based on the east line of the Northeast 1/4 of Section 19, Township 24 South, Range 30 East, Orange County, Florida, as shown, an assumed bearing of N 00°32'16" E.

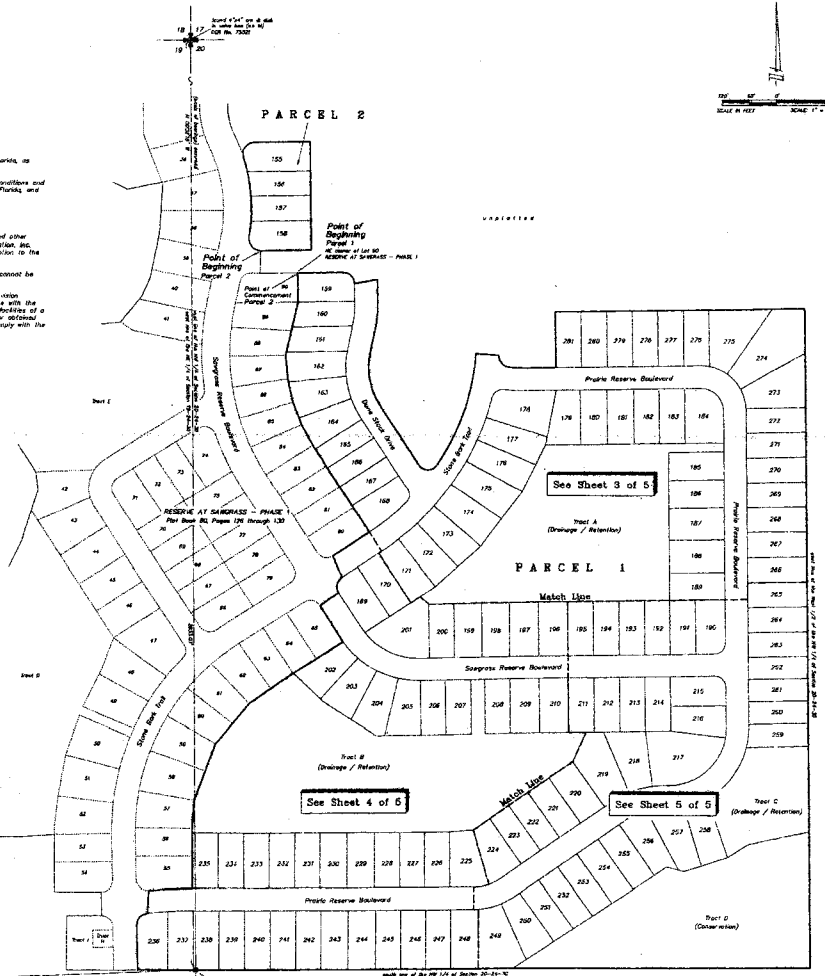
2. The following tract and easements comprise the common grant as more particularly defined in the Declaration of Covenants, Conditions and Restrictions of RESERVE AT SAWGRASS as recorded in Official Records Book 28466, Page 1844, Public Records of Orange County, Florida, and are hereby declared to and maintained by the Reserve at Sawgrass Homeowners' Association, Inc.:

Tract 1st (Conservation)
N.C.S.D. (Drainage Easement)

3. Tract 1st is to be owned and maintained by the Reserve at Sawgrass Homeowners' Association, Inc. for conservation purposes and other purposes not inconsistent with this declaration, and is the maintenance obligation of the Reserve at Sawgrass Homeowners' Association, Inc. Development rights in this Conservation Tract are reserved to Orange County, Florida, through the construction, clearing, grading or alteration to the Conservation Tract are permitted without prior approval of Orange County, Florida and all other applicable jurisdictional agencies.

4. Fencing within the Drainage Easements shown on the plat of RESERVE AT SAWGRASS - PHASE 3 is prohibited. This restriction cannot be removed without prior approval of Orange County, Florida.

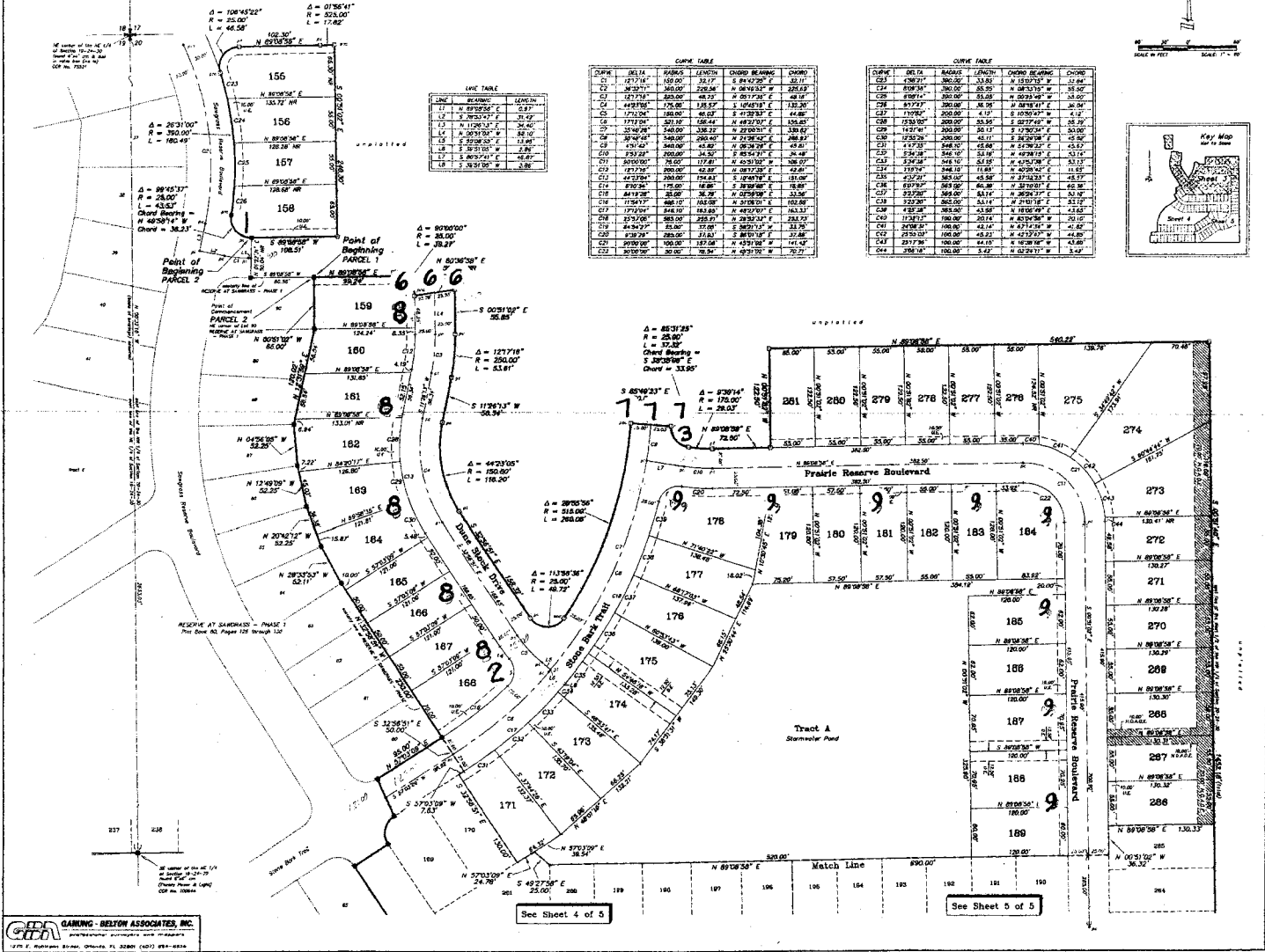
5. All graded utility easements shall also be easements for the construction, installation, maintenance, and operation of cable television service lines, however, no such construction, installation, maintenance, and operation of cable television service lines shall interfere with the installation, operation, or use of any electric, telephone, gas or other public utility, or the arrest or ejection of any garbage into the bodies of any public waterway. If such an event occurs, the person responsible for the same shall be liable to the Reserve at Sawgrass Homeowners' Association, Inc. for the cost of any such construction, installation, maintenance, and operation and comply with the National Electrical Safety Code as adopted by the Florida Public Service Commission (State Statute 377.001 (2)(c)).



LEGEND	
1 - 1" = 100'	
2 - utility lines	
3 - easement	
4 - easement	
5 - easement	
6 - easement	
7 - easement	
8 - easement	
9 - easement	
10 - easement	
11 - easement	
12 - easement	
13 - easement	
14 - easement	
15 - easement	
16 - easement	
17 - easement	
18 - easement	
19 - easement	
20 - easement	
21 - easement	
22 - easement	
23 - easement	
24 - easement	
25 - easement	
26 - easement	
27 - easement	
28 - easement	
29 - easement	
30 - easement	
31 - easement	
32 - easement	
33 - easement	
34 - easement	
35 - easement	
36 - easement	
37 - easement	
38 - easement	
39 - easement	
40 - easement	
41 - easement	
42 - easement	
43 - easement	
44 - easement	
45 - easement	
46 - easement	
47 - easement	
48 - easement	
49 - easement	
50 - easement	
51 - easement	
52 - easement	
53 - easement	
54 - easement	
55 - easement	
56 - easement	
57 - easement	
58 - easement	
59 - easement	
60 - easement	
61 - easement	
62 - easement	
63 - easement	
64 - easement	
65 - easement	
66 - easement	
67 - easement	
68 - easement	
69 - easement	
70 - easement	
71 - easement	
72 - easement	
73 - easement	
74 - easement	
75 - easement	
76 - easement	
77 - easement	
78 - easement	
79 - easement	
80 - easement	
81 - easement	
82 - easement	
83 - easement	
84 - easement	
85 - easement	
86 - easement	
87 - easement	
88 - easement	
89 - easement	
90 - easement	
91 - easement	
92 - easement	
93 - easement	
94 - easement	
95 - easement	
96 - easement	
97 - easement	
98 - easement	
99 - easement	
100 - easement	
101 - easement	
102 - easement	
103 - easement	
104 - easement	
105 - easement	
106 - easement	
107 - easement	
108 - easement	
109 - easement	
110 - easement	
111 - easement	
112 - easement	
113 - easement	
114 - easement	
115 - easement	
116 - easement	
117 - easement	
118 - easement	
119 - easement	
120 - easement	
121 - easement	
122 - easement	
123 - easement	
124 - easement	
125 - easement	
126 - easement	
127 - easement	
128 - easement	
129 - easement	
130 - easement	
131 - easement	
132 - easement	
133 - easement	
134 - easement	
135 - easement	
136 - easement	
137 - easement	
138 - easement	
139 - easement	
140 - easement	
141 - easement	
142 - easement	
143 - easement	
144 - easement	
145 - easement	
146 - easement	
147 - easement	
148 - easement	
149 - easement	
150 - easement	
151 - easement	
152 - easement	
153 - easement	
154 - easement	
155 - easement	
156 - easement	
157 - easement	
158 - easement	
159 - easement	
160 - easement	
161 - easement	
162 - easement	
163 - easement	
164 - easement	
165 - easement	
166 - easement	
167 - easement	
168 - easement	
169 - easement	
170 - easement	
171 - easement	
172 - easement	
173 - easement	
174 - easement	
175 - easement	
176 - easement	
177 - easement	
178 - easement	
179 - easement	
180 - easement	
181 - easement	
182 - easement	
183 - easement	
184 - easement	
185 - easement	
186 - easement	
187 - easement	
188 - easement	
189 - easement	
190 - easement	
191 - easement	
192 - easement	
193 - easement	
194 - easement	
195 - easement	
196 - easement	
197 - easement	
198 - easement	
199 - easement	
200 - easement	
201 - easement	
202 - easement	
203 - easement	
204 - easement	
205 - easement	
206 - easement	
207 - easement	
208 - easement	
209 - easement	
210 - easement	
211 - easement	
212 - easement	
213 - easement	
214 - easement	
215 - easement	
216 - easement	
217 - easement	
218 - easement	
219 - easement	
220 - easement	
221 - easement	
222 - easement	
223 - easement	
224 - easement	
225 - easement	
226 - easement	
227 - easement	
228 - easement	
229 - easement	
230 - easement	
231 - easement	
232 - easement	
233 - easement	
234 - easement	
235 - easement	
236 - easement	
237 - easement	
238 - easement	
239 - easement	
240 - easement	
241 - easement	
242 - easement	
243 - easement	
244 - easement	
245 - easement	
246 - easement	
247 - easement	
248 - easement	
249 - easement	
250 - easement	
251 - easement	
252 - easement	
253 - easement	
254 - easement	
255 - easement	
256 - easement	
257 - easement	
258 - easement	
259 - easement	
260 - easement	
261 - easement	
262 - easement	
263 - easement	
264 - easement	
265 - easement	
266 - easement	
267 - easement	
268 - easement	
269 - easement	
270 - easement	
271 - easement	
272 - easement	
273 - easement	
274 - easement	
275 - easement	
276 - easement	
277 - easement	
278 - easement	
279 - easement	
280 - easement	
281 - easement	
282 - easement	
283 - easement	
284 - easement	
285 - easement	
286 - easement	
287 - easement	
288 - easement	
289 - easement	
290 - easement	
291 - easement	
292 - easement	
293 - easement	
294 - easement	
295 - easement	
296 - easement	
297 - easement	
298 - easement	
299 - easement	
300 - easement	
301 - easement	
302 - easement	
303 - easement	
304 - easement	
305 - easement	
306 - easement	
307 - easement	
308 - easement	
309 - easement	
310 - easement	
311 - easement	
312 - easement	
313 - easement	
314 - easement	
315 - easement	
316 - easement	
317 - easement	
318 - easement	
319 - easement	
320 - easement	
321 - easement	
322 - easement	
323 - easement	
324 - easement	
325 - easement	
326 - easement	
327 - easement	
328 - easement	
329 - easement	
330 - easement	
331 - easement	
332 - easement	
333 - easement	
334 - easement	
335 - easement	
336 - easement	
337 - easement	
338 - easement	
339 - easement	
340 - easement	
341 - easement	
342 - easement	
343 - easement	
344 - easement	
345 - easement	
346 - easement	
347 - easement	
348 - easement	
349 - easement	
350 - easement	
351 - easement	
352 - easement	
353 - easement	
354 - easement	
355 - easement	
356 - easement	
357 - easement	
358 - easement	
359 - easement	
360 - easement	
361 - easement	
362 - easement	
363 - easement	
364 - easement	
365 - easement	
366 - easement	
367 - easement	
368 - easement	
369 - easement	
370 - easement	
371 - easement	
372 - easement	
373 - easement	
374 - easement	
375 - easement	
376 - easement	
377 - easement	
378 - easement	
379 - easement	
380 - easement	
381 - easement	
382 - easement	
383 - easement	
384 - easement	
385 - easement	
386 - easement	
387 - easement	
388 - easement	
389 - easement	
390 - easement	
391 - easement	
392 - easement	
393 - easement	
394 - easement	
395 - easement	
396 - easement	
397 - easement	
398 - easement	
399 - easement	
400 - easement	

RESERVE AT SAWGRASS - PHASE 3

Situated in Sections 19 and 20, Township 24 South, Range 30 East
Orange County, Florida

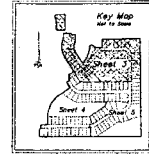


CURVE TABLE

Curve	Dist. to	Radius	Length	Chord Bearing	Chord
C1	17.74	150.00	33.37	S 84.02° E	33.11
C2	30.27	365.00	220.28	N 08.16° E	220.13
C3	12.71	85.00	48.23	N 02.17° E	48.11
C4	44.23	175.00	135.27	N 10.41° E	135.20
C5	171.24	385.00	46.02	S 47.22° E	46.00
C6	173.70	300.00	126.44	N 48.21° E	126.40
C7	35.46	140.00	336.22	N 23.00° E	336.02
C8	39.94	140.00	200.00	N 23.00° E	200.00
C9	131.42	340.00	43.80	N 06.28° E	43.81
C10	23.22	700.00	36.20	N 06.28° E	36.48
C11	30.00	70.00	177.81	N 02.51° E	178.07
C12	123.73	200.00	42.87	N 08.12° E	42.80
C13	42.33	300.00	75.43	S 02.00° E	75.00
C14	82.24	175.00	46.86	S 39.50° E	46.80
C15	84.78	70.00	76.20	N 02.00° E	75.50
C16	115.67	486.12	102.02	N 31.28° E	102.69
C17	172.00	340.00	83.60	N 40.21° E	83.37
C18	32.56	80.00	225.81	N 28.30° E	226.03
C19	41.24	25.00	127.85	S 30.71° E	128.20
C20	42.20	200.00	21.61	S 89.10° E	21.88
C21	39.00	100.00	137.58	N 43.91° E	141.47
C22	30.00	30.00	76.39	N 09.10° E	76.77

CURVE TABLE

Curve	Dist. to	Radius	Length	Chord Bearing	Chord
C23	42.02	300.00	33.84	N 12.01° W	33.84
C24	108.34	300.00	45.50	N 08.13° W	45.00
C25	107.14	300.00	45.50	N 02.13° W	45.00
C26	87.72	200.00	36.06	N 08.16° E	36.04
C27	170.00	200.00	4.17	E 89.04° W	4.12
C28	178.10	200.00	33.95	E 89.74° W	34.00
C29	142.70	200.00	30.13	E 12.50° W	30.00
C30	128.20	200.00	45.11	E 89.04° E	45.00
C31	42.73	248.10	45.88	N 54.22° E	45.87
C32	23.48	248.10	42.84	N 42.81° E	42.84
C33	23.48	248.10	54.10	N 42.81° E	53.73
C34	23.48	248.10	11.81	N 40.00° E	11.67
C35	42.73	248.10	45.50	E 23.22° E	45.00
C36	69.70	248.10	46.38	E 32.02° E	46.38
C37	22.20	248.10	54.14	N 26.22° E	54.00
C38	22.20	248.10	53.14	N 21.01° E	52.72
C39	22.20	248.10	33.80	N 10.00° E	33.63
C40	11.81	248.10	25.14	N 42.81° E	25.10
C41	22.20	100.00	42.74	N 47.13° W	42.87
C42	22.20	100.00	48.23	N 42.20° W	48.40
C43	22.20	100.00	44.10	N 10.28° W	43.80
C44	22.20	100.00	5.22	N 82.24° W	5.47



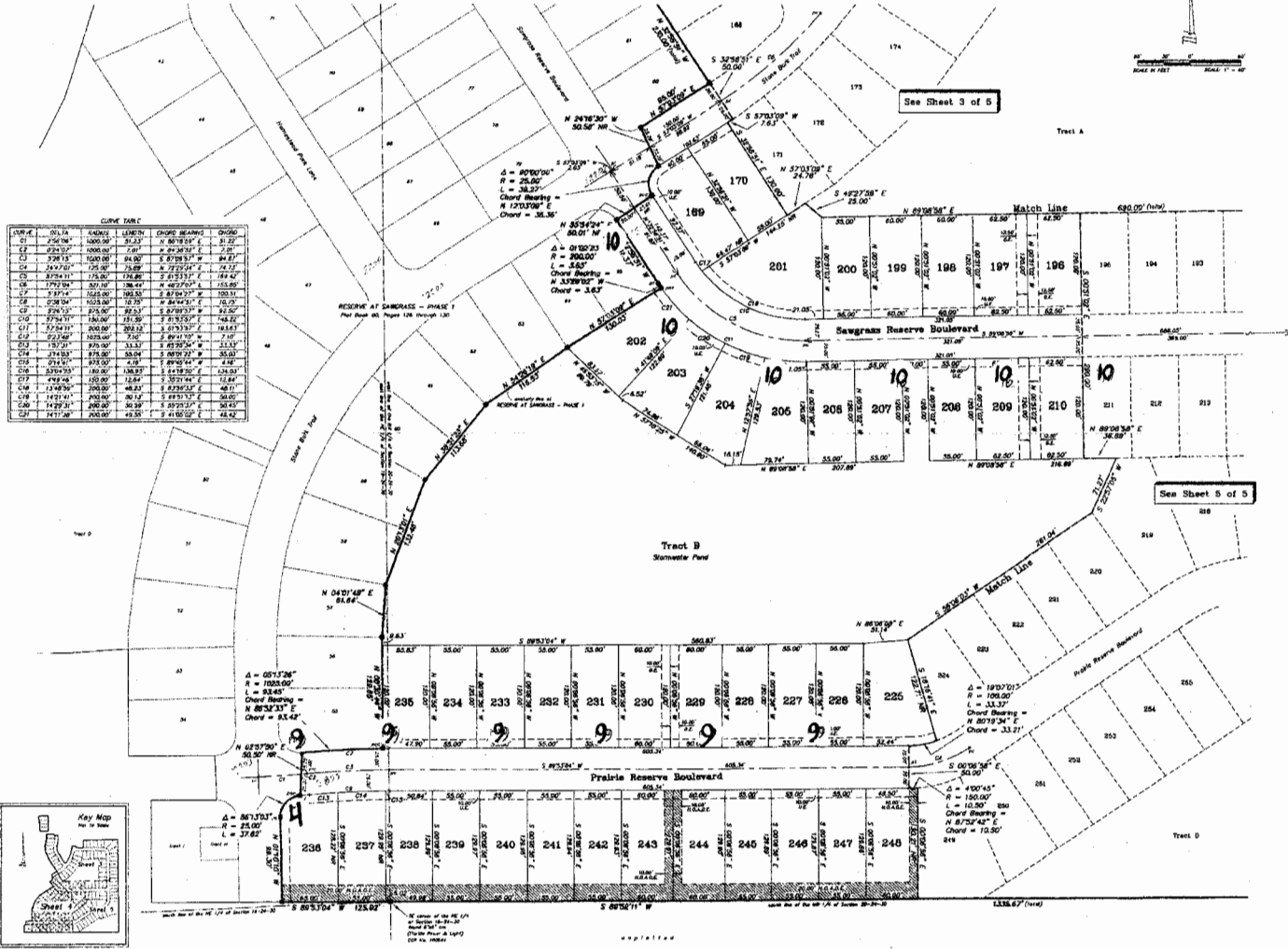
CDM GANNING-BELTON ASSOCIATES, INC.
 PROFESSIONAL ENGINEERS AND SURVEYORS
 1275 N. Holladay Blvd., Orlando, FL 32801 (407) 894-8844

See Sheet 4 of 5

See Sheet 5 of 5

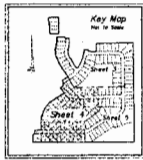
RESERVE AT SAWGRASS - PHASE 3

Situated in Sections 19 and 20, Township 24 South, Range 30 East
Orange County, Florida



CURVE TABLE

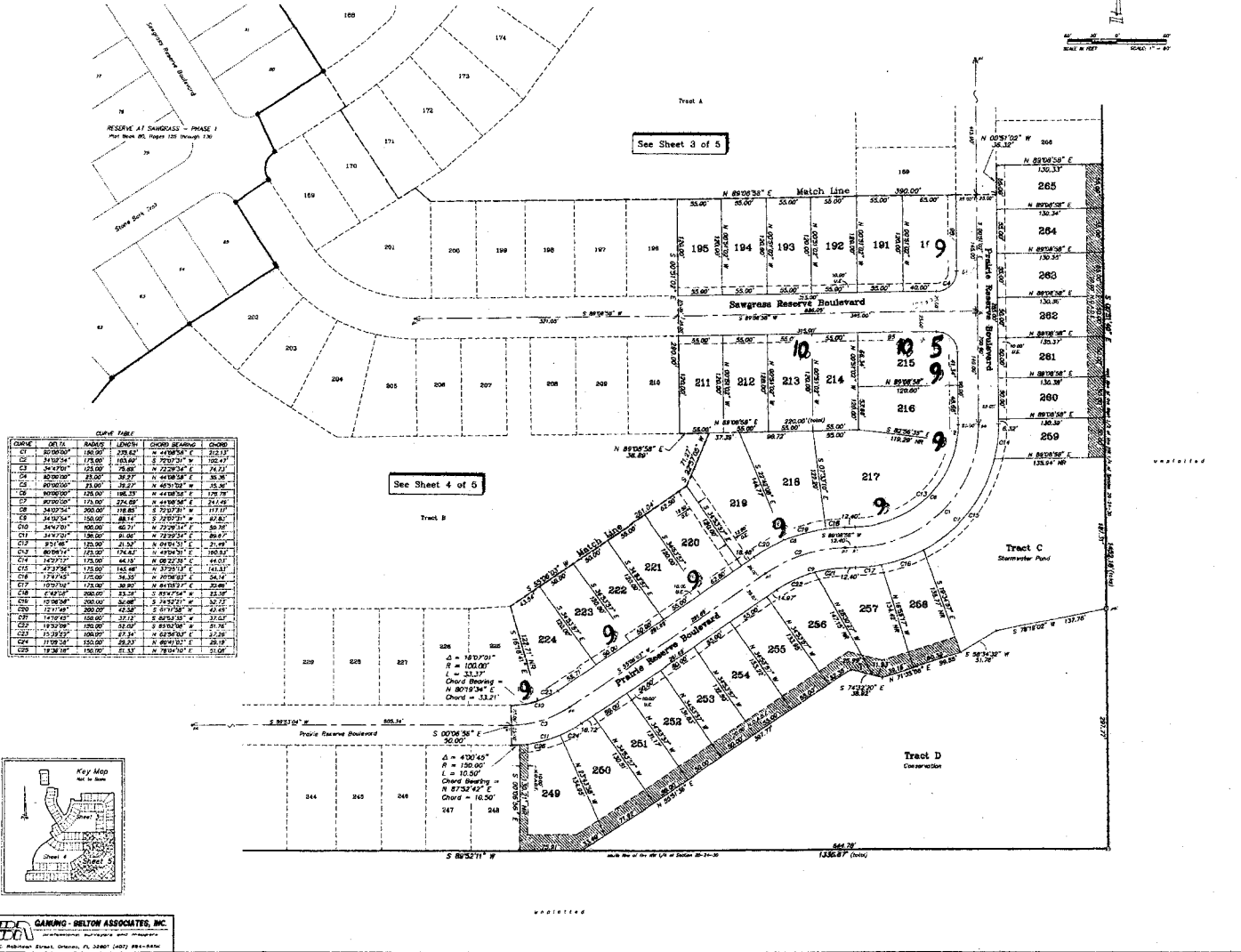
CURVE	CHORD	CHORD BEARING	CHORD	CHORD BEARING	CHORD
C1	252.18	N 80°12'30" E	252.18	N 80°12'30" E	252.18
C2	252.18	N 80°12'30" E	252.18	N 80°12'30" E	252.18
C3	252.18	N 80°12'30" E	252.18	N 80°12'30" E	252.18
C4	252.18	N 80°12'30" E	252.18	N 80°12'30" E	252.18
C5	252.18	N 80°12'30" E	252.18	N 80°12'30" E	252.18
C6	252.18	N 80°12'30" E	252.18	N 80°12'30" E	252.18
C7	252.18	N 80°12'30" E	252.18	N 80°12'30" E	252.18
C8	252.18	N 80°12'30" E	252.18	N 80°12'30" E	252.18
C9	252.18	N 80°12'30" E	252.18	N 80°12'30" E	252.18
C10	252.18	N 80°12'30" E	252.18	N 80°12'30" E	252.18
C11	252.18	N 80°12'30" E	252.18	N 80°12'30" E	252.18
C12	252.18	N 80°12'30" E	252.18	N 80°12'30" E	252.18
C13	252.18	N 80°12'30" E	252.18	N 80°12'30" E	252.18
C14	252.18	N 80°12'30" E	252.18	N 80°12'30" E	252.18
C15	252.18	N 80°12'30" E	252.18	N 80°12'30" E	252.18
C16	252.18	N 80°12'30" E	252.18	N 80°12'30" E	252.18
C17	252.18	N 80°12'30" E	252.18	N 80°12'30" E	252.18
C18	252.18	N 80°12'30" E	252.18	N 80°12'30" E	252.18
C19	252.18	N 80°12'30" E	252.18	N 80°12'30" E	252.18
C20	252.18	N 80°12'30" E	252.18	N 80°12'30" E	252.18
C21	252.18	N 80°12'30" E	252.18	N 80°12'30" E	252.18
C22	252.18	N 80°12'30" E	252.18	N 80°12'30" E	252.18
C23	252.18	N 80°12'30" E	252.18	N 80°12'30" E	252.18
C24	252.18	N 80°12'30" E	252.18	N 80°12'30" E	252.18
C25	252.18	N 80°12'30" E	252.18	N 80°12'30" E	252.18
C26	252.18	N 80°12'30" E	252.18	N 80°12'30" E	252.18
C27	252.18	N 80°12'30" E	252.18	N 80°12'30" E	252.18
C28	252.18	N 80°12'30" E	252.18	N 80°12'30" E	252.18
C29	252.18	N 80°12'30" E	252.18	N 80°12'30" E	252.18
C30	252.18	N 80°12'30" E	252.18	N 80°12'30" E	252.18
C31	252.18	N 80°12'30" E	252.18	N 80°12'30" E	252.18
C32	252.18	N 80°12'30" E	252.18	N 80°12'30" E	252.18
C33	252.18	N 80°12'30" E	252.18	N 80°12'30" E	252.18
C34	252.18	N 80°12'30" E	252.18	N 80°12'30" E	252.18
C35	252.18	N 80°12'30" E	252.18	N 80°12'30" E	252.18
C36	252.18	N 80°12'30" E	252.18	N 80°12'30" E	252.18
C37	252.18	N 80°12'30" E	252.18	N 80°12'30" E	252.18
C38	252.18	N 80°12'30" E	252.18	N 80°12'30" E	252.18
C39	252.18	N 80°12'30" E	252.18	N 80°12'30" E	252.18
C40	252.18	N 80°12'30" E	252.18	N 80°12'30" E	252.18
C41	252.18	N 80°12'30" E	252.18	N 80°12'30" E	252.18
C42	252.18	N 80°12'30" E	252.18	N 80°12'30" E	252.18
C43	252.18	N 80°12'30" E	252.18	N 80°12'30" E	252.18
C44	252.18	N 80°12'30" E	252.18	N 80°12'30" E	252.18
C45	252.18	N 80°12'30" E	252.18	N 80°12'30" E	252.18
C46	252.18	N 80°12'30" E	252.18	N 80°12'30" E	252.18
C47	252.18	N 80°12'30" E	252.18	N 80°12'30" E	252.18
C48	252.18	N 80°12'30" E	252.18	N 80°12'30" E	252.18
C49	252.18	N 80°12'30" E	252.18	N 80°12'30" E	252.18
C50	252.18	N 80°12'30" E	252.18	N 80°12'30" E	252.18
C51	252.18	N 80°12'30" E	252.18	N 80°12'30" E	252.18
C52	252.18	N 80°12'30" E	252.18	N 80°12'30" E	252.18
C53	252.18	N 80°12'30" E	252.18	N 80°12'30" E	252.18
C54	252.18	N 80°12'30" E	252.18	N 80°12'30" E	252.18
C55	252.18	N 80°12'30" E	252.18	N 80°12'30" E	252.18
C56	252.18	N 80°12'30" E	252.18	N 80°12'30" E	252.18
C57	252.18	N 80°12'30" E	252.18	N 80°12'30" E	252.18
C58	252.18	N 80°12'30" E	252.18	N 80°12'30" E	252.18
C59	252.18	N 80°12'30" E	252.18	N 80°12'30" E	252.18
C60	252.18	N 80°12'30" E	252.18	N 80°12'30" E	252.18
C61	252.18	N 80°12'30" E	252.18	N 80°12'30" E	252.18
C62	252.18	N 80°12'30" E	252.18	N 80°12'30" E	252.18
C63	252.18	N 80°12'30" E	252.18	N 80°12'30" E	252.18
C64	252.18	N 80°12'30" E	252.18	N 80°12'30" E	252.18
C65	252.18	N 80°12'30" E	252.18	N 80°12'30" E	252.18
C66	252.18	N 80°12'30" E	252.18	N 80°12'30" E	252.18
C67	252.18	N 80°12'30" E	252.18	N 80°12'30" E	252.18
C68	252.18	N 80°12'30" E	252.18	N 80°12'30" E	252.18
C69	252.18	N 80°12'30" E	252.18	N 80°12'30" E	252.18
C70	252.18	N 80°12'30" E	252.18	N 80°12'30" E	252.18
C71	252.18	N 80°12'30" E	252.18	N 80°12'30" E	252.18
C72	252.18	N 80°12'30" E	252.18	N 80°12'30" E	252.18
C73	252.18	N 80°12'30" E	252.18	N 80°12'30" E	252.18
C74	252.18	N 80°12'30" E	252.18	N 80°12'30" E	252.18
C75	252.18	N 80°12'30" E	252.18	N 80°12'30" E	252.18
C76	252.18	N 80°12'30" E	252.18	N 80°12'30" E	252.18
C77	252.18	N 80°12'30" E	252.18	N 80°12'30" E	252.18
C78	252.18	N 80°12'30" E	252.18	N 80°12'30" E	252.18
C79	252.18	N 80°12'30" E	252.18	N 80°12'30" E	252.18
C80	252.18	N 80°12'30" E	252.18	N 80°12'30" E	252.18
C81	252.18	N 80°12'30" E	252.18	N 80°12'30" E	252.18
C82	252.18	N 80°12'30" E	252.18	N 80°12'30" E	252.18
C83	252.18	N 80°12'30" E	252.18	N 80°12'30" E	252.18
C84	252.18	N 80°12'30" E	252.18	N 80°12'30" E	252.18
C85	252.18	N 80°12'30" E	252.18	N 80°12'30" E	252.18
C86	252.18	N 80°12'30" E	252.18	N 80°12'30" E	252.18
C87	252.18	N 80°12'30" E	252.18	N 80°12'30" E	252.18
C88	252.18	N 80°12'30" E	252.18	N 80°12'30" E	252.18
C89	252.18	N 80°12'30" E	252.18	N 80°12'30" E	252.18
C90	252.18	N 80°12'30" E	252.18	N 80°12'30" E	252.18
C91	252.18	N 80°12'30" E	252.18	N 80°12'30" E	252.18
C92	252.18	N 80°12'30" E	252.18	N 80°12'30" E	252.18
C93	252.18	N 80°12'30" E	252.18	N 80°12'30" E	252.18
C94	252.18	N 80°12'30" E	252.18	N 80°12'30" E	252.18
C95	252.18	N 80°12'30" E	252.18	N 80°12'30" E	252.18
C96	252.18	N 80°12'30" E	252.18	N 80°12'30" E	252.18
C97	252.18	N 80°12'30" E	252.18	N 80°12'30" E	252.18
C98	252.18	N 80°12'30" E	252.18	N 80°12'30" E	252.18
C99	252.18	N 80°12'30" E	252.18	N 80°12'30" E	252.18
C100	252.18	N 80°12'30" E	252.18	N 80°12'30" E	252.18



GAHAWING - BELTON ASSOCIATES, INC.
Professional Surveyors and Engineers
1278 E. Robinson Street, Orlando, FL 32801 (407) 881-8888

RESERVE AT SAWGRASS - PHASE 3

Situated in Sections 19 and 20, Township 24 South, Range 30 East
Orange County, Florida



GARDING - NELSON ASSOCIATES, INC.
1978 E. Robinson Street, Orlando, FL 32807 (407) 261-1616