



Interoffice Memorandum

AM

12-08-14A11:03 RCVD

12-08-14A11:07 RCVD

DATE: December 5, 2014

TO: Katie A. Smith, Deputy Clerk of the Board of County Commissioners, County Comptroller's Office

THROUGH: Cheryl Gillespie, Supervisor, Agenda Development Office

FROM: Lisette M. Egipciaco, Development Coordinator Planning Division

CONTACT PERSONS: Lourdes O'Farrill
Development Coordinator
Planning Division 407-836-5686
Lourdes.O'Farrill@ocfl.net
&
Lisette M. Egipciaco
Development Coordinator
Planning Division 407-836-5684
Lisette.Egipciaco@ocfl.net

SUBJECT: Request for Board of County Commissioners Public Hearing

Jmo

Project Name: Ruby Lake PD / Ruby Lake PSP – Substantial Change - Case # CDR-14-09-266

Type of Hearing: Substantial Change

Applicant(s): Ms. Rebecca Wilson
Lowndes, Drosdick, Doster, Kantor & Reed, P.A.
215 North Eola Drive
Orlando, Florida 32801

Commission District: 1

General Location: West of Marbella Palms Court / South of Palm Parkway

*01/06/15
@ 2 p.m.*

Parcel ID #: 15-24-28-5120-00-020
of Posters: 0
Use: 300 Hotel Rooms
Size / Acreage: 270.99 (total PSP) / 5.51 (Lot 2)
BCC Public Hearing
Required by: Sections 34-69 and 30-89, Orange County Code

Clerk's Advertising
Requirements: (1) At least 7 days before the BCC public hearing date, publish an advertisement in the Legal Notices section of *The Orlando Sentinel* describing the particular request, the general location of the subject property, and the date, time, and place when the BCC public hearing will be held;

And

(2) At least 7 days before the BCC public hearing date, send notices of BCC public hearing by U.S. mail to owners of property abutting and surrounding the subject property.

Spanish Contact Person: Para más información referente a esta vista pública, favor de comunicarse con la División de Planificación (Planning Division) al número 407-836-5686.

Material Provided:

- (1) Names and last known addresses of property owners (*via email from Fiscal and Operational Support Division*);
- (2) Location map (*to be mailed to property owners*);
- (3) Site plan sheet (*to be mailed to property owners*).

SPECIAL INSTRUCTIONS TO CLERK (IF ANY):

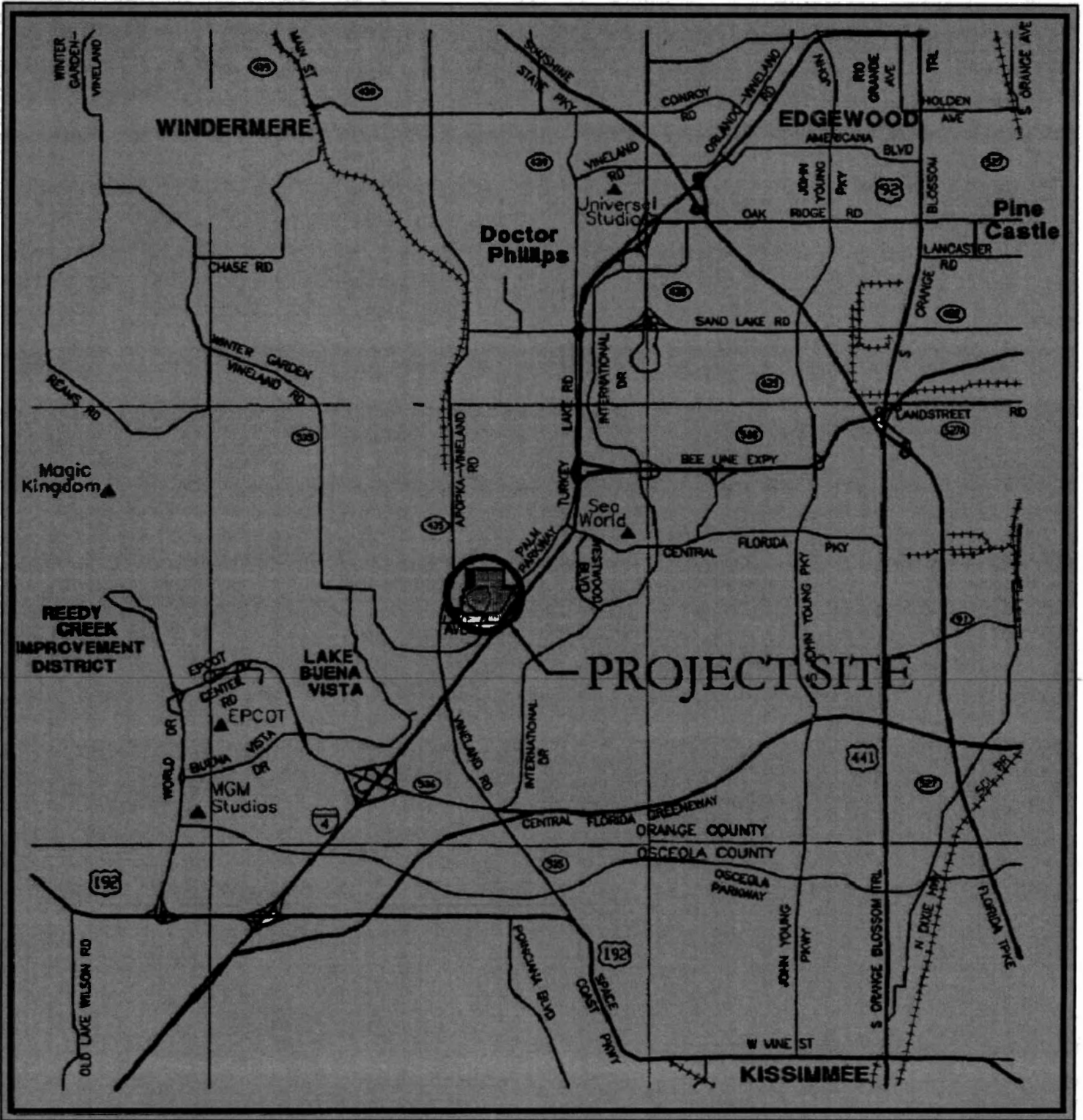
Please include the following information in the Notice to Abutters - This request is proposing a substantial change to the Ruby Lake PD / Ruby Lake PSP to convert 300,000 square feet of office for hotel use (up to 300 hotel rooms) on Lot 2 of the PSP, and to correct Lot 2 area to 5.51 acres; District 1; West of Marbella Palms Court / South of Palm Parkway.

Unless stated otherwise, the public hearing should be advertised to begin at 2:00 p.m., or as soon thereafter as the matter may be heard.

Please notify Lourdes O'Farrill and Lisette Egipciano of the scheduled date and time. The Planning Division will notify the applicant.

Attachments (location map and site plan sheet)

c: Chris R. Testerman, AICP, Assistant County Administrator



For questions regarding this map, please call Lisette Egipciaco at 407.836.5684 Or Lourdes O'Farrill at 407-836-5686

LOCATION MAP



NORTH

DATE: 12-03-14
DRAWN: JR
CHECKED: RZ

EXH1

PROJECT NO: 2014.139

**RUBY LAKE PD
RUBY LAKE PSP
ORANGE COUNTY, FLORIDA**

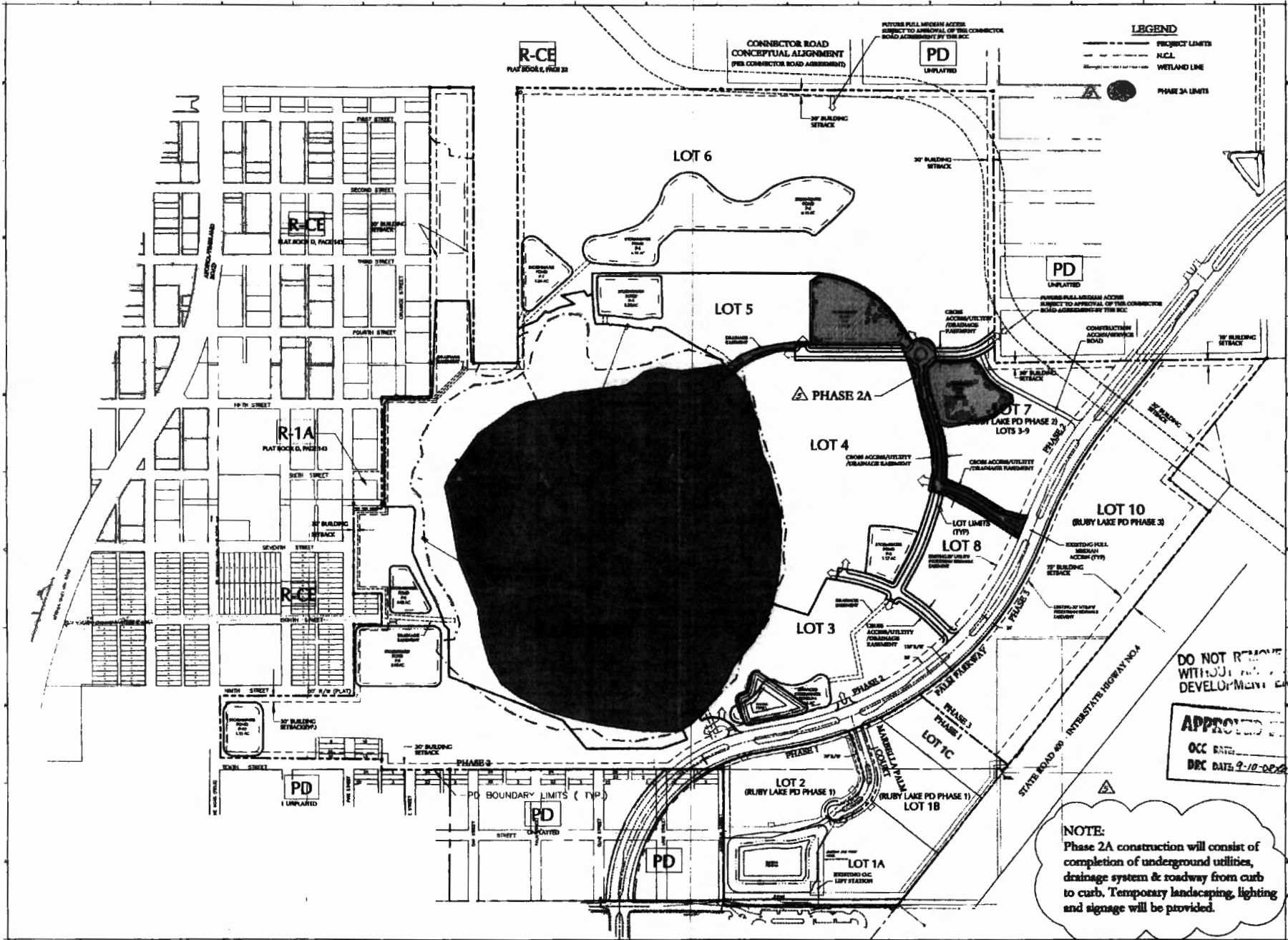
Z DEVELOPMENT
services

CA 29354

708 E. COLONIAL DRIVE
ORLANDO, FL 32803

PH: (407) 271-8910
FAX: (407) 442-0604

DATE: 9/13/2005
 TIME: 10:00 AM
 DRAWN BY: JRM
 CHECKED BY: SGE
 APPROVED BY: RLD



LEGEND

---	PROJECT LIMITS
---	N.C.L.
---	WETLAND LINE
---	PHASE 2A LIMITS

KEY MAP

NO. DATE: SEPTEMBER 2005
 JOB NO.: 05-0074.1600
 DESIGNED BY: SGE, RAS
 DRAWN BY: JRM
 CHECKED BY: SGE
 APPROVED BY: RLD
 SCALE IN FEET: 1" = 40'

DATE: SEPTEMBER 2005
 JOB NO.: 05-0074.1600
 DESIGNED BY: SGE, RAS
 DRAWN BY: JRM
 CHECKED BY: SGE
 APPROVED BY: RLD
 SCALE IN FEET: 1" = 40'

RUBY LAKE PRELIMINARY SUBDIVISION PLAN

ORANGE COUNTY, FLORIDA
 COUNTY ENGINEER
 APPROVED FOR THE COUNTY ENGINEER
 DATE: 9-13-2005

DO NOT REMOVE THIS FROM THE SITE PLAN WITHOUT THE COUNTY ENGINEER'S APPROVAL

APPROVED
 OCC DATE: 9-13-2005
 DEC DATE: 9-13-2005

NOTE:
 Phase 2A construction will consist of completion of underground utilities, drainage system & roadway from curb to curb. Temporary landscaping, lighting and signage will be provided.

RECEIVED
 SEP 13 2005

