



Interoffice Memorandum

APPROVED
BY ORANGE COUNTY BOARD
OF COUNTY COMMISSIONERS

September 26, 2014

OCT 21 2014 NP/KH

TO: Mayor Teresa Jacobs
and Board of County Commissioners

FROM: Mark V. Massaro, P. E., Director, Public Works Department

CONTACT PERSON: **Ruby Dempsey Rozier, Manager**
Traffic Engineering Division

PHONE NUMBER: (407) 836-7890

SUBJ: **Establishment of a "No Parking" Zone on the South Side of Rose Park Drive from Apopka Vineland Road Extending East 650 Feet**

Orange County Parks & Recreation Division has requested that a "No Parking" zone be installed on the south side of Rose Park Drive from Apopka Vineland Road extending east 650 feet.

Rose Park Drive is the entrance road to the Valencia Hills community and to Rose Place Park, an 18 acre county park with playground and open space areas. The parking of vehicles on both sides of Rose Park Drive during pick-up and drop-off times for sports practice creates a hazard to motorists and pedestrians. In an effort to relieve parking congestion on the roadway, Parks and Recreation has recently added more parking spaces at the intersection of Old Winter Garden Road and Apopka Vineland Road eliminating the need for on-street parking on both sides of Rose Park Drive.

Staff recommends that the Board approve the establishment of a "No Parking" zone on the south side of Rose Park Drive from Apopka Vineland Road extending east 650 feet.

Action Requested: Approval to install a "No Parking" Zone on the south side of Rose Park Drive from Apopka Vineland Road extending east 650 feet. District 1.

MVM/RDR/KMB/ns

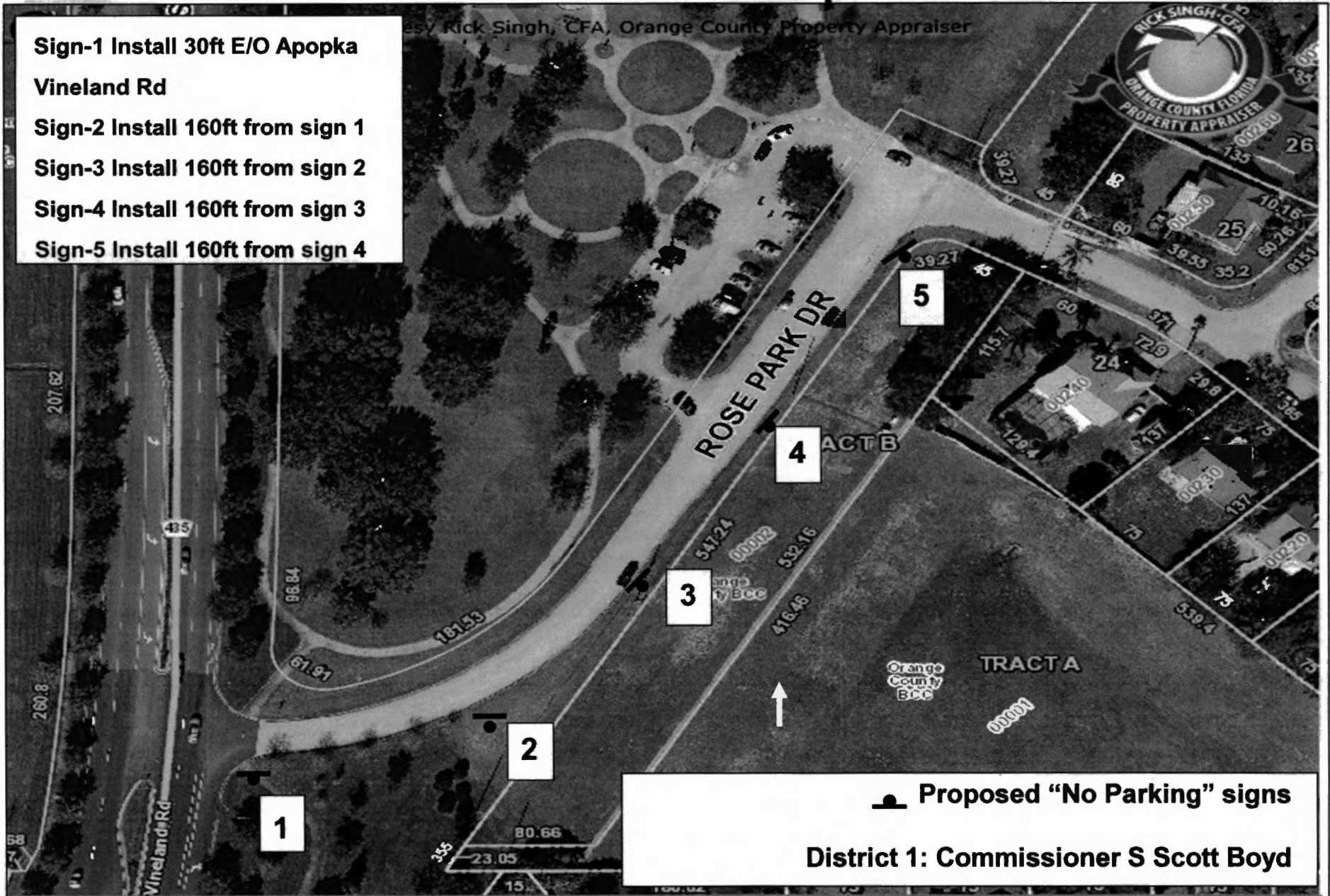
Attachments



Rose Park Drive Consent Agenda Location Map



- Sign-1 Install 30ft E/O Apopka Vineland Rd
- Sign-2 Install 160ft from sign 1
- Sign-3 Install 160ft from sign 2
- Sign-4 Install 160ft from sign 3
- Sign-5 Install 160ft from sign 4





Rose Park Drive Consent Agenda District Map



District 1 : Commissioner S Scott Boyd