

| DATE | | BY | | DESCRIPTION | |
|------|--|----|--|-------------|--|
| | | | | | |

| DATE | | BY | | DESCRIPTION | |
|------|--|----|--|-------------|--|
| | | | | | |

Vanasse Hangen Brustlin, Inc.
 Transportation, Land Development,
 Environmental Services
 225 E. Robinson Street, Suite 300
 Orlando, FL 32801 (407) 839-4006
 Certificate of Authorization # 3932
 Mark F. Bertolucci, P.E.
 PE # 63437

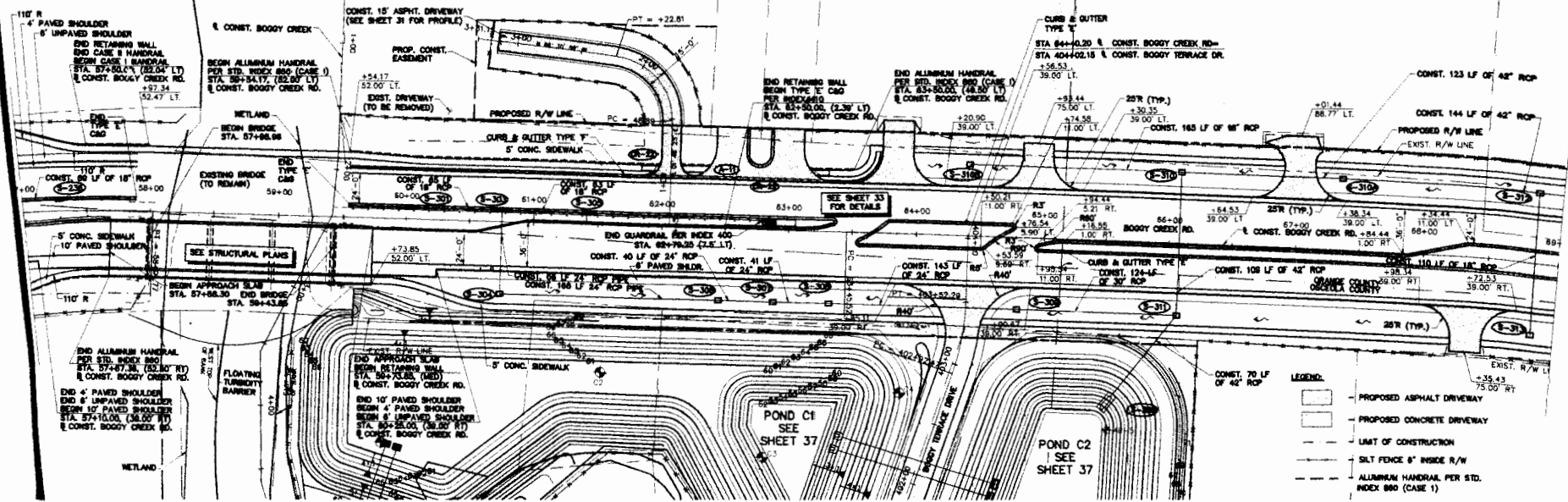


OSCEOLA COUNTY
 ENGINEERING DEPARTMENT
 BOGGY CREEK ROADWAY WIDENING

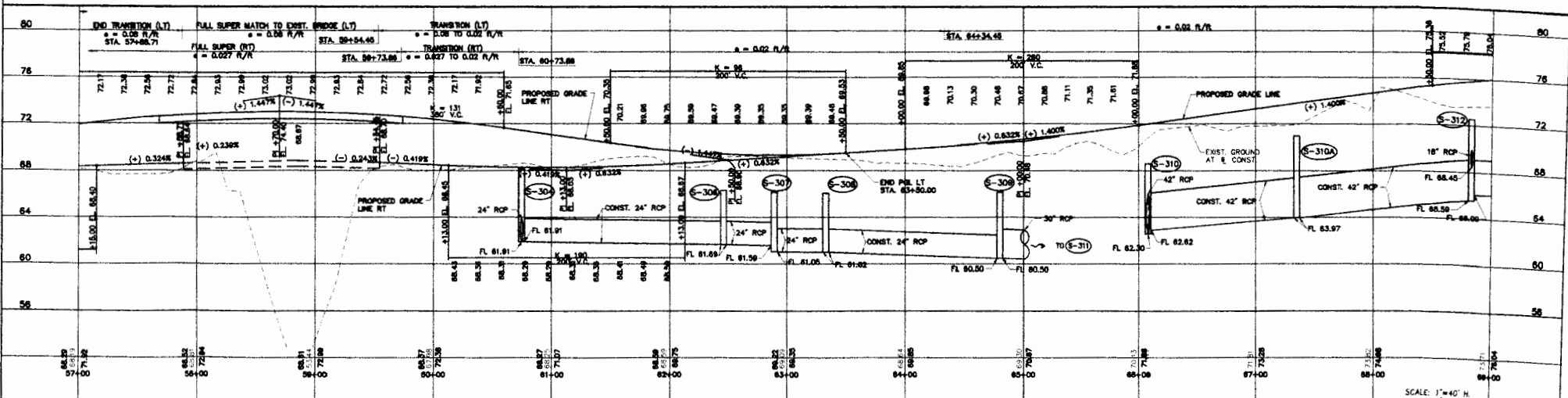
BOGGY CREEK ROAD
 PLAN AND PROFILE
 STA. 45+00.00 TO STA. 57+00.00

SHEET NO.
 25

2014-08-05, PUBLIC COMMENT, MARY WILSON



- LEGEND:**
- PROPOSED ASPHALT DRIVEWAY
 - PROPOSED CONCRETE DRIVEWAY
 - LIMIT OF CONSTRUCTION
 - SILT FENCE 6" INSIDE R/W
 - ALUMINUM HANDRAIL PER STD. INDEX 860 (CASE 1)



| REVISIONS | | | |
|-----------|----|-------------|--|
| DATE | BY | DESCRIPTION | |
| | | | |
| | | | |

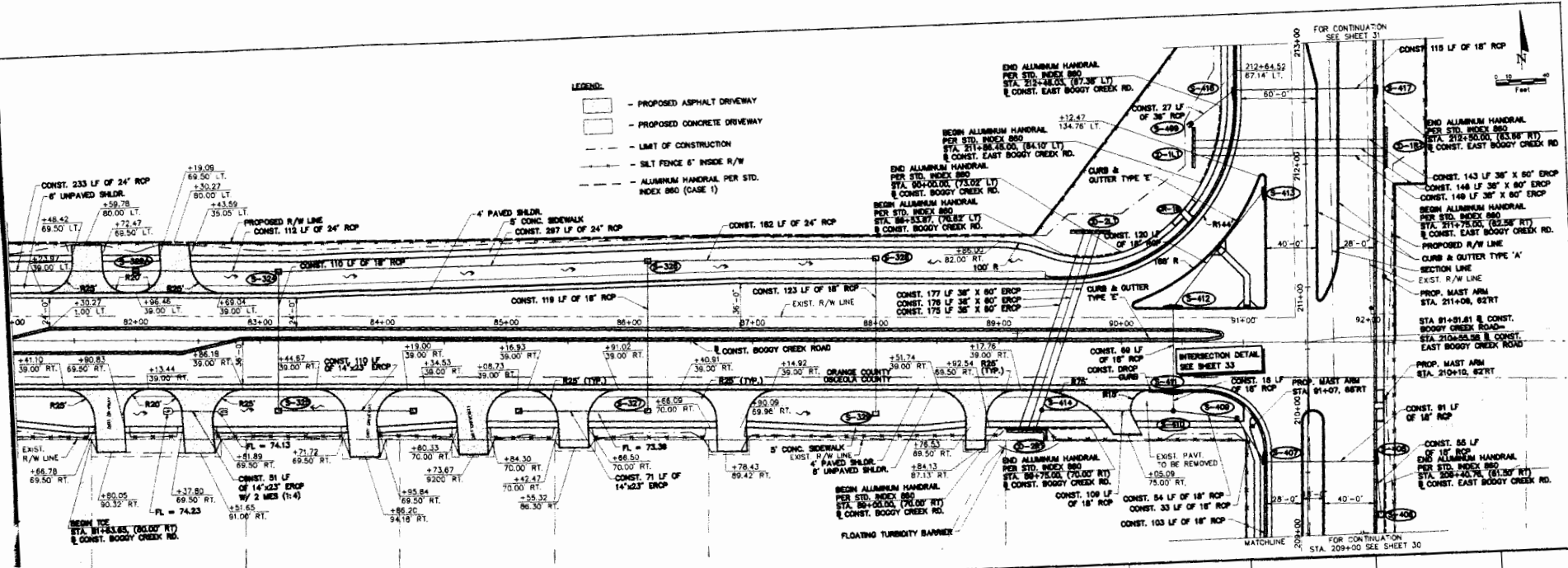
Vanasse Hangen Brustlin, Inc.
 Transportation, Land Development,
 Environmental Services
 225 E. Robinson Street, Suite 300
 Orlando, FL 32801 | 407.735-4000
 Certificate of Authorization # 3932
 Mark F. Bertoni, P.E.
 PE # 63437



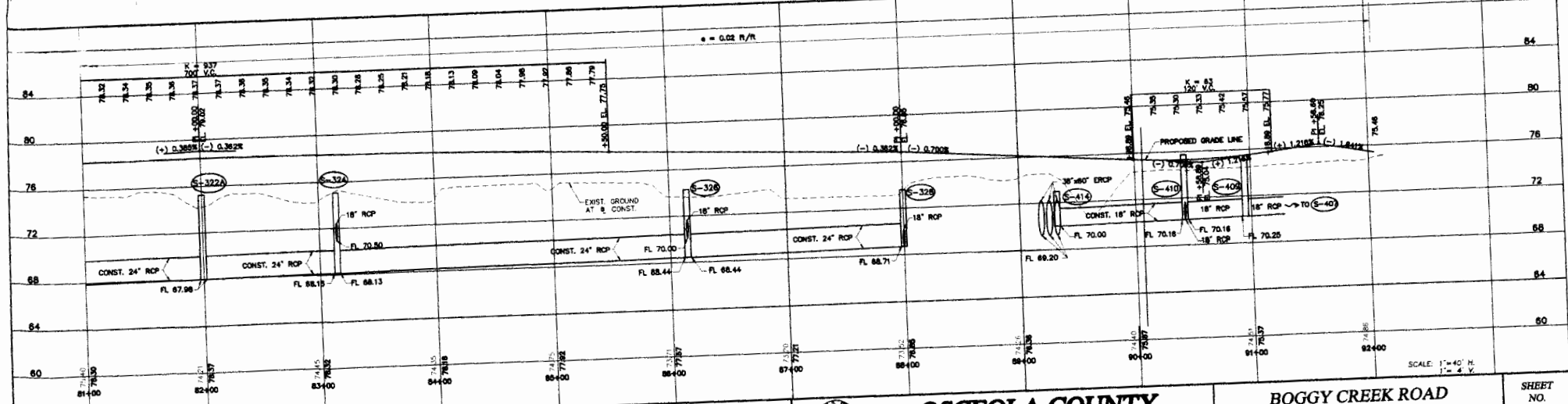
OSCEOLA COUNTY
 ENGINEERING DEPARTMENT
 BOGGY CREEK ROADWAY WIDENING

BOGGY CREEK ROAD
 PLAN AND PROFILE
 STA. 57+00.00 TO STA. 69+00.00

SHEET NO.
26



- LEGEND:**
- PROPOSED ASPHALT DRIVEWAY
 - PROPOSED CONCRETE DRIVEWAY
 - LIMIT OF CONSTRUCTION
 - SILT FENCE 6" INSIDE R/W
 - ALUMINUM HANDRAIL PER STD. INDEX 880



| REVISIONS | | | | | |
|-----------|----|-------------|------|----|-------------|
| DATE | BY | DESCRIPTION | DATE | BY | DESCRIPTION |
| | | | | | |

Vanasse Hangen Brustlin, Inc.
 Transportation, Land Development,
 Environmental Services
 225 E. Robinson Street, Suite 300
 Orlando, FL 32801 (407) 830-4006
 Certificate of Authorization # 3932
 Mark F. Bertanocini, P.E.
 PE # 63437

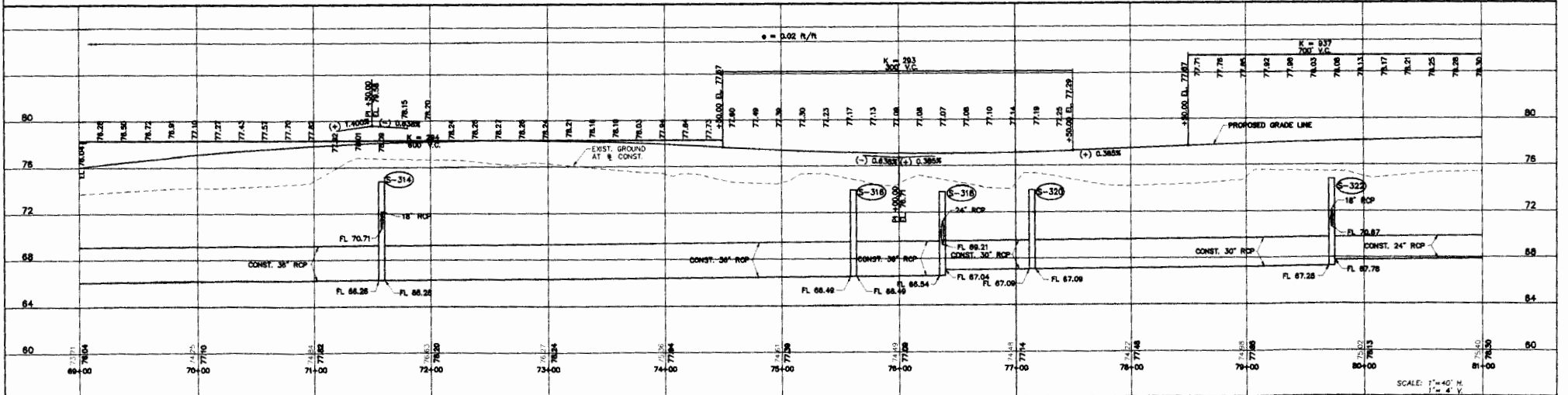
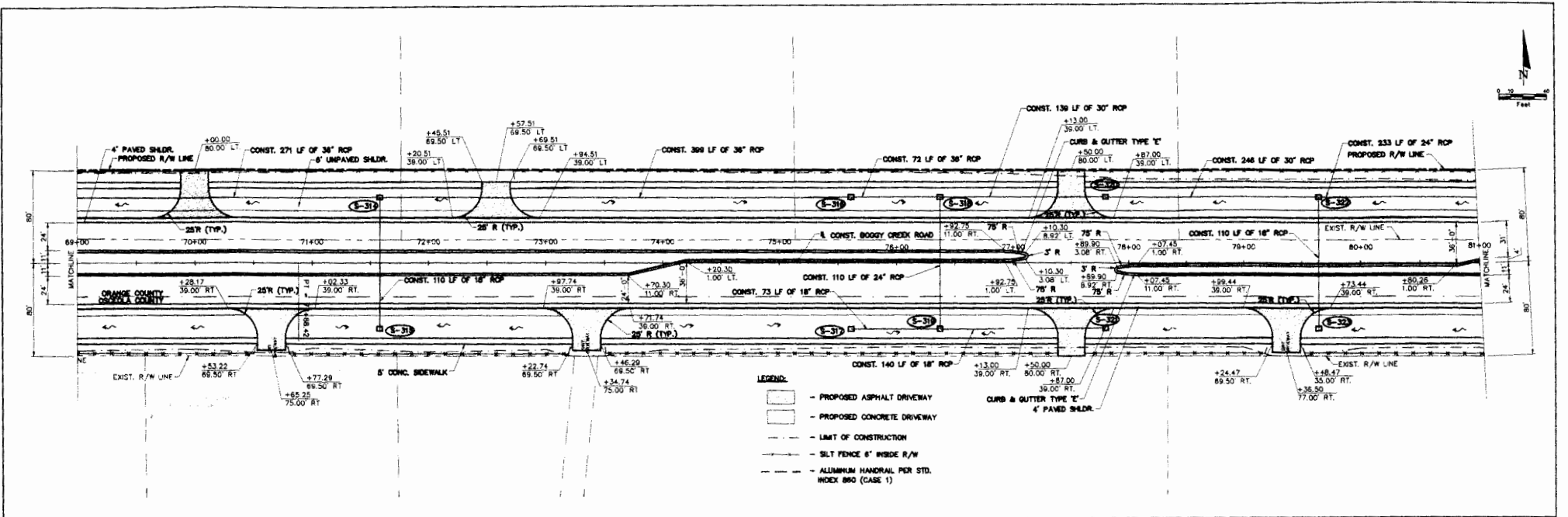


OSCEOLA COUNTY
 ENGINEERING DEPARTMENT
 BOGGY CREEK ROADWAY WIDENING

BOGGY CREEK ROAD
 PLAN AND PROFILE
 STA. 81+00.00 TO STA. 91+51.61

SHEET
 NO.
 28

SCALE: 1" = 40' H.
 1" = 40' V.



| REVISIONS | | | | | |
|-----------|----|-------------|------|----|-------------|
| DATE | BY | DESCRIPTION | DATE | BY | DESCRIPTION |
| | | | | | |
| | | | | | |

Yanase Hagan Brustin, Inc.
 Transportation, Land Development
 Environmental Services
 225 E. Robinson Street, Suite 300
 Orlando, FL 32801 (407) 639-4006
 Certificate of Authorization # 3932
 Mark F. Bertanich, P.E.
 PE # 62437



OSCEOLA COUNTY
 ENGINEERING DEPARTMENT
 BOGGY CREEK ROADWAY WIDENING

BOGGY CREEK ROAD
 PLAN AND PROFILE
 STA. 69+00.00 TO STA. 81+00.00

SHEET NO.
27