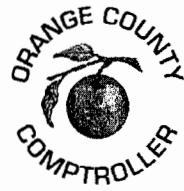


OFFICE OF COMPTROLLER



ORANGE
COUNTY
FLORIDA

Martha O. Haynie, CPA
County Comptroller as
Clerk of the Board of County Commissioners
201 South Rosalind Avenue
Post Office Box 38
Orlando, FL 32802
Telephone: (407) 836-7300
Fax: (407) 836-5359

July 18, 2014

Mr. Francisco Villar, Engineer II
Development Engineering, BCC

Dear Mr. Villar:

Enclosed is the Resolution Granting Petition to Vacate # 14-02-003 with attachments for recording with Official Records.

Petition to Vacate # 14-02-003 was approved by the Board of County Commissioners at its regular meeting of July 8, 2014. After recording the resolution with attachments with Official Records, please send a copy of the recorded document to the applicant, along with the staff noted below:

Rick Singh, Orange County Property Appraiser, c/o Rocco Campanale, Manager Real Estate Services, Property Appraiser's Office
Scott Randolph, Orange County Tax Collector
Jose Torres, Real Estate Management Division, BCC
Kyle Quackenbush, Section Manager, Official Records Department

Sincerely,

Martha O. Haynie, County Comptroller
As Clerk of the Board of County Commissioners

By: 
Deputy Clerk

ks:kh

APPROVED
BY ORANGE COUNTY BOARD
OF COUNTY COMMISSIONERS
JUL 08 2014 NP/KH

RESOLUTION GRANTING PETITION TO VACATE # 14-02-003

WHEREAS, pursuant to procedures adopted by the Board of County Commissioners, a petition was filed with the Board to vacate that certain **portion of a 70 ft wide unopened and unimproved right of way known as Ukelele Avenue, containing approximately 0.36 acres** in Orange County, Florida, as described in attachment.

WHEREAS, notice of a public hearing before the Board of County Commissioners on **July 8, 2014**, was published in the *Orlando Sentinel*, a newspaper of general circulation in Orange County, Florida, one time at least two weeks prior to the date for the hearing; and

WHEREAS, the Board finds that the vacating of the **portion of a 70 ft wide unopened and unimproved right of way known as Ukelele Avenue, containing approximately 0.36 acres** will not operate to the detriment of Orange County or the public.

THEREFORE, BE IT RESOLVED BY THE BOARD OF COUNTY COMMISSIONERS OF ORANGE COUNTY:

The county road, right-of-way, easement, or park described above is vacated as of this date and Orange County renounces any rights in it.

RESOLVED THIS 8TH DAY OF JULY 2014.

BOARD OF COUNTY COMMISSIONERS
ORANGE COUNTY, FLORIDA

By: *Art DeSantis*
County Mayor

ATTEST:
Martha O. Haynie, County Comptroller
As Clerk of the Board of County Commissioners
Orange County, Florida

By: *Jessica Moore*
for Deputy Clerk



kh

Attachments: Legal property description
Proof of publication of the *Orlando Sentinel* regarding the BCC notice of public hearing
Proof of publication of the *Orlando Business Journal* regarding the BCC notice of adoption

Sketch and Description Ukelele Avenue Vacation (Not a Survey)

Legal Description:

A parcel of land being an unimproved 70' Public Right-of-Way between Block's D and E, Waikiki Beach recorded in Plat Book H, Page 86 of the Official Records of Orange County, Florida being more particularly described as follows:

Commencing at the Northwest corner of Lot 1, Block D; Thence N0°07'56"E along the West line of said Block also being the Easterly Right-of-Way line of Pahoehoe Street, a distance of 15.36 feet to a point on the South Right-of-Way line of Ukelele Avenue and the Northeast corner of a Ukelele Park per the aforementioned Plat of Waikiki Beach for the Point of Beginning;

Thence continuing N00°07'56"E along the projection of said Easterly Right-of-Way, a distance of 84.64 feet to the Southwest corner of Lot 7, Block E, and the North Right-of-Way line of the said 70' Right-of-Way of Ukelele Avenue; Thence S89°52'04"E along said North Right-of-Way, a distance of 228.50 feet to the Southeast corner of Lot 7, Block E, Waikiki Beach; Thence S08°49'52"W along said Easterly projection of the Easterly line of Block D & E, a distance of 70.81 feet to a point on the Point of Intersection of the aforementioned projection with the Southerly Right-of-Way line of Ukelele Avenue. Thence N89°52'04"W along said Southerly Right-of-Way line, a distance of 203.15 feet to a Point of a Non-Tangent Curve; Thence along the arc of a curve concave to the Northwest having a Radial Bearing of N59°52'04"W, a radius of 40.00 feet, a arc distance of 20.94' feet, through a delta of 30°00'00", a chord bearing of S45°07'56"W, a chord distance of 20.71 feet to the Point of Beginning.

Containing 15,746 square feet or 0.36 acres more or less.

Surveyor's Notes:

1. This is not a Boundary Survey.
2. All bearings shown hereon are based on an assumed bearing of N89°52'04"W, for the North line of Lot 1, Block D, Waikiki Beach
3. No improvements were located, if any.

Surveyor's Certification:

I hereby certify that the "Sketch and Description" represented hereon meets the Minimum Technical Standards for Land Surveys in accordance with Chapter 5J-17 of the Florida Administrative Code .

Billy R. Davis, Jr.

Billy R. Davis, Jr., PSM State of Florida
Professional Surveyor and Mapper #5099
Certificate of Authorization No. LB #7761
Phone: 405-464-2414

The survey map and report or the copies thereof are not valid without the signature and the original raised seal of a Florida Licensed Surveyor and Mapper

RESIDENTIAL

1700 South Broadway, Bldg E
Moore, Oklahoma 73160
Office: 405.378.5800 - Fax: 405.703.1851
Toll Free: 888.457.7878

Exhibit of Vacation for Ukulele Avenue

Drawn By: RLJ

Approved: BRD

Sheet

Date: April 4, 2014

Surveyors Reference #: 14-01-0259

1 of 2

ok
All 4/14/14

Sketch and Description Ukelele Avenue Vacation

(Not a Survey) Lot 7, Block E,
Waikiki Beach
Plat Book H, Page 86

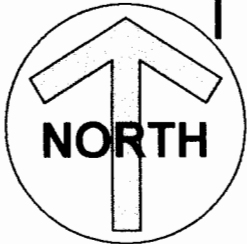
C1
 $\Delta=30^{\circ}00'00''$ (C)
 $R=40.00'$ (P)
 $L=20.94'$ (C)
 $C=20.71'$ (C)
 $CB=S45^{\circ}07'56''W$ (C)
 $RB=N59^{\circ}52'04''W$ (C)

$N00^{\circ}07'56''E$ (M)
 84.64' (M)

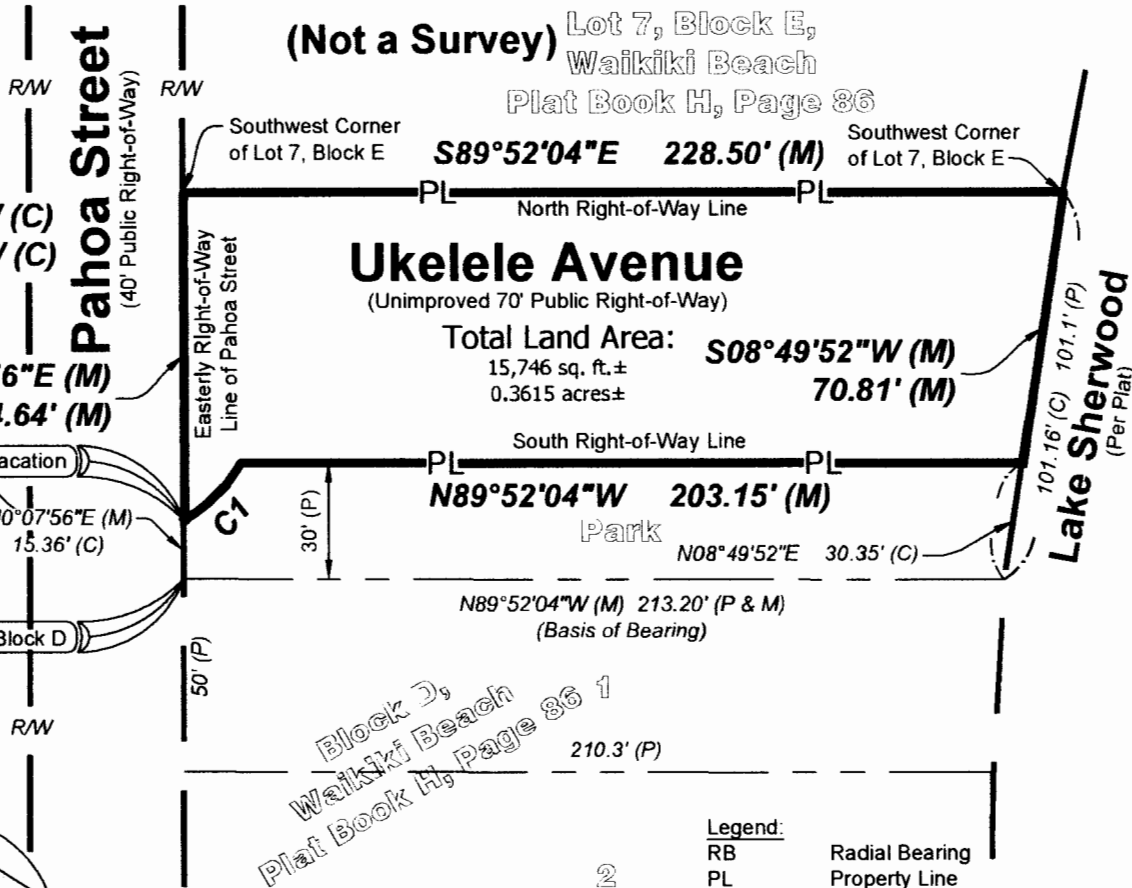
POB: Right-of-Way Vacation

$N0^{\circ}07'56''E$ (M)
 15.36' (C)

POC: Northwest Corner of Block D



0 50 100
 1 INCH = 50 FT.



Ukelele Avenue
 (Unimproved 70' Public Right-of-Way)

Total Land Area: $S08^{\circ}49'52''W$ (M)
 15,746 sq. ft. ± $70.81'$ (M)
 0.3615 acres ±

South Right-of-Way Line
 $N89^{\circ}52'04''W$ 203.15' (M)

$N89^{\circ}52'04''W$ (M) 213.20' (P & M)
 (Basis of Bearing)

Block D,
 Waikiki Beach
 Plat Book H, Page 86 1

Legend:

RB	Radial Bearing
PL	Property Line
POC	Point of Commencement
POB	Point of Beginning
R/W	Right-of-Way
(M)	Measure
(C)	Calculated
(P)	Plat

Basis of Bearing:
 All bearings shown hereon are based on an assumed bearing of $N89^{\circ}52'04''W$, for the North line of Lot 1, Block D, Waikiki Beach

RESIDENTIAL

1700 South Broadway, Bldg E
 Moore, Oklahoma 73160
 Office: 405.378.5800 - Fax: 405.703.1851
 Toll Free: 888.457.7878

Exhibit of Vacation for Ukulele Avenue

Drawn By: RLJ

Approved: BRD

Sheet

Date: March 17, 2014

Surveyors Reference #: 14-01-0259

2 of 2

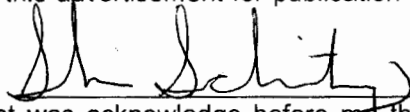
Orlando Sentinel

Published Daily

State of Florida }
COUNTY OF ORANGE } S.S.

Before the undersigned authority personally appeared Sheri Schmitz, who on oath says that he/she is the Advertising Representative of the Orlando Sentinel, a daily newspaper published at **Orlando** in **Orange** County, Florida; that the attached copy of advertisement, being a **Public Hearing** in the **Petition to Vacate #14-02-003** in **Orange** County was published in said newspaper in the issue; of **06/15/14**

Affiant further says that the said Orlando Sentinel is a newspaper published at **Orlando** in said **Orange** County, Florida, and that the said newspaper has heretofore been continuously published in said **Orange** County, Florida, daily and has been entered as second-class mail matter at the post office in **Orlando** in said **Orange** County, Florida, for a period of one year next preceding the first publication of the attached copy of advertisement; and affiant further says that he/she has neither paid nor promised any person, firm or corporation any discount, rebate, commission or refund for the purpose of securing this advertisement for publication in the said newspaper.



The foregoing instrument was acknowledge before me this **17** day of **June, 2014**, by Sheri Schmitz, who is personally known to me and who did take an oath.



Order #2451411

ORANGE COUNTY NOTICE OF PUBLIC HEARING PETITION TO VACATE # 14-02-003

The Orange County Board of County Commissioners will conduct a public hearing on July 8, 2014, at 2 p.m., or as soon thereafter as possible, in the County Commission Chambers, First Floor, County Administration Center, 201 South Rosalind Avenue, Orlando, Florida. You are invited to attend and be heard regarding a request by:

Applicant: Eric Papelini
Consideration: Resolution granting Petition to Vacate # 14-02-003, vacating a portion of a 70 ft wide unopened and unimproved right of way known as Ukaelele Avenue, containing approximately 0.36 acres
Location: District 6; property located at 803 Paha Street; S22/T22/R28; Orange County, Florida (legal property description on file)

You may obtain a copy of the legal property description by calling the Comptroller Clerk of the Board of County Commissioners, 407-836-7300; or pick one up at 201 South Rosalind Avenue, Fourth Floor, Orlando, Florida.

This petition to vacate is complete and has been reviewed and investigated by appropriate County staff. The County Mayor, acting on behalf of the Board of County Commissioners pursuant to Resolution No. 91-M-62, has considered this petition and finds it acceptable for consideration at a public hearing.

IF YOU HAVE ANY QUESTIONS REGARDING THIS NOTICE, CONTACT THE ORANGE COUNTY DEVELOPMENT ENGINEERING DIVISION, FRANCISCO VILLAR, 407-836-7921, Email: francisco.villar@ocfl.net

PARA MÁS INFORMACIÓN REFERENTE A ESTA VISTA PÚBLICA, FAVOR DE COMUNICARSE CON LA DIVISION DE INGENIERIA DE DESARROLLOS (DEVELOPMENT ENGINEERING DIVISION) AL NUMERO 407-836-7921.

If you wish to appeal any decision made by the Board of County Commissioners at this meeting you will need a record of the proceedings. You should ensure that a verbatim record of the proceedings is made, which record includes the testimony and evidence upon which the appeal is to be based.

If you require special accommodations under the Americans with Disabilities Act of 1990, please call 407-836-5631 no later than two business days prior to the hearing for assistance. Si usted requiere ayuda especial bajo la ley de Americanos con Incapacidades de 1990, por favor llame al 407-836-3111.

Martha O. Haynie, County Comptroller
As Clerk of the Board of
County Commissioners
Orange County, Florida

ORG2451411

06/15/14

Orlando Business Journal

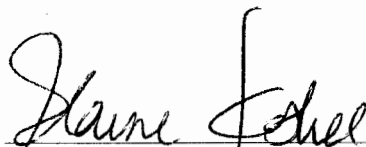
Published Weekly
Orlando, Orange County, Florida

STATE OF FLORIDA
COUNTIES OF ORANGE, SEMINOLE, OSCEOLA, LAKE,
VOLUSIA & BREVARD


Before the undersigned authority personally appeared Elaine Koshel, who states that she is Classified Manager of Orlando Business Journal, a weekly newspaper published at Orlando in Orange, Seminole, Osceola, Lake, Volusia and Brevard Counties, Florida; that the attached copy of advertisement, being a Notice of Adoption in the matter of Petition to Vacate # 14-02-003, was published in said newspaper in the issue of July 18, 2014.

Affiant further says that the said Orlando Business Journal is a newspaper published at Orlando in said Orange, Seminole, Osceola, Lake, Volusia and Brevard Counties, Florida, and that the said newspaper has heretofore been continuously published in said Orange, Seminole, Osceola, Lake, Volusia and Brevard Counties, Florida each week and has been entered as second-class mail matter at the post office in Orlando, in said Orange County, Florida for a period of one year next preceding the first publication of the attached copy of advertisement; and affiant further says that she has neither paid nor promised any person, firm or corporation any discount, rebate, commission or refund for the purpose of securing this advertisement for publication in the said newspaper.

Sworn to and subscribed before me this 18th day of July, 2014 by Elaine Koshel who is personally known to me.



Elaine Koshel, Classified Manager



Marti McKeown, Notary



MARTHA D. MCKEOWN
MY COMMISSION # FF 004507
EXPIRES: August 3, 2017
Bonded Thru Budget Notary Services

NOTICE OF ADOPTION
PETITION TO VACATE # 14-02-003
WHEREAS, pursuant to procedures adopted by the Board of County Commissioners, a petition was filed with the Board to vacate that certain portion of a 70 ft wide unopened and unimproved right of way known as Ukelele Avenue, containing approximately 0.36 acres in Orange County, Florida (the legal property description is on file in the office of the Comptroller Clerk of the Board of County Commissioners).

WHEREAS, notice of a public hearing before the Board of County Commissioners on July 8, 2014, was published in the Orlando Sentinel, a newspaper of general circulation in Orange County, Florida, one time at least two weeks prior to the date for the hearing; and

WHEREAS, the Board finds that the vacating of that certain portion of a 70 ft wide unopened and unimproved right of way known as Ukelele Avenue, containing approximately 0.36 acres will not operate to the detriment of Orange County or the public.

THEREFORE, BE IT RESOLVED BY THE BOARD OF COUNTY COMMISSIONERS OF ORANGE COUNTY: The county road, right-of-way, easement, or park described above is vacated as of this date and Orange County renounces any rights in it.

RESOLVED THIS 8TH DAY OF JULY 2014.

Martha O. Haynie, County
Comptroller
As Clerk of the Board of County
Commissioners
Orange County, Florida
July 18, 2014