

AA/SP/CS

RESOLUTION NO. 95-M-08

A RESOLUTION ESTABLISHING DESIGNATED TOW-AWAY
ZONE(S) IN UNINCORPORATED ORANGE COUNTY,
FLORIDA; AND PROVIDING FOR AN EFFECTIVE DATE.

BE IT RESOLVED BY THE BOARD OF COUNTY COMMISSIONERS OF ORANGE
COUNTY:

Section 1. Pursuant to Orange County Code, Chapter 35,
Traffic, Article II, Administration and Enforcement, the County
Traffic Engineer has recommended to the Board of County
Commissioners that designated tow-away zones be established at the
following location(s):

On both sides of the streets and in the median areas
along International Drive from Orlando city limits
south to Sea Harbor Drive; along Republic Drive from
Orlando city limits south to International Drive; and
along Canadian Court from International Drive,
proceeding east 1075 feet to the end of the Orange
County Convention Center parking garage complex.

Section 2. The Board of County Commissioners hereby adopts
the County Traffic Engineer's recommendation and establishes the
location(s) described in Section I above as a designated tow-away
zones(s).

Section 3. The designated tow-away zone(s) herein
established shall be marked with signs and administered and
enforced pursuant to Orange County Code, Chapter 35, Article II.

Section 4. Effective Date. This Resolution shall take
effect immediately upon its adoption.

ADOPTED THIS 7th DAY OF February, 1995.

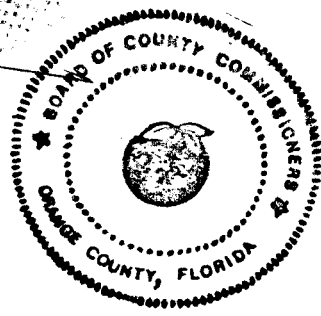
ORANGE COUNTY, FLORIDA

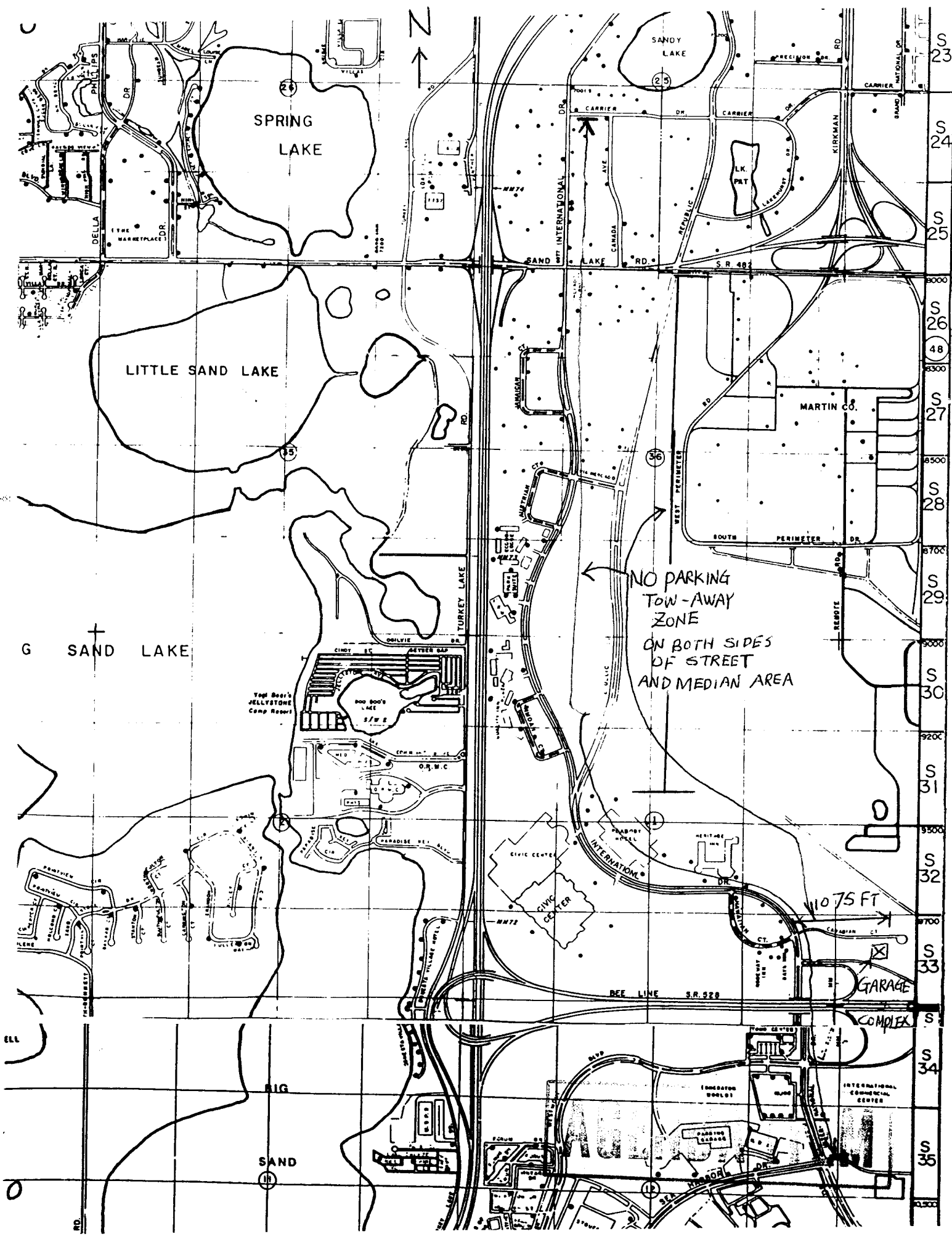
BY: [Signature] Bob Freeman
FOR THE County Chairman

DATE: FEB 07 1995

ATTEST: Martha O. Haynie, County Comptroller
As Clerk of the Board of County Commissioners

BY: [Signature]
Deputy Clerk





SPRING LAKE

LITTLE SAND LAKE

SAND LAKE

NO PARKING
TOW-AWAY
ZONE
ON BOTH SIDES
OF STREET
AND MEDIAN AREA

GARAGE

COMPLEX

INTERNATIONAL

INTERNATIONAL COMMERCIAL CENTER

Topi Bear's JELLYSTONE Camp Resort

POO BOO'S LAKE

CIVIC CENTER

CIVIC CENTER

11075 FT

REF. LINE S.R. 928

S 23
S 24
S 25
S 26
S 27
S 28
S 29
S 30
S 31
S 32
S 33
S 34
S 35

C

ELL

RIG

SAND



Orange



County

Orlando, Florida

Interoffice Memo

RECEIVED

JAN - 9 1995

SERVICE COUNTY
TRAFFIC ENGINEERING DEPT.

January 4, 1995

MEMORANDUM

TO: Steve Wilmarth, Acting Manager/Traffic Engineering
FROM: Sanh Bui, Operations Manager/OCCC *S. Bui*
SUBJECT: CANADIAN COURT PARKING GARAGE

As you know, the Convention Center is responsible for the Parking Garage located on Canadian Court and International Drive.

During the past several events held at the Convention Center, where the parking garage was being utilized, vehicles were parked along the access road to the garage (Canadian Court). This practice greatly inhibits safe entrance/exit to the garage.

I am requesting Traffic Engineering to install "NO PARKING" signs along Canadian Court from International Drive to the east end of the access road to the parking garage. *get distance*

Due to the impending use of the parking garage during PGA, (30,000 plus attendees) this must be completed no later than 1/20/95.

I appreciate your immediate attention to this request. Should you need additional information or have any questions, please do not hesitate to call me at 345-9863.

SNB:slr

c: Jessie Allen, Deputy Director
Fred Blankenship, Ass't Bldg Security Supv
David White, Traffic Coord.



AGENDA ITEM