

OCT 12 1993

A RESOLUTION ESTABLISHING A MAXIMUM SPEED LIMIT OF 25 MILES PER HOUR FOR THE RESIDENTIAL DISTRICT KNOWN AS River Park Phase I and River Park Phase II Subdivisions.

WHEREAS, Section 316.189 and Section 316.183, Florida Statutes, as amended by Chapter 88-47, Laws of Florida, authorizes a county to set a maximum speed limit of 25 miles per hour for a residential district after an investigation determines that such a limit is reasonable; and

WHEREAS, Orange County has determined after an investigation that the maximum speed limit should be 25 miles per hour for the residential district known as River Park Phase I and River Park Phase II Subdivisions.

NOW, THEREFORE, BE IT HEREBY RESOLVED BY THE BOARD OF COUNTY COMMISSIONERS OF ORANGE COUNTY, FLORIDA:

1. The maximum speed limit shall be 25 miles per hour for all streets located within the residential district known as River Park Phase I and River Park Phase II Subdivisions.

2. This Resolution shall become effective upon the date of its adoption.

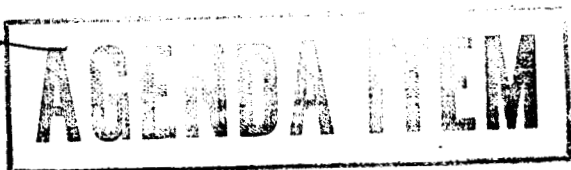
ADOPTED THIS 12TH DAY OF OCTOBER, 1993.

ORANGE COUNTY, FLORIDA

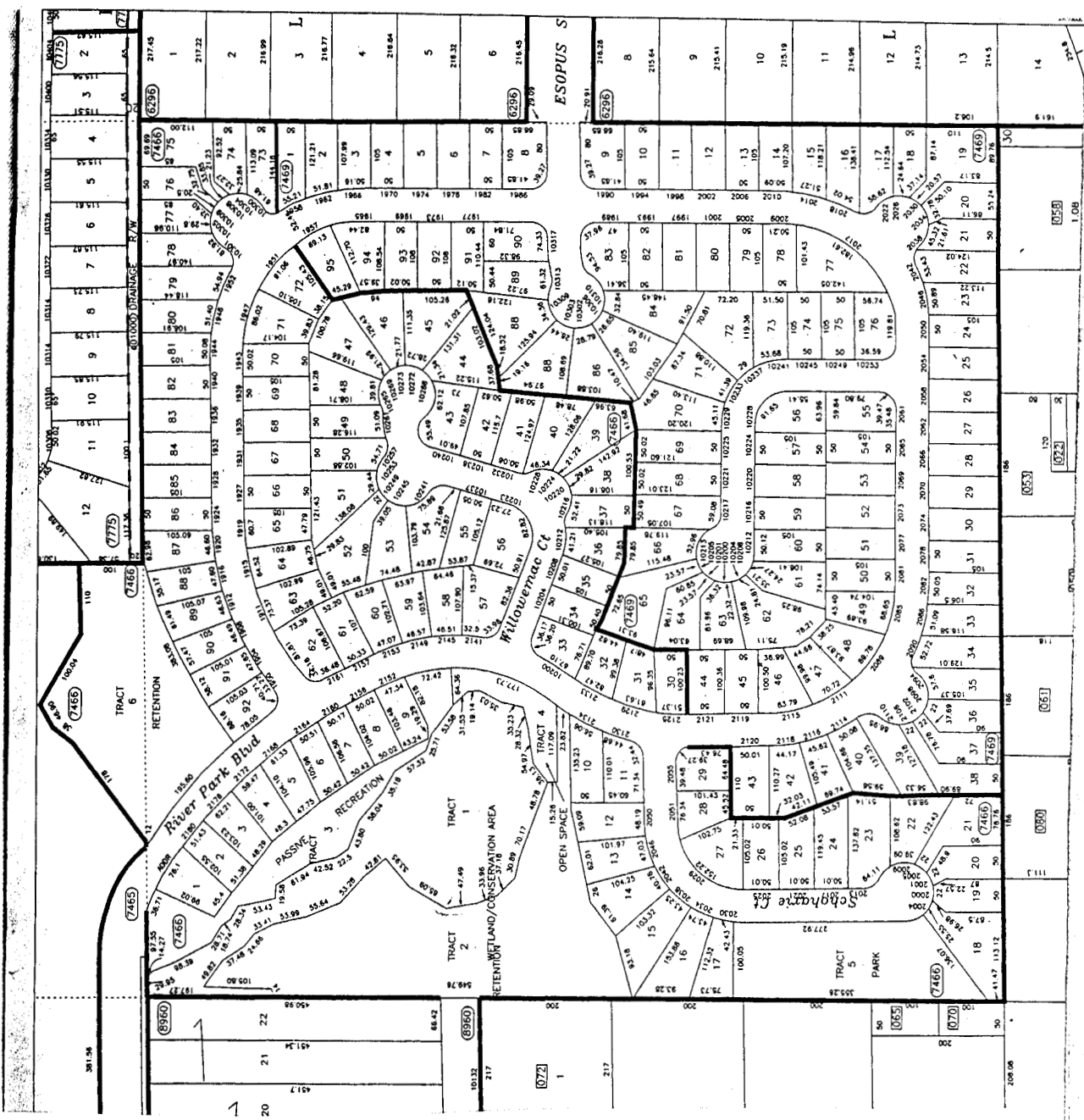
BY: [Signature]  
Chairman, Board of County Commissioners

ATTEST: MARTHA O. HAYNIE, Clerk,  
Board of County Commissioners

BY: [Signature]  
Deputy Clerk



AN



SUBDIVISION INDEX

NO	NAME	BOOK/PAGE	NOTES
2339	EAST ORLANDO MEDICAL CONDO	3919/1777	[CONDO]
2800	FLOWERS MANOR	R/131	
6296	ORLANDO ACRES 1ST ADD	S/71	
6308	ORLANDO ACRES BUSINESS SECTION	T/72	
7400	RICHLAND REPLAT	S/125	
7466	RIVER PARK PHASE 1	28/107 (EY 92)	
7469	RIVER PARK PHASE II	28/148	
7775	ROYAL ESTATES SEC 2	X/119	
8829	UNION PARK PROFESSIONAL CENTER	3586/2865	[CONDO]
8960	WALKER-DEAN UNIT 2	V/19	

**AGENDA ITEM**

